



**KAUFFMAN**  
AND ASSOCIATES INCORPORATED

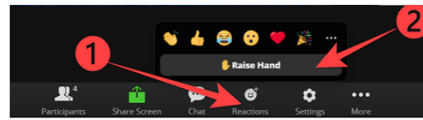
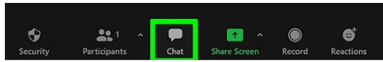
*We Do Work That Matters*

## **PN25 Behavioral Health Strategic Plan Advisory Committee Meeting**

February 16, 2023  
1–3 p.m. PST

## Housekeeping Items

- Meeting is being recorded and will be available on TVW
- You may choose to turn your camera on
- We kindly request that all members place an '-M' after your name (e.g., Name - M)
- All mics have been muted
- Two-hour session
- Questions can be typed into the chat box, or you may select the raised hand icon to be called upon by the facilitator



- There is time for public comment at the end of this session



## Agenda


<b>1:05 – 1:10</b>	<b>WELCOME</b>
<b>1:10 – 1:15</b>	Norms
<b>1:15 – 1:30</b>	Project Update
<b>1:30 – 1:45</b>	Steering Committee Proposal
<b>1:45 – 2</b>	Subcommittees
<b>2 – 2:10</b>	Break
<b>2:10 – 2:25</b>	Behavioral Health Care Continuum
<b>2:25 – 2:40</b>	Qualitative Behavioral Health Landscape Analysis Process: Focus Groups
<b>2:40 – 2:55</b>	Public Comments
<b>2:55 – 3</b>	(Optional) Survey

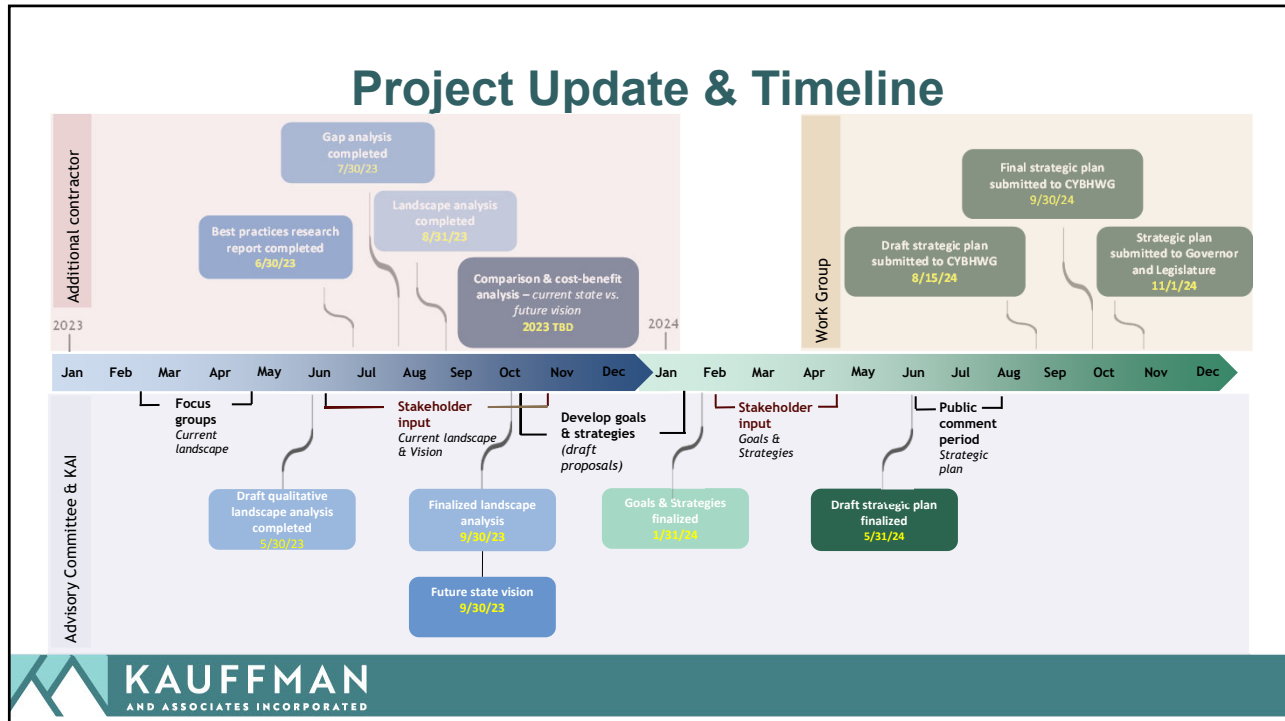




## Norms

- Be respectful
- Speak truth
- Brave space
- Use plain language
- Use first names
- Stories stay private, lessons carry forward
- Step up and step back
- Be mindful of trauma/recognize the impact of trauma
- Assume that everybody's doing the best they can in the moment
- Your experience matters
- Encourage grace, compassion, kindness for self





## Steering Committee

### What is a steering committee?

- A steering committee sets the agenda for a committee, such as the advisory committee meetings.
- Steering committees are typically small, so they can make rapid decisions.
- Currently, the work group co-chairs, Lisa Callan and Keri Waterland approve the agendas for these meetings.

A steering committee would give parents/caregivers and young people a voice in setting the agenda for the advisory committee and its work.

### Proposal:

- Establish a steering committee (by voting)
- For now, add 2 member positions – a parent/caregiver and a young person – with the option of adding additional steering committee members in the future
- Members interested in joining the steering committee will send an e-mail to [cybhwg@hca.wa.gov](mailto:cybhwg@hca.wa.gov) sharing why they are interested in the position and what they would bring to it
- All information received will be sent to the advisory committee for voting
- Members will vote on the positions at the next meeting

## Subcommittees

- Decisions by the Advisory Committee are informed by the work done in standing and ad hoc subcommittees.
- Examples of Potential Standing Subcommittees:
  - Stakeholder and Community Engagement
  - Data Management
  - Parents/Caregivers/Family Support Systems
  - Youth



## Proposal - Subcommittees

- Establish a standing Stakeholder/Community Engagement Subcommittee
  - Responsible for developing a stakeholder/community engagement plan to inform the development of the landscape analysis, vision for the future and strategic goals and objectives
  - Oversee the implementation of the stakeholder/community engagement plan
  - Meet virtually on a monthly basis

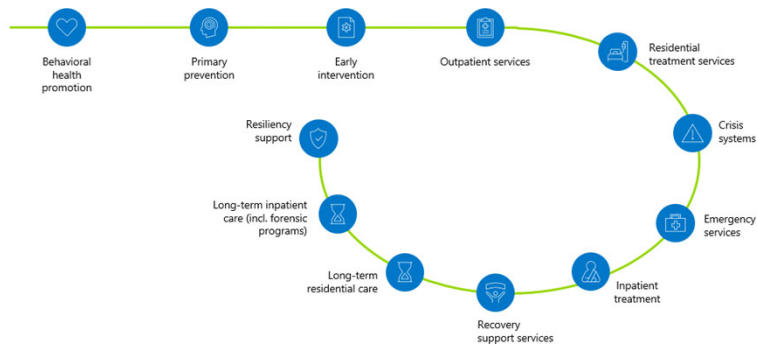




**BREAK**  
10 minutes

## Current Behavioral Health Care Continuum in Washington State

### The continuum of behavioral health care



Source: McKinsey Health Institute, as adapted by WA HCA; interviews conducted with WA DCYF, DOH, DSHS, and HCA in September 2022.

## Behavioral Health Landscape Analysis

- Landscape Analysis – what does the behavioral health system look like and function like today?
  - Qualitative Analysis (KAI) – Interviews and advisory committee input, stakeholder engagement
  - Quantitative Analysis (Contractor TBD) – Current data structure and analysis



## Qualitative Behavioral Health Landscape Process: Focus Groups

### Process

- Four virtual groups will be held: two parents, one youth (25 and under), and one provider.
- 90 minutes over recorded Zoom sessions.
  - Recording is for notetaking and analysis purposes only. The recording will be deleted.
- Focus groups will be scheduled in March 2023.
- Questions will focus on lived experience, what are the gaps in the system, and what could make peoples' experiences and outcomes better?



# Public Comments



## 2023 Advisory Committee Meetings

DATES	TOPIC(S)	TIME
<b>March 13</b>	<ul style="list-style-type: none"> <li>Finalize charter</li> <li>Committee development</li> <li>Stakeholder engagement strategy</li> <li>Behavioral health landscape analysis - quantitative</li> </ul>	3 – 5 pm PST
<b>May 4</b>	<ul style="list-style-type: none"> <li>Initiate discussion around a shared vision for PN-25 behavioral health services</li> <li>Identify obstacles, barriers, challenges preventing our future vision</li> </ul>	3 – 5 pm PST
<b>July 6</b>	<ul style="list-style-type: none"> <li>Identify obstacles, barriers, challenges preventing our future vision</li> </ul>	3 – 5 pm PST
<b>September 7</b>	<ul style="list-style-type: none"> <li>Develop strategic directions, goals and objectives that will address the root causes of the obstacles, barriers and challenges</li> </ul>	3 – 5 pm PST
<b>November 2</b>	<ul style="list-style-type: none"> <li>Develop strategic directions, goals and objectives that will address the root causes of the obstacles, barriers and challenges</li> </ul>	3 – 5 pm PST



Information is open to feedback and may change.





## Survey

- Optional
- Two questions
- Link to the survey can be found in the chat box. The survey platform is Survey Monkey.
- If you cannot complete the survey now, it will be open until end of the day today to complete.
- Thank you in advance for your time! We greatly appreciate your feedback!

