

RECOVERY NAVIGATOR PROGRAM

SUSAN PEACEY, KING ASO RNP ADMINISTRATOR

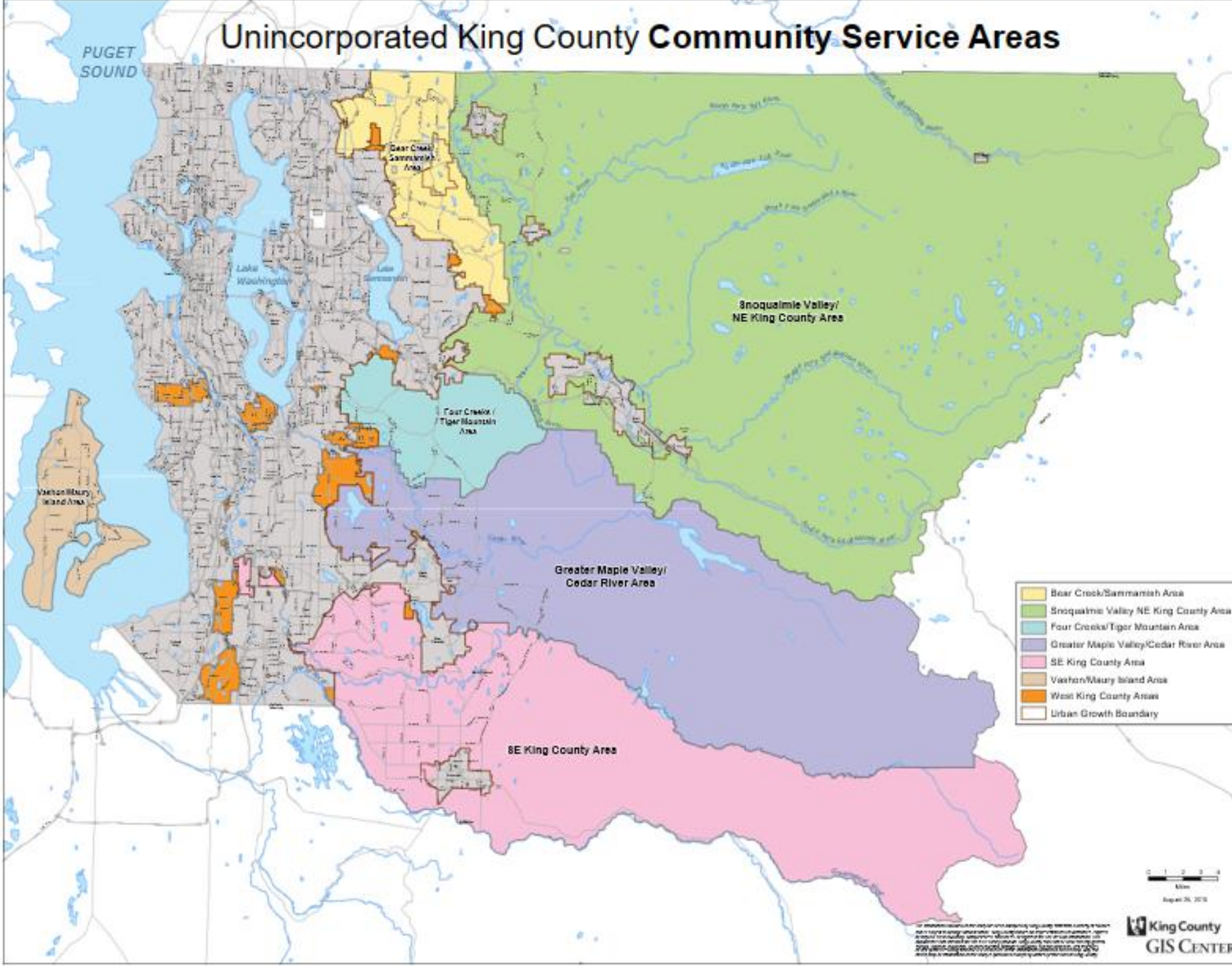
OUR COMMUNITY PARTNERS:

PEER WASHINGTON -RNP

COMMUNITY PASSAGEWAYS - RNP

REACH - RNP

Unincorporated King County Community Service Areas



Recovery Navigator Program (RNP)



- The Recovery Navigator Program (RNP) is a statewide peer support effort, in partnership with Behavioral Health Administrative Organizations (BHASOs), to provide community-based outreach, intake, assessment, and connection to services. These services support individuals with substance use disorder (SUD), including individuals with co-occurring substance use disorders and mental health conditions
- Coordination and communication between regional RNP staff, law enforcement, prosecutors, medical providers, and community partners is essential to the success of each individual.



Misdemeanor Time and Costs

National Averages:

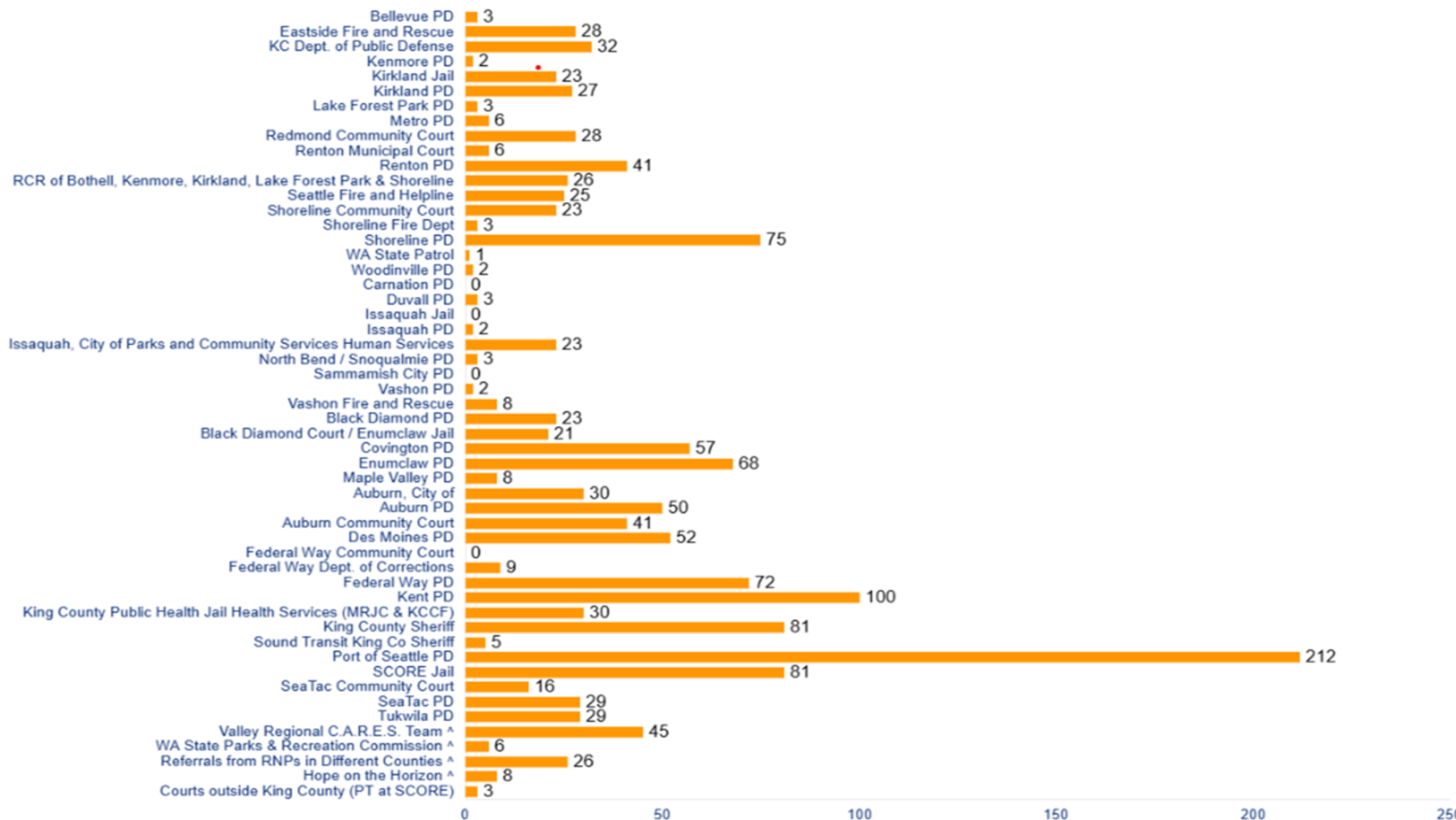
Average court costs for being arrested: **\$13,607** per person.

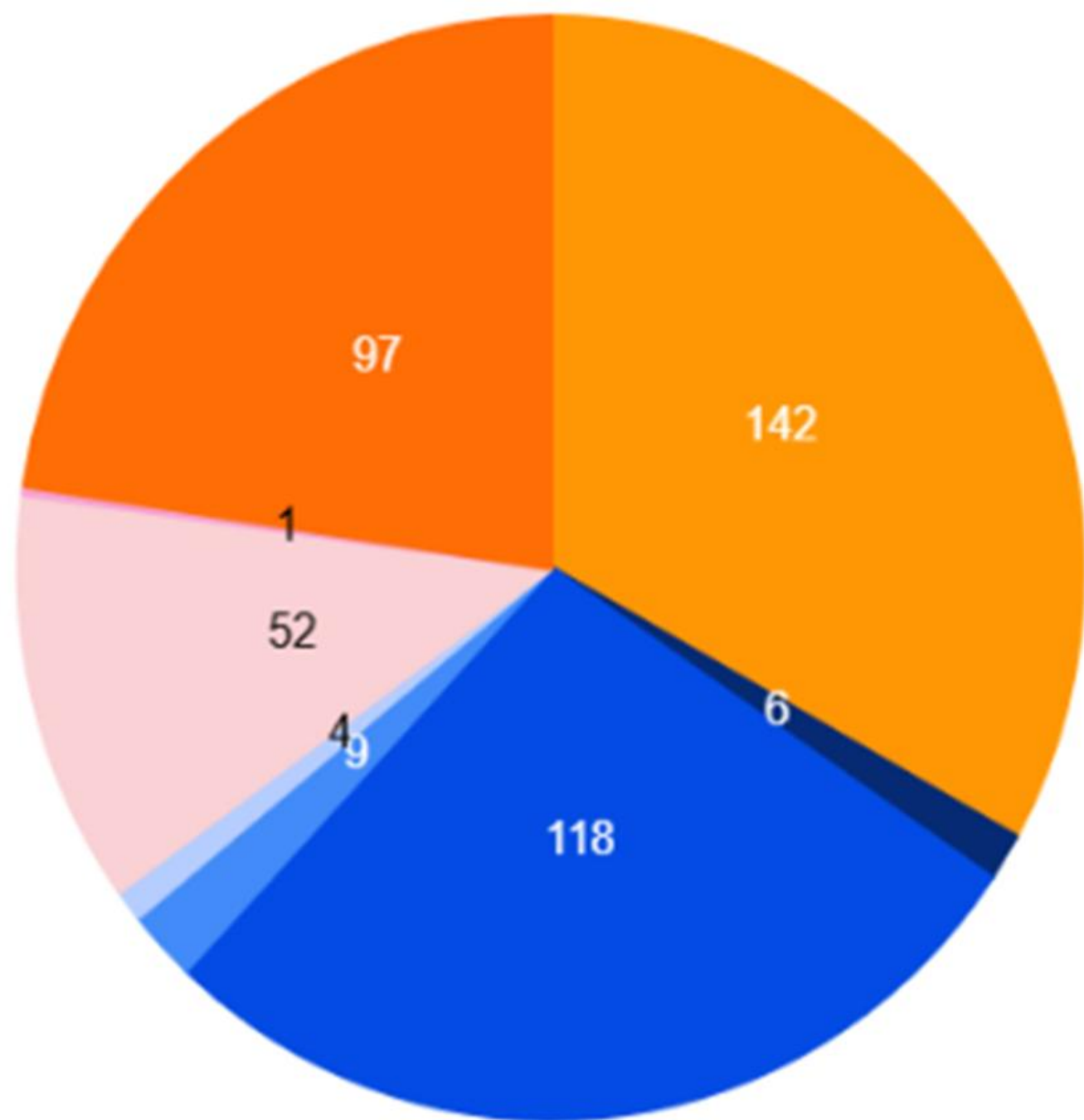
Average annual governmental costs of corrections/criminal justice system: **\$134,400** per person detained.

Recovery Navigator has saved an estimated \$8.1 M since start-up in June 2022 through September 2024.

- (based on [waspc.org](https://www.waspc.org) annual jail statistics 2023)

Cumulative Referrals by Source





- ABHS
- Fairfax Behavioral Health
- Recovery Place (Valley Cities)
- SeaMar Tacoma
- SeaMar Turning Point (Seattle)
- South Sound Behavioral Hospital
- Triumph (JOTC)
- Other Facility

Referrals, Locations, and Hours of Operation

Referrals@recoverynavigatorprogram.org

1-800-767-5604

North location:

1520 Bellevue Ave Suite 200 Seattle, WA 98122

South location:

34709 9th Ave S. Suite 200 Federal Way, WA 98003

Currently open 9am to midnight 365 days a year

Community Passageways: Who we are





Recovery Navigator Program: Why RNP matters

Individuals served across Seattle, Burien, and North Highline.

“Estimated \$332,100 saved by diverting 90 participants from jail time.”

Public Safety and Future Vision



Success Story

Marcus' Story: From Repeated Arrests to Community Leadership

Success Story: Marcus

Background:

Marcus grew up in a rough neighborhood, surrounded by **substance abuse** and **violence**. By the time he was in his late teens, he had already been arrested multiple times. **Jail felt like his only option**, and he didn't see a way out.

► How RNP Helped:

When Marcus was at his lowest, an RNP navigator reached out to him—not with judgment, but with **empathy**. Instead of leaving him to navigate the system alone, we connected him to **housing**, **mental health counseling**, and a **job training program** that gave him a sense of purpose.

RECOVERY NAVIGATOR PROGRAM

SINCE JUNE 2022



Evergreen
Treatment
Services

CLINIC SERVICES

REACH



RNP Stabilizes people by meeting FOUNDATIONAL NEEDS

Over 9,100 Encounters by RNP staff

REACH RNP primarily serves **Burien, South Seattle, & West Seattle**.

Over 150 clients currently in care management

Almost **40% of clients served are Black & African American**, and 66% are BIPOC.

More than 300 clients met basic needs, like food and hygiene.

More than 230 clients met financial milestones, connecting to benefits & employment.



RNP Connects people to HEALTHCARE

RNP-funded **Psychiatrist** served almost **230 clients**

More than 250 clients met behavioral health treatment goals

Goals include:

- Recovery support
- Mental Health & SUD Treatment
- Overdose prevention
- Linkage to MOUD



RNP Opens the door to HOUSING

Over 30 clients housed

Over 300 clients met housing goals

Goals include:

- Permanent housing
- Shelter/temporary accommodations
- Housing system navigation
- Stability and safety



RNP is an essential PUBLIC SAFETY program

More than 170 Police Referrals to RNP, resulting in diversion to community-based care

More than 100 clients achieved legal goals

Addressing **basic & legal needs in community** reduces arrests and improves public safety while fostering autonomy & accountability.

**2,000 INDIVIDUALS
SERVED** at REACH with
RNP funding



LET'S CONNECT

CHLOE GALE

VP of Policy & Advocacy
206-715-6483
chloeg@etsreach.org

BRANDE FLOOD

Director of Community Justice
206-678-5183
brandief@etsreach.org

MICHELLE CONLEY

Director of Integrated Care
206-482-3071
michellec@etsreach.org

PAGE KILLINGER

REACH LEAD Supervisor
206-715-7566
paigek@etsreach.org



REACH'S RNP IMPACT

RNP funds REACH's expansion into Rainier Valley and
utilizing pre-booking diversion as an essential public s
people stabilize in collaboration with legal system parti
14 essential full-time positions including REACH's stre
helping individuals with complex behavioral health r
resolve legal cases and transition to long-term h

...

In 2023, RNP funded the opening of our Rain

In 2024, there were 1,300 client visits to REACH's Rainier Office O

office identify as BIPOC

Our Rainier Office is staffed by 12 REACH Care

Photo: Seattle Councilmember Mark Solomon's visit to our Rainier Office

RECOVERY NAVIGATOR PROGRAM

Questions / Comments

Thank you

Susan Peacey

King ASO Recovery Navigator Program SUD Regional Administrator

King County – BHRD

speacey@kingcounty.gov