



# Medicaid Transformation Demonstration

Foundational Community Supports Program

March 10, 2017

# Before we get started, let's make sure we are all connected

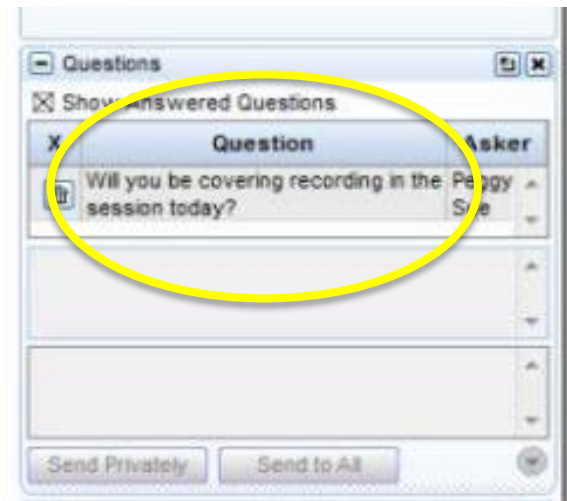
## Audio options

- Mic & Speakers
- Telephone: Use your phone to dial the number in the “Audio” section of the webinar panel. When prompted, enter your access code and audio pin.



## Have questions?

Please use the “Questions” section in the webinar panel to submit any questions or concerns you may have. Our panelists will answer questions at the end of the presentation.





# Today's speakers

- Nathan Johnson, Chief Policy Officer, HCA
- MaryAnne Lindeblad, Medicaid Director, HCA
- Jon Brumbach, Senior Health Policy Analyst, HCA Division of Policy, Planning & Performance
- Craig Dublanco, CEO, Coast Community Action Program
- Melodie Pazolt, Recovery Support Services Supervisor, Division of Behavioral Health and Recovery, DSHS



# Today's agenda

- Demonstration update
  - Listening forums
  - Timeline
  - Initiative 1 – Transformation Through Accountable Communities of Health
  - Initiative 2 – Long-term Services and Supports
- Initiative 3 - Foundational Community Supports
  - Service array update
  - Administrative approach: third party administrator
- Questions & answers

# Demonstration Update



# Listening forums

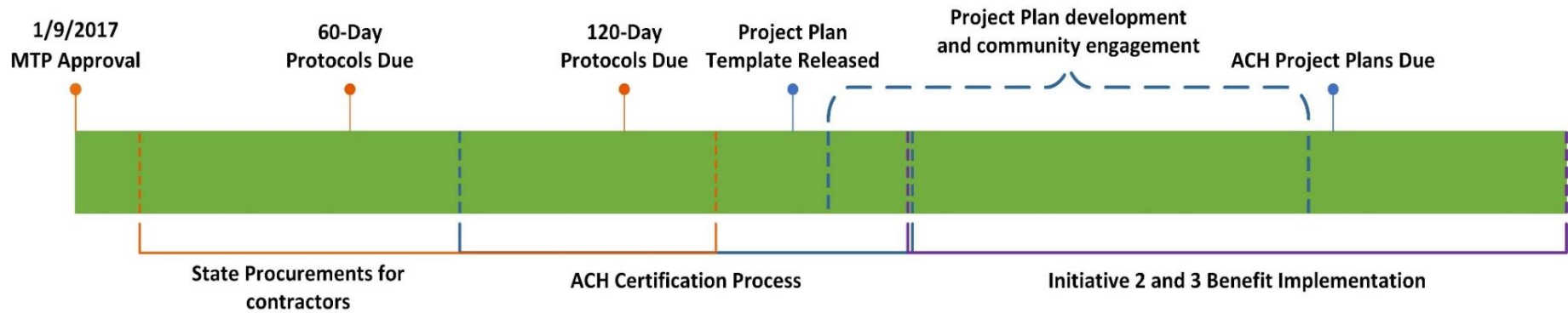
## Final two forums

- Saturday, March 11: United Way of Benton & Franklin Counties, Kennewick
- Sunday, March 12, The Philanthropy Center, Spokane
- Register online at [www.hca.wa.gov/hw](http://www.hca.wa.gov/hw)

## Demonstration-wide webinar

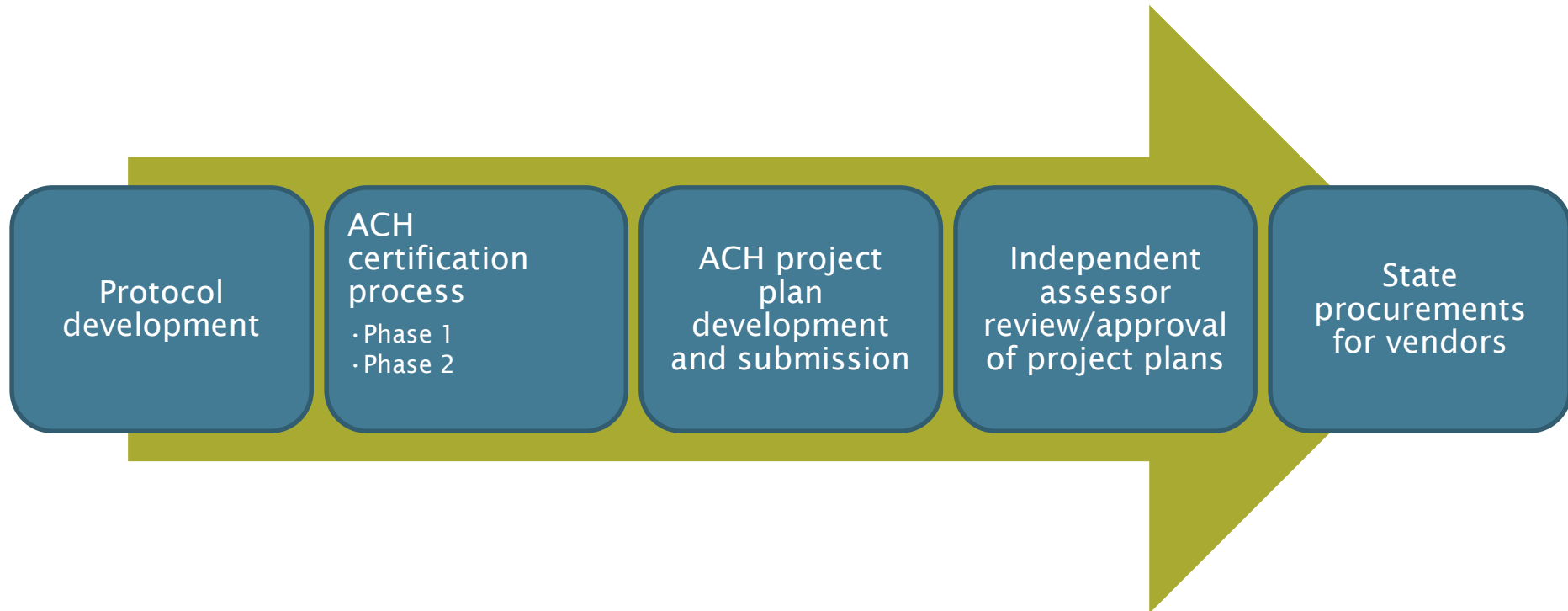
- March 28, registration link available soon

# Implementation timeline





# Initiative 1 implementation Transformation through ACHs







## Initiative 2 implementation: Long-term Services & Supports



### Current

- Preparing eligibility, assessment, and payment systems

### March 2017

- Financial WAC public comment

### April 2017

- Develop client materials

### May 2017

- Program WAC public comment

**Implementation target July 1, 2017**

## Foundational Community Supports (FCS)



# Foundational Community Supports



## What it is

- Targeted Medicaid benefits that help eligible clients with complex health needs obtain and maintain housing and employment stability.
- Supportive Housing services
- Supported Employment services

## What it isn't

- Ongoing payments for housing, rent, or room & board costs
- Wages or wage enhancements for clients
- Entitlement



## Special terms & conditions

- Provides necessary authority for supportive housing and supported employment benefits
  - Home and Community Based Services (HCBS)
  - Statewide functional needs assessment
  - Protocol to provide further detail
- Authorizes a waitlist
  - Helps ensure those receiving services will maintain access in the event demand for services outpaces available funding



# Supportive housing

## Community Transition Services (NEW to FCS)

One-time supports for individuals transitioning out of institutions or at imminent risk of becoming institutionalized

Includes rental deposit, move-in costs, household furnishings and other necessary supports

## Community Support Services

Housing assessment and development of a plan to address barriers

Assistance with applications, community resources, and outreach to landlords

Education, training, coaching, resolving disputes, and advocacy

*Supportive housing services **do not** include funds for room and board or the development of housing.*



# Community transition services

## NOT room & board

- One-time expenses

## Provided today under 1915c waivers

- WA: COPES Waiver, DD Community Transition Services

## Institutional level of care

- Eligibility limited to a subset within the target populations who meet an institutional level of care
- “Institution” will be defined in protocol



# Supportive housing target population

- Chronically homeless (HUD definition)
- Frequent/lengthy institutional contact
- Frequent/lengthy adult residential care stays
- Frequent turnover of in-home caregivers
- PRISM Score 1.5+
  - (Predictive Risk Intelligence System)



# Supported employment

## *Individual Placement and Support (IPS) model*

### Principles of supported employment

- Open to anyone who wants to work
- Focus on competitive employment
- Prioritize rapid job search
- Client preferences guide decisions
- Individualized long-term supports
- Integrated with treatment
- Benefits counseling included

### Services may include

- Employment assessment and development of a plan to address barriers
- Assistance with applications, community resources and outreach to employers
- Education, training, coaching to maintain employment





## Supported employment target population

- Aged, Blind, Disabled (ABD)/Housing and Essential Needs (HEN)
- Individuals with severe and persistent mental illness, individuals with multiple episodes of inpatient substance use treatment and/or co-occurring
- Working age youth with behavioral health conditions
- Individuals receiving long-term services and supports



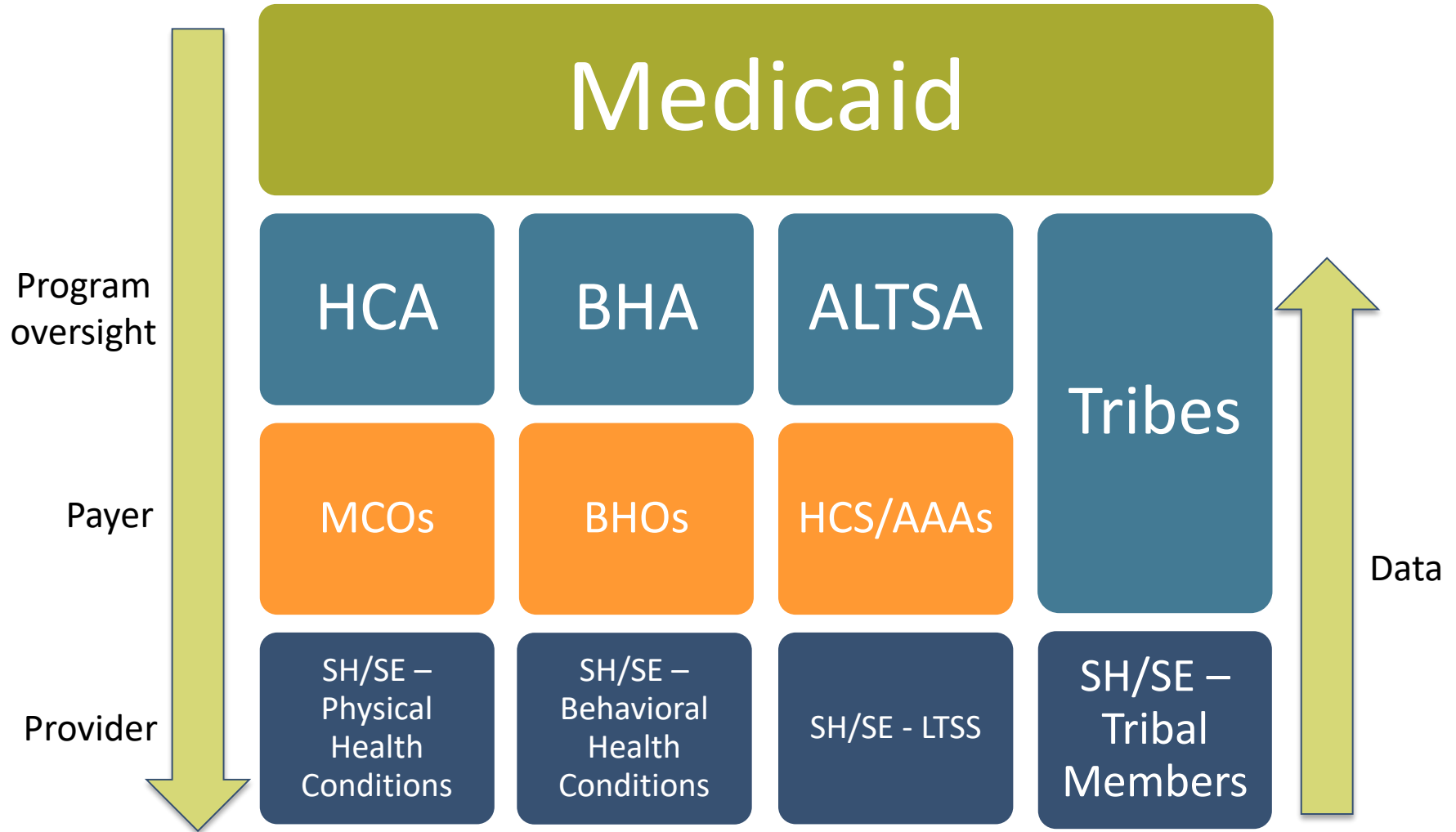
# Service Impact: A Provider Perspective

Craig Dublanco, CEO

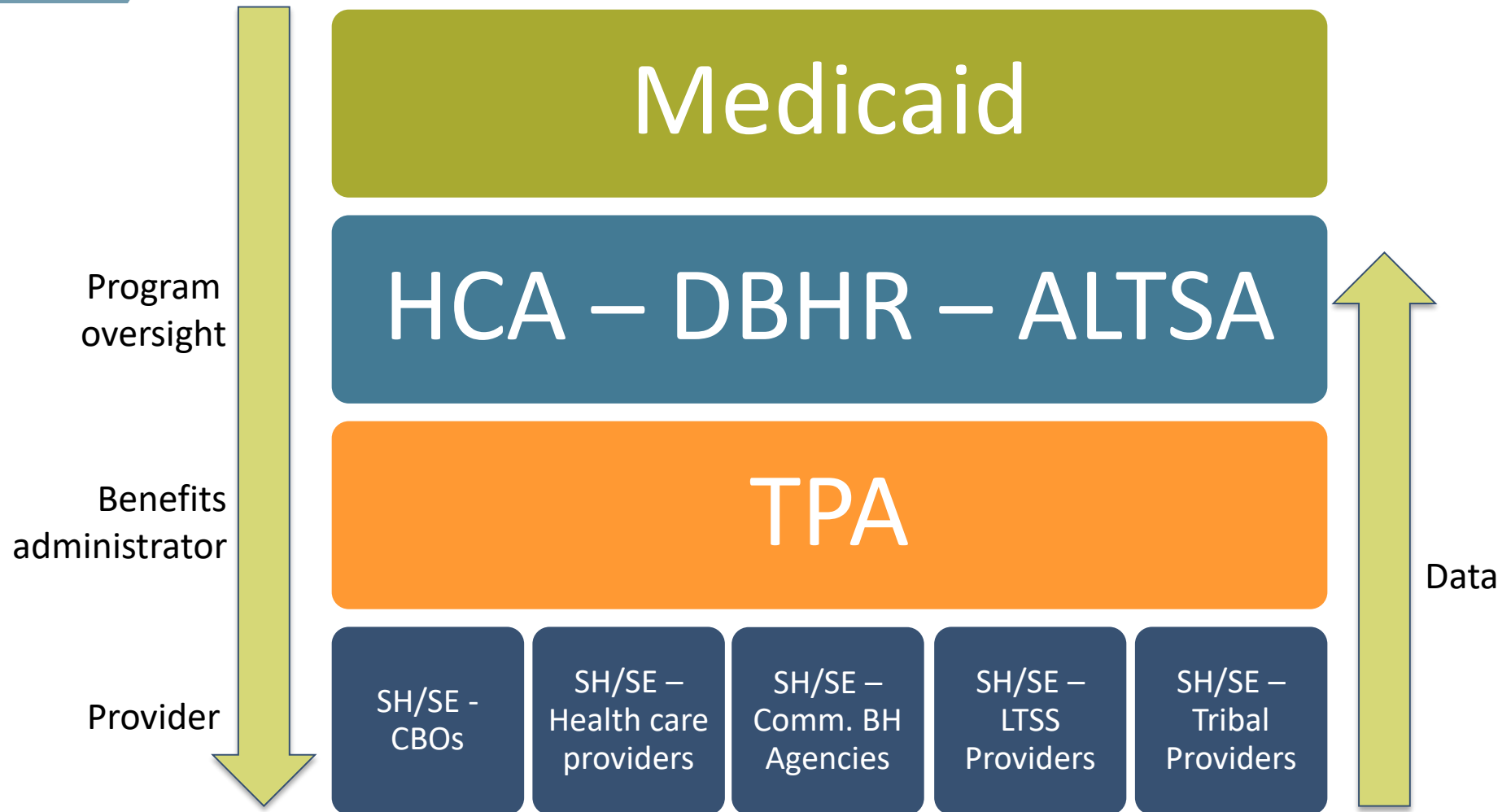


# Third Party Administrator

# Medicaid funds flow previous model



# Medicaid funds flow Current Model





## Third party administrator

- Single administrative entity for supportive housing & supported employment.
- No longer to be administered through MCOs, BHOs, LTSS

### **HOWEVER**

- Services and target populations remain the same
- Providers previously eligible to provide the service



# What is a third party administrator?

- Contracted with the state
- Provides administrative oversight of benefit programs
  - Provider network development and maintenance
  - Service authorization
  - Distribution of reimbursement payments
  - Data/encounter tracking



# TPA Recommendation

- November 2016 report by Public Consulting Group
  - Commissioned by the Office of Financial Management
- Report Recommendation:
  - “...we recommend the state retain a separate, statewide supportive housing care manager to effectively establish and administer the benefit for the first 30 months. Once capacity is built, supportive housing would fully integrate with Medicaid managed care organizations on January 1, 2020.”
- Link:  
[http://www.ofm.wa.gov/reports/FinalRecommendations%20Report\\_11.28.16.pdf](http://www.ofm.wa.gov/reports/FinalRecommendations%20Report_11.28.16.pdf)





# Why use a third party administrator?

## For the demonstration

- Streamline administration and funds flow
- Monitor usage via single information source
- Single point of accountability
- Single data source for evaluation

## For sustainability

- Build the program in order to transition to a sustainable model post-demonstration
  - Goal is to include managed care and fee-for-service components in the sustainability approach, post-third party administrator



## What does this mean for providers?

- Single contracting entity for both benefits
- HCA, BHA and ALTSA will continue to provide technical assistance and consultation
- Existing housing & employment providers will still be able to provide FCS services



# What does this mean for beneficiaries?

- Target populations remain the same
- Service array remains the same
- Single point of accountability
  - Benefit eligibility decisions
  - Service authorization
  - Appeals



# Foundational Community Supports

## *Next steps*

### Foundational Community Supports protocol

- Protocol must be approved before services can be provided

### Third party administrator

- Procurement will be released shortly

### WAC

- HCA: Program authorization
- DBHR: Certification WAC

### Initial provision of services to begin July 2017

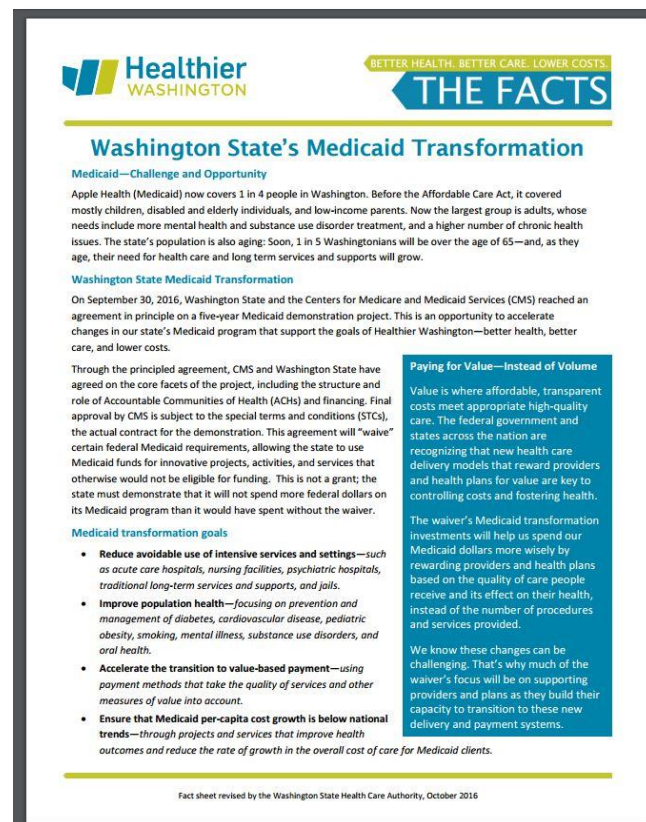
- Benefits will be provided statewide

# Learn more

## Communications Library features:

- Demonstration videos
- Fact sheets
- Timeline
- Presentation slide deck

[www.hca.wa.gov/hw](http://www.hca.wa.gov/hw)



# Have questions?

Please use the “Questions” section in the webinar panel to engage with our speakers.

- Nathan Johnson, chief policy officer, HCA
- MaryAnne Lindeblad, Medicaid director, HCA
- Jon Brumbach, senior health policy analyst, HCA Division of Policy, Planning & Performance



**Join the Healthier  
Washington Feedback  
Network. Sign up at:  
[hca.wa.gov/hw](https://hca.wa.gov/hw)**

**Send questions to:  
[medicaidtransformation  
@hca.wa.gov](mailto:medicaidtransformation@hca.wa.gov)**

