

# Delivery Statistics Report (2016 Births)

## Walla Walla General Hospital

Walla Walla, WA Walla Walla County

Perinatal Level of Care: Level 1 Non-CAH

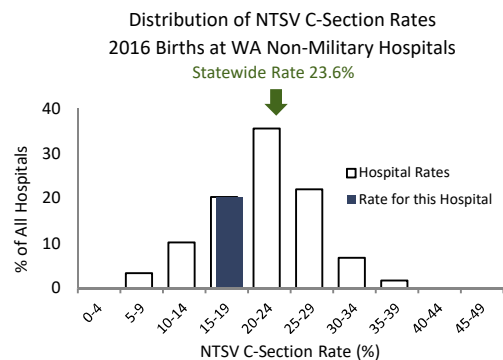


### Deliveries and Medicaid Status

	2014	2015	2016	3-year TOTAL	Net Change '15 to '16
Total Deliveries	154	176	76	406	-100
Deliveries with Medicaid-paid Maternity Care	104	136	54	294	-82
Percent Medicaid Deliveries	68%	77%	71%	72%	-6%
Percent Medicaid for Deliveries in this County	58%	64%	61%	61%	-3%

### C-Sections Among Nulliparous Term Singleton Vertex (NTSV) Deliveries

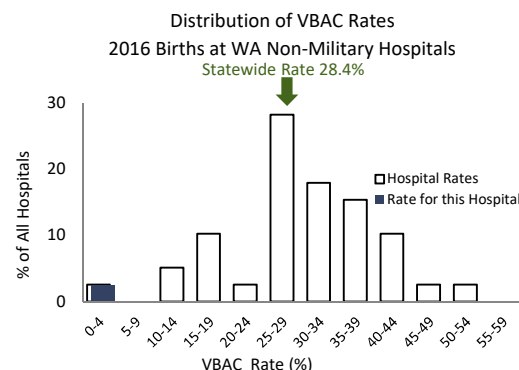
	2014	2015	2016	Net Change '15 to '16	3-year
NTSV Deliveries	43	61	16	-45	120
<b>NTSV C-Section Rates</b>					
Rate for this Hospital	30.2%	14.8%	18.8%	4.0%	20.8%
Level 1 Non-CAH Hospitals	22.3%	22.0%	22.7%	0.7%	22.3%
Hospitals Statewide	23.7%	23.5%	23.6%	0.1%	23.6%



This hospital's 2016 NTSV c-section rate of 18.8% was lower than the statewide rate of 23.6% .

### Vaginal Births After Cesarean (VBAC) for Term Singleton Vertex Deliveries

	2014	2015	2016	Net Change '15 to '16	3-year
Deliveries Post-C-Sec	12	14	7	-7	33
<b>VBAC Rates</b>					
Rate for this Hospital	8.3%	7.1%	0.0%	-7.1%	6.1%
Level 1 Non-CAH Hospitals	18.5%	19.1%	16.6%	-2.5%	18.1%
Hospitals Statewide	25.5%	27.1%	28.4%	1.3%	27.0%

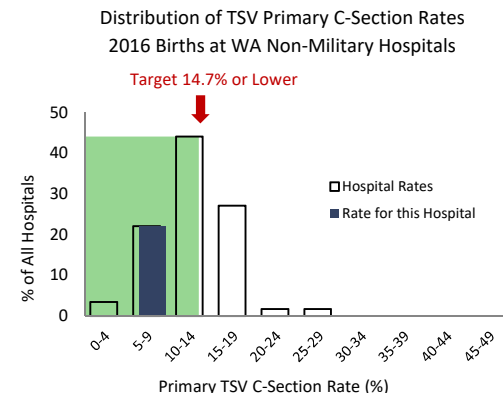


This hospital does not provide planned vaginal birth delivery services after a prior cesarean section.

### Primary C-Sections Among Term Singleton Vertex (TSV) Deliveries

GOAL: decrease primary C-sections among TSV deliveries to 14.7%

	2014	2015	2016	Net Change '15 to '16	3-year
TSV Deliveries/No Prior C	116	124	57	-67	297
<b>Primary C-Section Rates</b>					
Rate for this Hospital	11.2%	8.1%	8.8%	0.7%	9.4%
Level 1 Non-CAH Hospitals	12.2%	12.1%	12.2%	0.1%	12.2%
Hospitals Statewide	14.1%	13.7%	13.8%	0.1%	13.9%

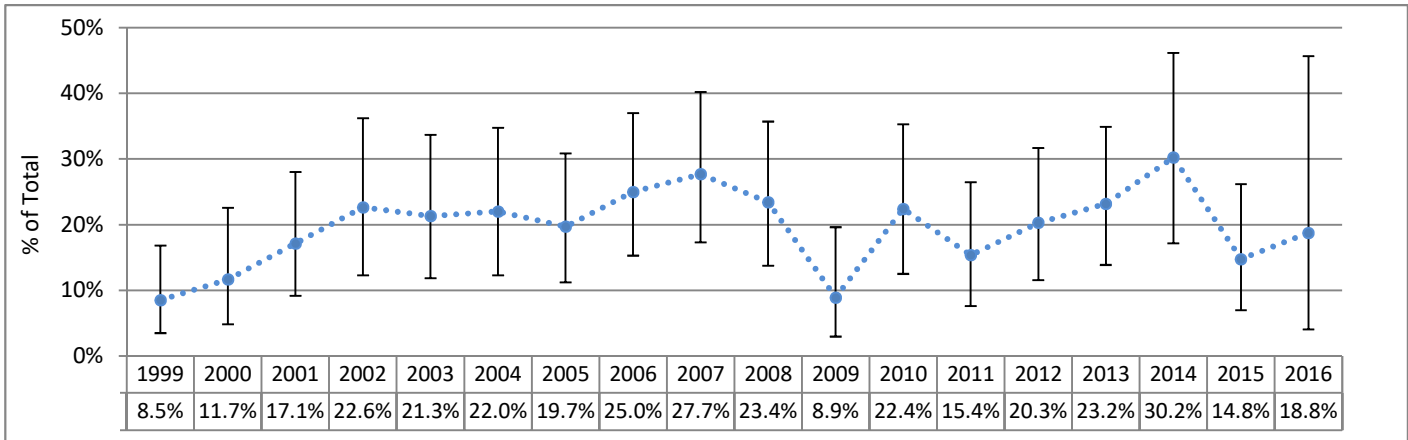


This hospital's 2016 Primary C-Section rate of 8.8% was lower than the Results Washington statewide 2016 target of 14.7%.

# Walla Walla General Hospital

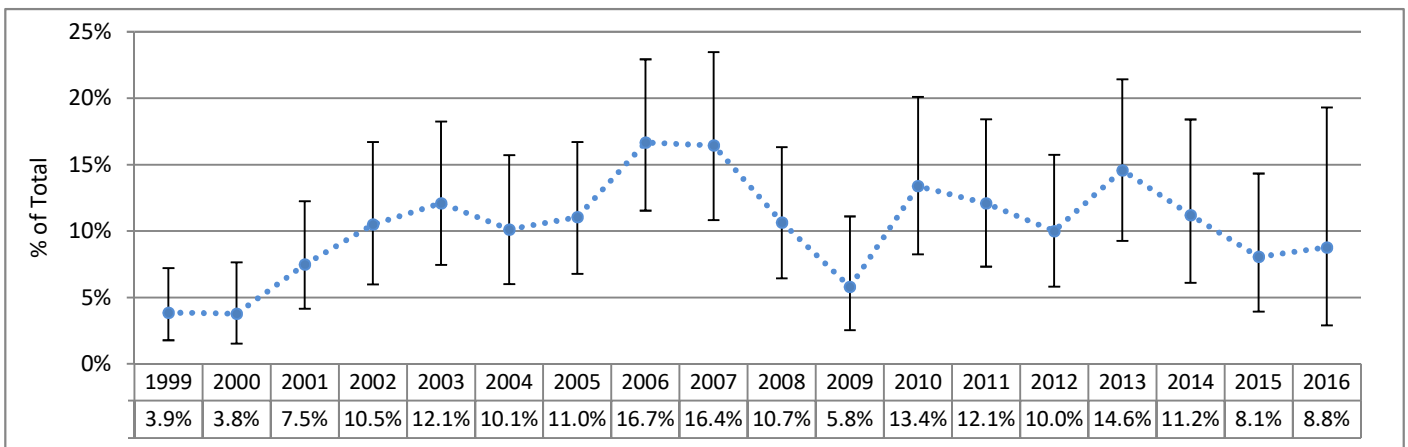
## C-Sections Among Nulliparous Term Singleton Vertex (NTSV) Deliveries 1999 - 2016

Hospital Rate with 95% Confidence Limits



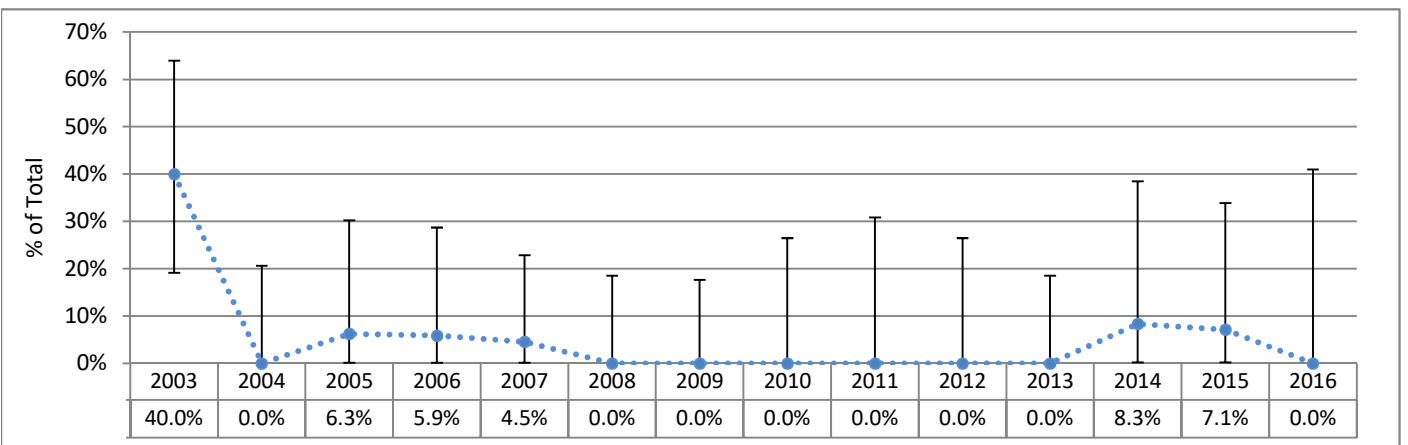
## Primary C-Sections Among Term Singleton Vertex (TSV) Deliveries 1999 - 2016

Hospital Rate with 95% Confidence Limits



## Vaginal Birth After Cesarean Among Term Singleton Vertex (TSV) Deliveries 2003 - 2016

Hospital Rate with 95% Confidence Limits



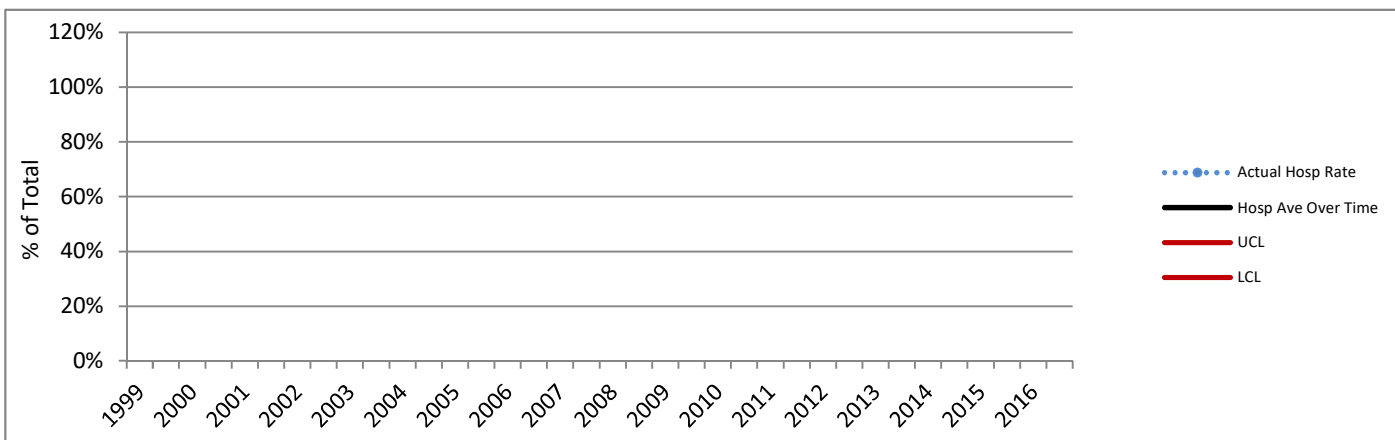
95% Confidence Limits show the range within which a data point could reasonably be the result of random variation. Points outside of this range are considered to differ significantly from the point for which the confidence limit is calculated, since there is only a 5% chance that the difference is due to random variability.

## Walla Walla General Hospital

### Charts Not Displayed Due to Small Numbers for at Least Some Six-Month Intervals

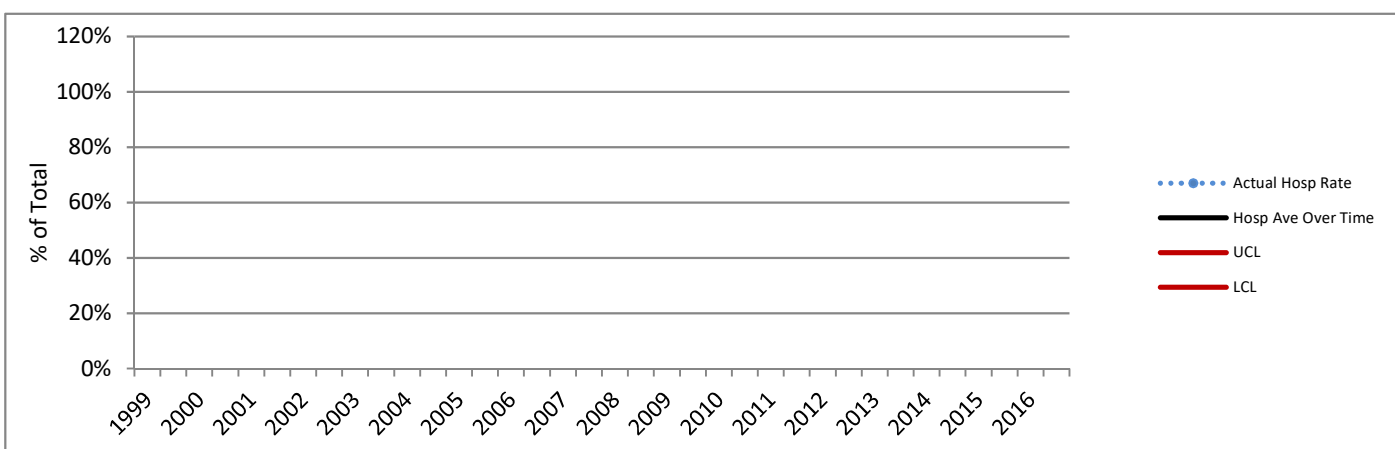
#### C-Sections Among Nulliparous Term Singleton Vertex (NTSV) Deliveries 1999 - 2016 (Six-Month Intervals)

Actual Hospital Rate Compared to Hospital Average Across Time



#### Primary C-Sections Among Term Singleton Vertex (TSV) Deliveries 1999 - 2016 (Six-Month Intervals)

Actual Hospital Rate Compared to Hospital Average Across Time



Charts based on the Hospital average over time are not presented where the Hospital number of deliveries for any six-month period did not meet the standard recommended size for upper (UCL) and lower (LCL) control lines based on 3 standard deviations. Rates above or below the red lines show a greater difference from the average than do those between the red lines.

**DATA SOURCES AND DEFINITIONS:** Certificates for live births and fetal deaths were provided by the DOH Center for Health Statistics and included in the First Steps Database. Medicaid status was determined by individual-level linkage to Medicaid claims and eligibility performed by the First Steps Database. Years refer to calendar years.

**Excludes** births in military facilities or facilities that do not typically perform deliveries. C-Section measures exclude cases where mother was transferred to higher level care for maternal medical or fetal indicators for delivery, or hospital births where intended place of birth was other than hospital.

**Perinatal Level of Care designation** is as of 2016 for all years shown. **Total Deliveries** includes live births and fetal deaths after 20 weeks' gestation. **Medicaid** refers to births to women who received Medicaid-paid maternity care. **C-Sections (NTSV)** is the percent of Cesarean sections among nulliparous, term, singleton, liveborn, vertex deliveries. **Term** is defined as gestational age of at least 37 completed weeks. For reports as of November 2015, the gestational age used for term designation is based on calculated best estimate of gestational age for years before 2003, and on obstetric estimate of gestation for years 2003 and later. **Vaginal Births After Cesarean (VBAC)** is the percent of vaginal births among live births to appropriate candidates. Women whose pregnancies were at term, had a single fetus with vertex presentation, and who had one prior C-section were considered **appropriate candidates for VBAC**. Number of prior C-sections is determined by Birth Certificate number reported and by longitudinal linkage. **Chart comparison VBAC Rates** are limited to hospitals that offer planned vaginal birth delivery after a prior Cesarean section (VBAC). **Primary C-Sections** is the percent of Cesarean sections among term, singleton, liveborn, vertex deliveries to women with no prior C-sections. The **Primary TSV C-Section Target** for Washington State is based on Results Washington (see [www.results.wa.gov](http://www.results.wa.gov)).