

Crisis Care Centers Initiative Presentation

Washington State CRIS Committee

August 29, 2023

Michael Reading, Chief of Crisis Systems and Services, mreading@kingcounty.gov

Kate Baber (she/her), CCC Implementation Planning Director, kbaber@kingcounty.gov

Agenda

Crisis Care Centers Initiative Overview

Initiative Timeline

Planning Update

Community Partner Engagement

Questions

Why the Crisis Care Centers Initiative is Needed



Families and People in Crisis need places to go for help instead of waiting for a crisis to get worse.



Law Enforcement and First Responders need better, more equitable, and faster options than jail and emergency rooms.



Mobile Crisis Teams need access to places where people in crisis can get immediate help when outreach is not enough.



Hospitals need to preserve capacity for the most medically complex patients & need places that divert less severe cases.



988 needs places to send callers needing higher-level care.

King County Crisis Care Centers Levy

Full Ordinance Online:

<https://info.kingcounty.gov/kcelections/Vote/contests/ballotmeasures.aspx?lang=en-US&cid=100765&groupname=County#collapseSixInverse>

1.

Create five new regional crisis care centers:



Distributed geographically across the county, the centers will provide walk-in access and the potential for short-term stays to help people stabilize, depending on needs, with one center specifically serving youth.

Currently

One 46-bed crisis center for 2.3 million people in our county



2.

Preserve and restore the dramatic loss of residential treatment beds:



In 2018, 355 beds providing community-based residential care for people with mental health residential needs existed in King County. Today, only 244 of these beds are available.

Currently

Loss of 1 in 3 of our residential treatment beds in recent years



As of July 2022, people waited an average of 44 days for a mental health residential bed.



3.

Grow the behavioral health workforce pipeline:



The proposal will create career pathways through apprenticeship programming and access to higher education, credentialing, training, and wrap-around supports. It will also invest in equitable wages for the workforce at crisis care centers.

Currently

Historic labor shortages
A 2021 King County survey of member organizations of the King County Integrated Care Network found that job vacancies at community behavioral health agencies

were at least double what they were in 2019.



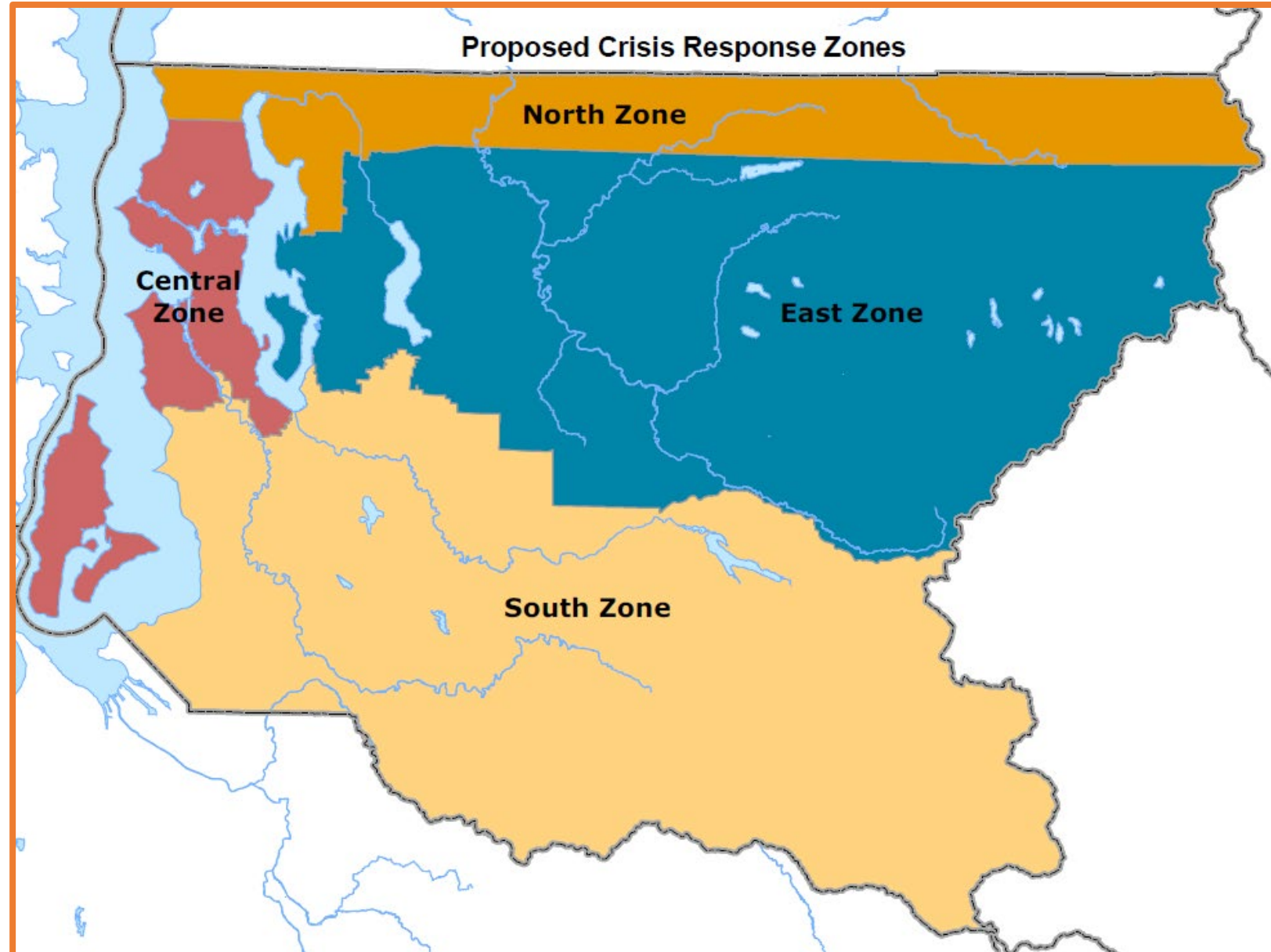
Programmatically, CCC is primarily a Capital Initiative. But operations are likely 40% or more of budget.

Paramount Purpose: A Regional Network of 5 CCCs

§1.C defines 4 Crisis Response Zones

- **Each Crisis Response Zone hosts at least one CCC**
- **At least one CCC specializes in serving children**

The purpose of Crisis Response Zones (CRZs) is to promote localized access geographic distribution of CCCs. CRZs do not restrict who can access which CCC.



Clinical Model: What is a Crisis Care Center (CCC)?

Same Day Access to multiple types of crisis behavioral health services:

24/7 BH Urgent Care: Walk-in & drop-off, triage & med refills

23-Hour Observation: Safe space, medical support

14-Day Crisis Stabilization: 16 beds for short-term care

Post-Crisis Follow-Up: Bridging & navigation

No Wrong Door: “Shall endeavor to accept at least for initial screening and triage any person...”

Treat **MH & SUD** and promote **integrated physical health**

Staff must be **multidisciplinary** and include **peers**.

Onsite access to a **DCR** (Designated Crisis Responder)

Other aspects of the CCC clinical model are in development

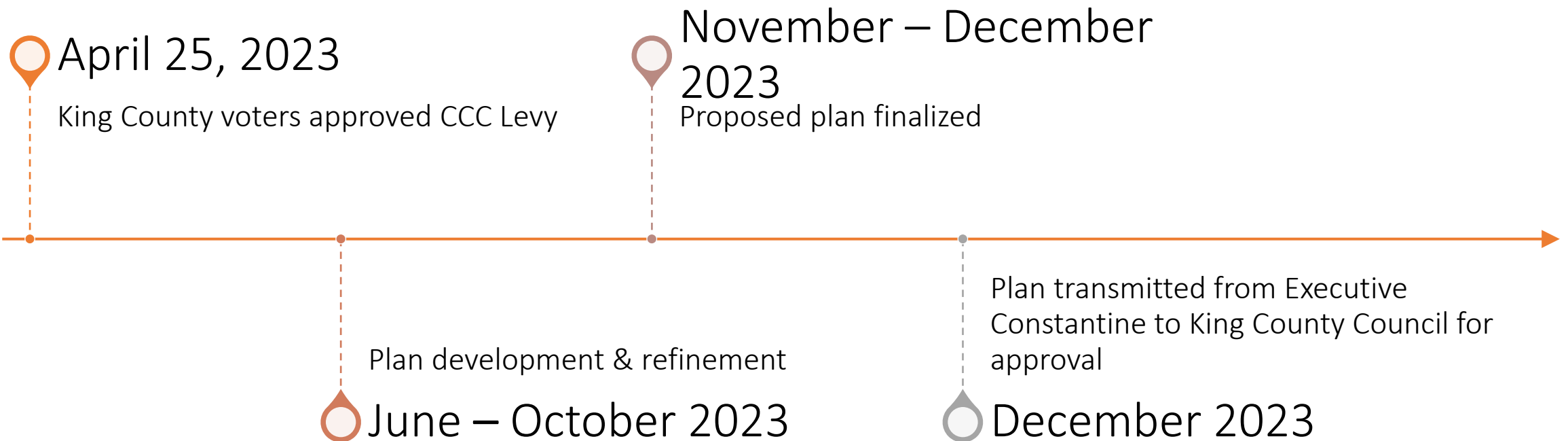
Crisis Care Centers Initiative Timeline

- **Phase 1 (2022-23):** Ballot measure ordinance development and election
- **Phase 2 (2023):** Implementation plan development (**current phase**)
- **Phase 3 (2024):** Crisis Care Centers competitive procurement
- **Phase 4 (2024-32):** Initiative implementation and quality improvement

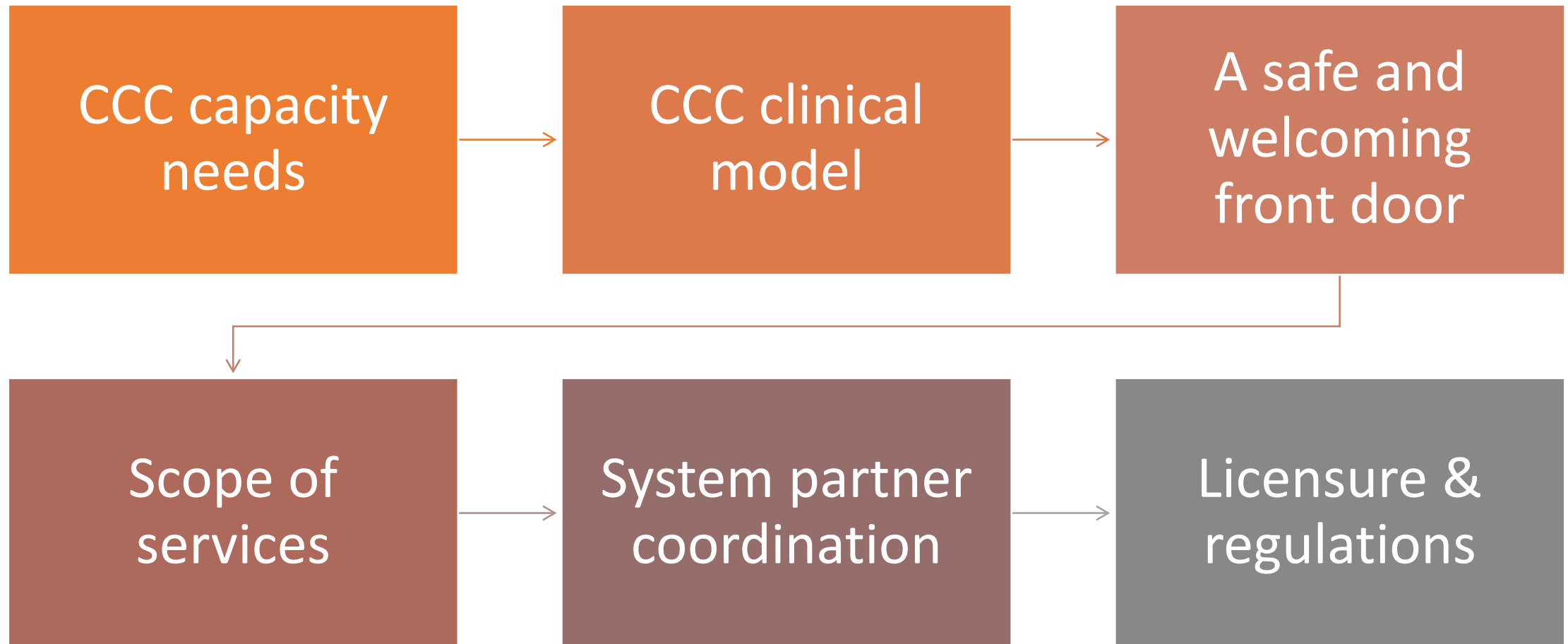
Community Engagement Throughout Entire Initiative



Implementation Planning Timeline



Crisis Care Center Planning Update



Mental Health Residential Planning Update

Two objectives: Stabilization
& Restoration

Evaluation of Mental Health
Residential continuum of services

Exploration of existing activities to
understand stabilization needs

Community partner engagement

Workforce Planning Update



EXPAND BEHAVIORAL
HEALTH WORKFORCE



RETAIN CURRENT
BEHAVIORAL HEALTH
WORKFORCE



INCREASE
REPRESENTATION -
CREATION OF A MORE
DIVERSE WORKFORCE

CRISIS CARE CENTERS INITIATIVE **GET INVOLVED!**

Planning is underway for the voter approved Crisis Care Centers Initiative! The initiative makes a generational investment in the behavioral health system and will create a countywide network of five crisis care centers, restore the number of mental health residential treatment beds in the region, and bolster the community behavioral health workforce.

The implementation team is convening planning meetings, working with the coalition that helped create the Crisis Care Centers Initiative, and listening to community feedback.

Check out how you can learn more or share your feedback!

We Want to Hear From You



Email:

CCCLevy@kingcounty.gov

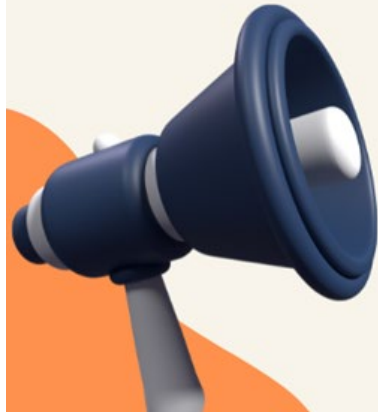
Crisis Care Centers Website:

bit.ly/CrisisCareCentersInitiative

Community Information Update Survey:

bit.ly/3s3fmKF

OR
Scan Here



Questions?