

Access to Baby and Child Dentistry: expansion population update

Heather Gallagher, ABCD Managing Director
Sarah Vander Beek, DMD, CQCT, Dental Director
December 12, 2024

ARCORA
Foundation

Washington State
Health Care Authority

What is ABCD?

Access to Baby and Child Dentistry (ABCD)

puts young children across Washington state on a lifelong path to good oral health.

ABCD connects Apple Health (Medicaid) families with providers who know how to care for young children, focusing on prevention and avoiding tooth decay, as well as educating parents about how to take good care of their children's teeth.



ABCD system of care

SPOKANE REGIONAL HEALTH DISTRICT Dental Health Program
Access to Baby and Child Dentistry (ABCD)

Welcome, Let's Get Started!

Choose
Choose a dentist from the list provided by your Access to Baby and Child Dentistry (ABCD) Coordinator.

Call
Make an appointment and be sure to let them know your child is in the ABCD program.

When to Go
When child's first tooth comes in or by age 1.

ProviderOne Card
Bring to EVERY dental appointment.

Change or Cancel Appointments

Anxiety about the dentist?
How to make dental visits stress-free:

- Arrive to the visit on time
- Bring your child's ProviderOne Services Card



Brief history and timeline



Expansion path

- ▶ Expanded ABCD eligibility for children up to age 12 with intellectual disabilities identified in ProviderOne with a Developmental Disabilities Indicator.
- ▶ Includes disabilities like cerebral palsy, epilepsy, autism, or related conditions.



Governor Inslee signing the bill to expand ABCD eligibility.

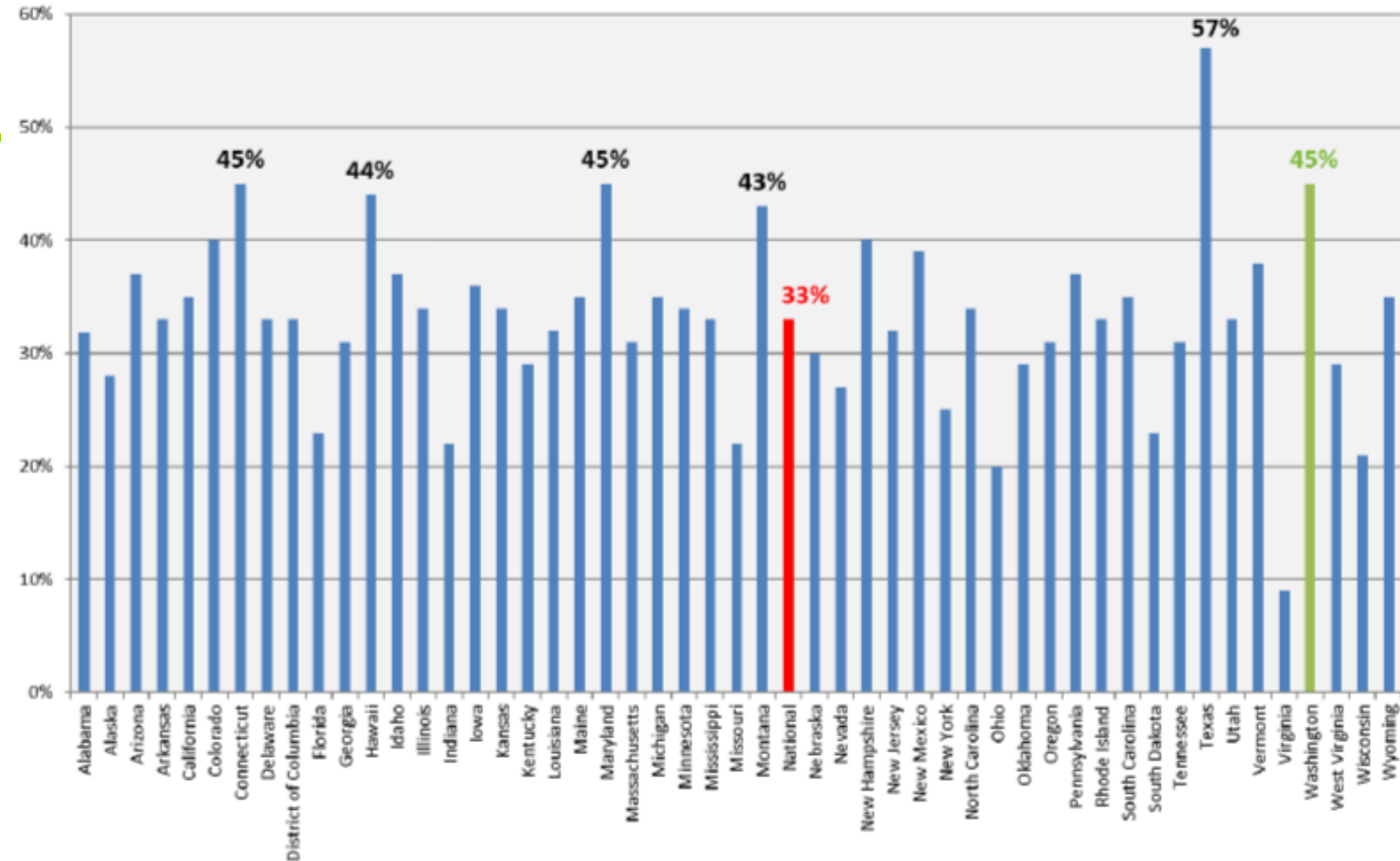
Why does expansion matter?

- ▶ Studies find that people with intellectual disabilities experience:
 - ▶ Poorer gingival health
 - ▶ Caries, also known as tooth decay
 - ▶ More untreated disease
 - ▶ More missing teeth due to caries
 - ▶ Fewer restored teeth
- ▶ Increased barriers to access oral health care into adulthood

ABCD impacts

- ▶ Washington is a top performer:
 - ▶ Utilization of preventive dental services

Percentage of children ages 0-5 enrolled in Medicaid for at least 90 continuous days receiving **preventative dental services** by or under the supervision of a dentist, 2021

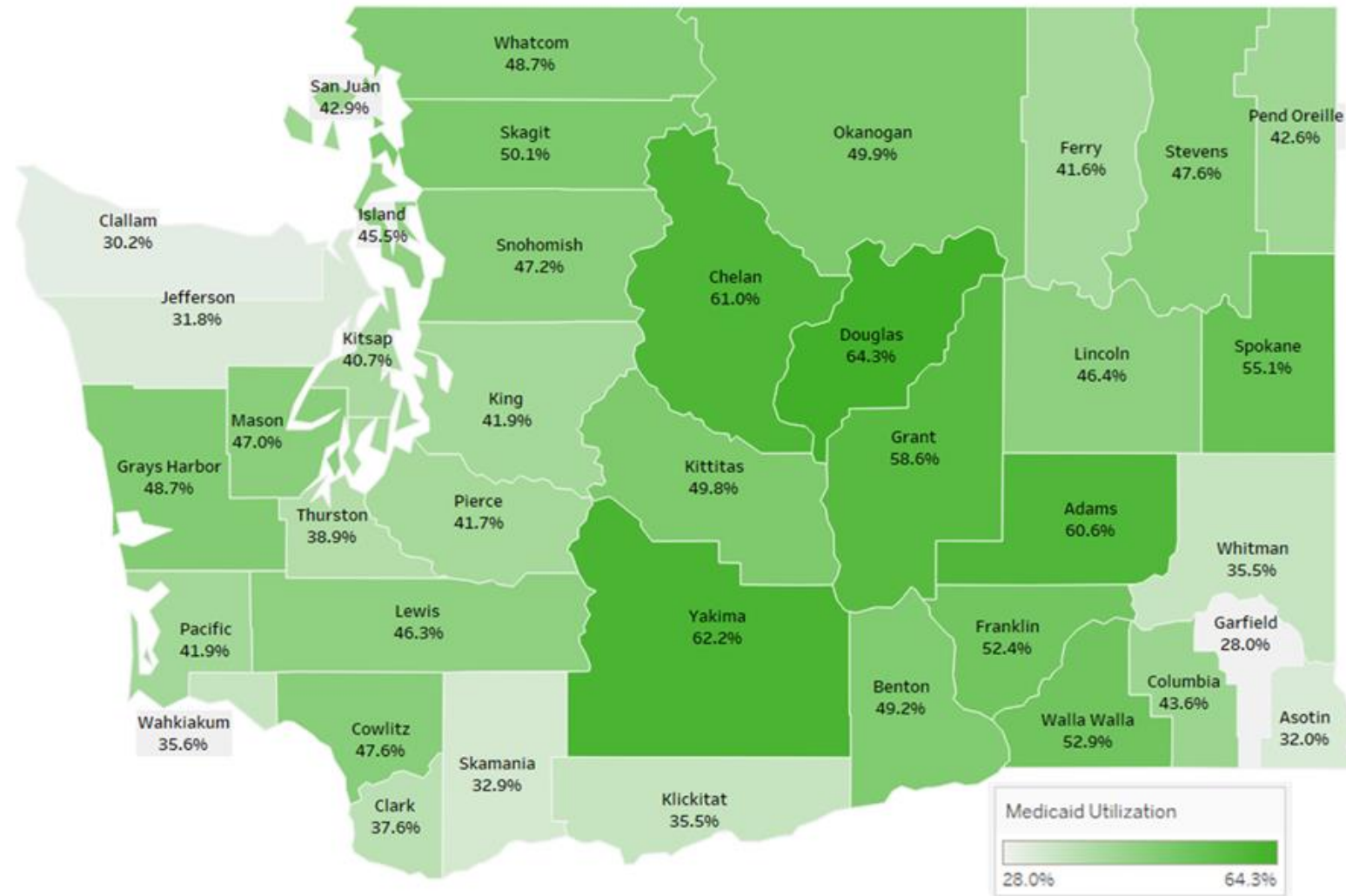


Note: National Medicaid data is from CMS-146 state annual Early and Periodic Screening, Diagnostic and Treatment (EPSDT) reports. EPSDT benefit provides comprehensive and preventative health care services of children under age 21 who are enrolled in Medicaid. It is key to ensuring that children and adolescents receive appropriate preventative, dental, mental health, developmental, and specialty services.

ABCD impacts, cont.

- ▶ Washington is a top performer:
 - ▶ Utilization of dental services
- ▶ Statewide average utilization in FY 2023 was **48%**

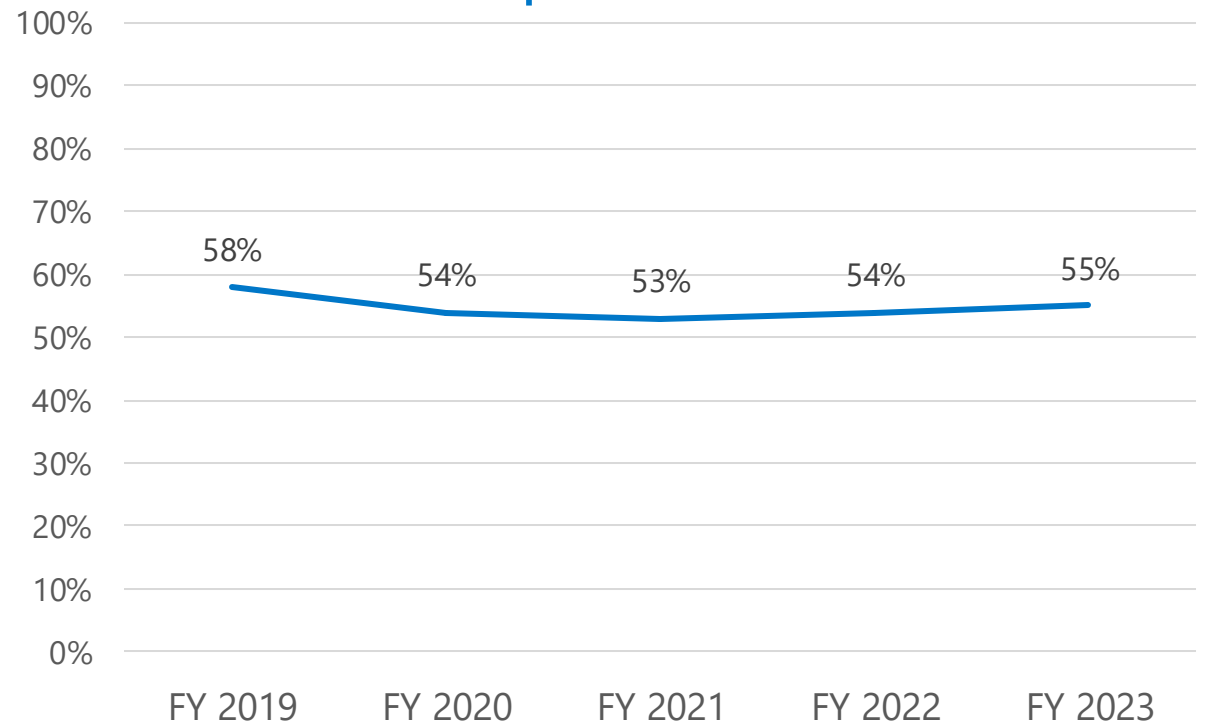
Apple Health dental utilization by county for children under age 6, FY 2023



ABCD expansion utilization

- ▶ Small and measurable improvement since implementation

Apple Health dental utilization among
ABCD expansion children



A photograph of a woman with dark curly hair carrying a young girl with dark curly hair on her back. Both are laughing heartily. The woman is wearing a purple long-sleeved shirt, and the girl is wearing a white long-sleeved shirt under a denim vest. They are outdoors with green foliage in the background.

ABCD providers

- ▶ 2350 providers billed during FY 2023
- ▶ 187 providers have received an ABCD-Enhanced Indicator
- ▶ 171 providers billed during FY 2023 with an ABCD-Enhanced Indicator

Learnings

- ▶ Eligibility via the indicator: limiting and challenging to identify for providers, coordinators, and clients
 - ▶ Many children with an intellectual or developmental disability do not have a DDA indicator
- ▶ Provider engagement and network:
 - ▶ Overhauling certification aspect of ABCD based on recent feedback planning session from the coordinators and providers
 - ▶ Transition from pediatric to general dentist: gap

Learnings, cont.

- ▶ Many patients can develop positive experience in the dental setting, and this may require an individualized plan (time, visits)
- ▶ Payment model in dentistry does not address or recognize this in its current form
 - ▶ Extends beyond state – national issues
 - ▶ Emerging successful and best practices around sensory-adapted dental environments and desensitization interventions

Summary

- ▶ ABCD has demonstrated success on improving children's access to oral health in Washington.
- ▶ ABCD expansion is showing a similar, albeit smaller, trend.
- ▶ National landscape is focused on population of patients with disabilities given known challenges and disparities
 - ▶ Opportunities to learn emerging best practices and how to apply them in Washington

Questions?

Children's oral health

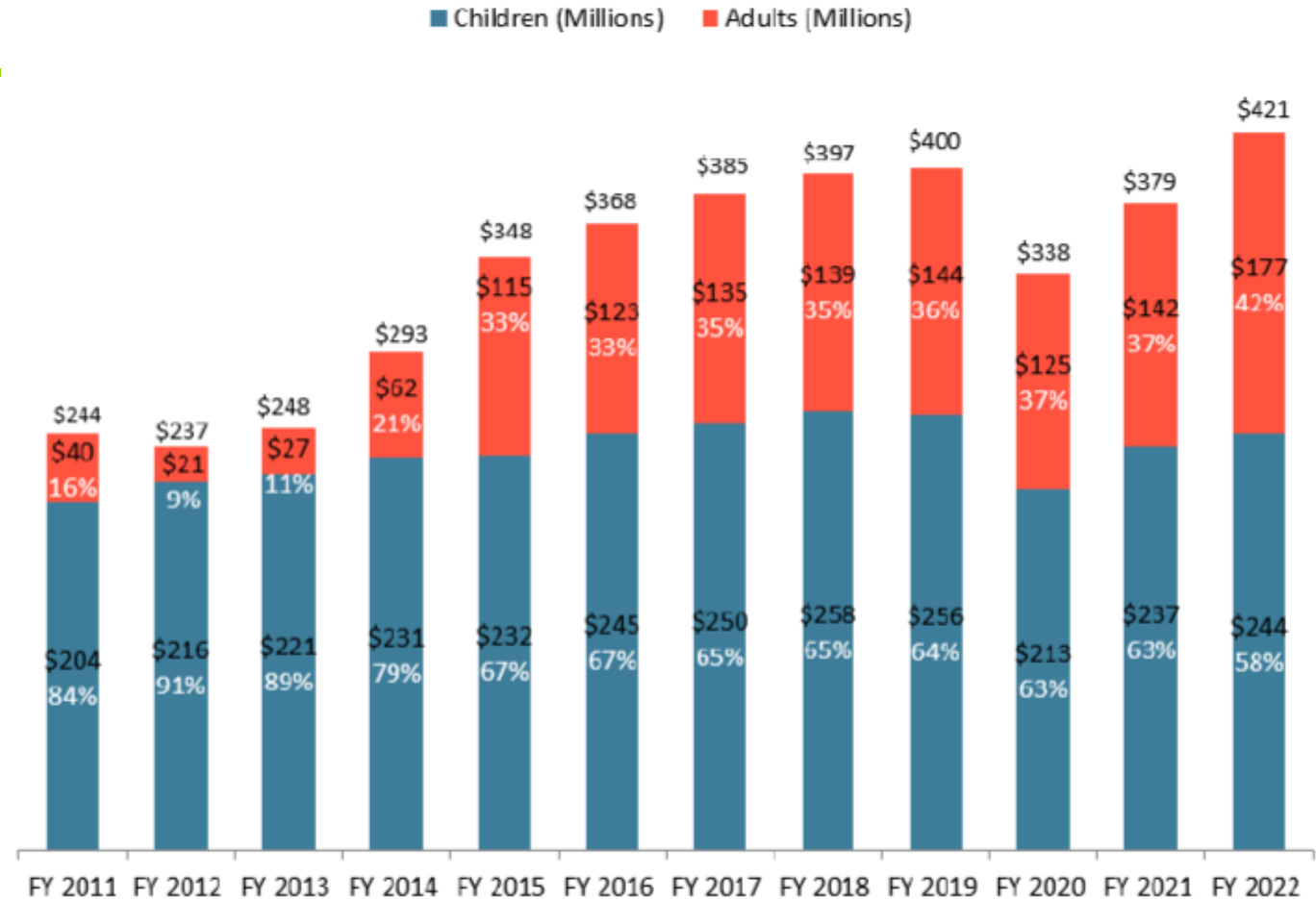
Sarah Vander Beek, DMD, CQCT, Dental Director

Snapshot: Apple Health

- ▶ ~1 million children
- ▶ Fee-for-service
- ▶ National comparisons:
 - ▶ High performer in utilization metrics
 - ▶ Rates below national average for Medicaid
 - ▶ 30.7% (average is 39.2%)
 - ▶ Majority (2/3) served in private practice settings

Note: Children refer to users from birth through age 20, while adults refer to users 21 and over. Percentages refer to the proportion of total expenditures by users' age (adult vs. children)

Apple Health dental expenditures, adults and children, FY 2011–2022



Oral health impacts

▶ Economic burden in 2019

- ▶ Global: \$710 billion (direct and indirect)
- ▶ United States: \$133 billion (direct) and \$78 billion (indirect)

▶ Systemic health connections

▶ Individual:

- ▶ Psychological
- ▶ Pain and infection
- ▶ Employability

A major public health problem

- ▶ Increasing disease burden
 - ▶ Caries in primary teeth is the greatest predictor for future caries in permanent teeth
- ▶ Sustainability
 - ▶ Cost of “cavity” management
- ▶ Separate from physical health

Paradigm shift: modern caries management

▶ Effective prevention and early intervention

- ▶ Silver diamine fluoride*
- ▶ Sodium Fluoride*
- ▶ Glass Ionomer*
- ▶ Sealants

▶ Individualized risk assessment over the lifespan

▶ System changes

- ▶ Place-based care
- ▶ Workforce
- ▶ Interprofessional coordination
- ▶ Technology
- ▶ Benefit design; payment methodology

▶ Data

*World Health Organization Essential Medicine List 2021

Questions?

► Contact

- Sarah Vander Beek, Dental Director
sarah.vanderbeek@hca.wa.gov
- Evan Klein, Special Assistant, Legislative & Policy Affairs
evan.klein@hca.wa.gov
- Shawn O'Neill, Legislative Relations Manager
shawn.oneill@hca.wa.gov