

# WISe Screening Report

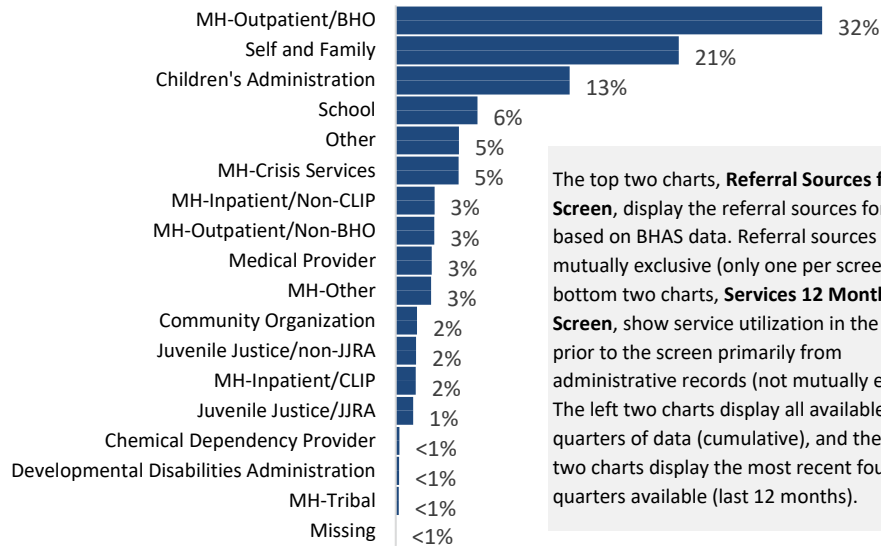
JULY 2018

## Referral Sources and Service History

### Referral Source for WISe Screen

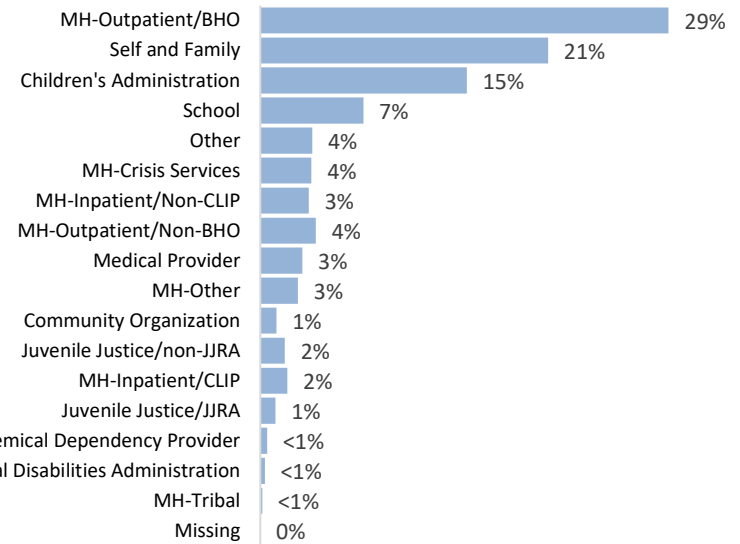
SOURCE: BHAS

#### CUMULATIVE July 2014 - March 2018



The top two charts, **Referral Sources for WISe Screen**, display the referral sources for screens based on BHAS data. Referral sources are mutually exclusive (only one per screen). The bottom two charts, **Services 12 Months Before Screen**, show service utilization in the year prior to the screen primarily from administrative records (not mutually exclusive). The left two charts display all available quarters of data (cumulative), and the right two charts display the most recent four quarters available (last 12 months).

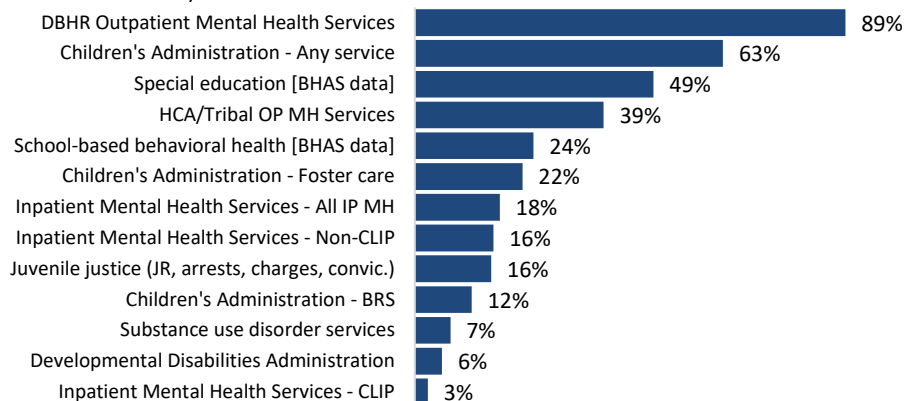
#### LAST 12 MONTHS April 2017 - March 2018



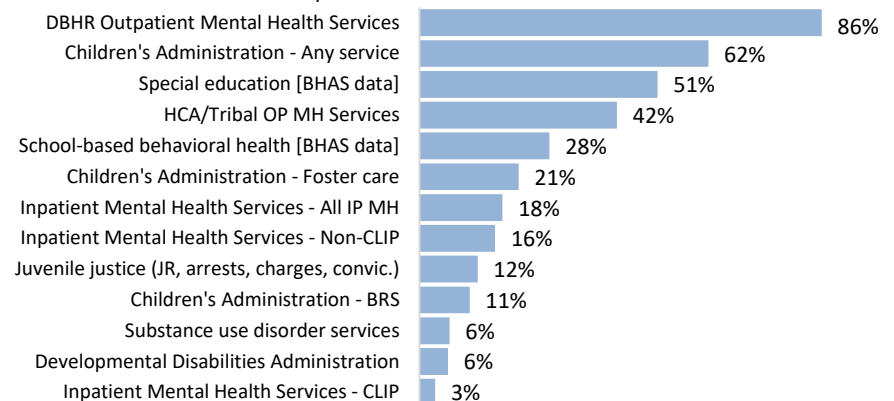
### Services 12 Months Before Screen

SOURCE: Admin data, except education items from BHAS

#### CUMULATIVE July 2014 - December 2017



#### LAST 12 MONTHS January 2017 - December 2017

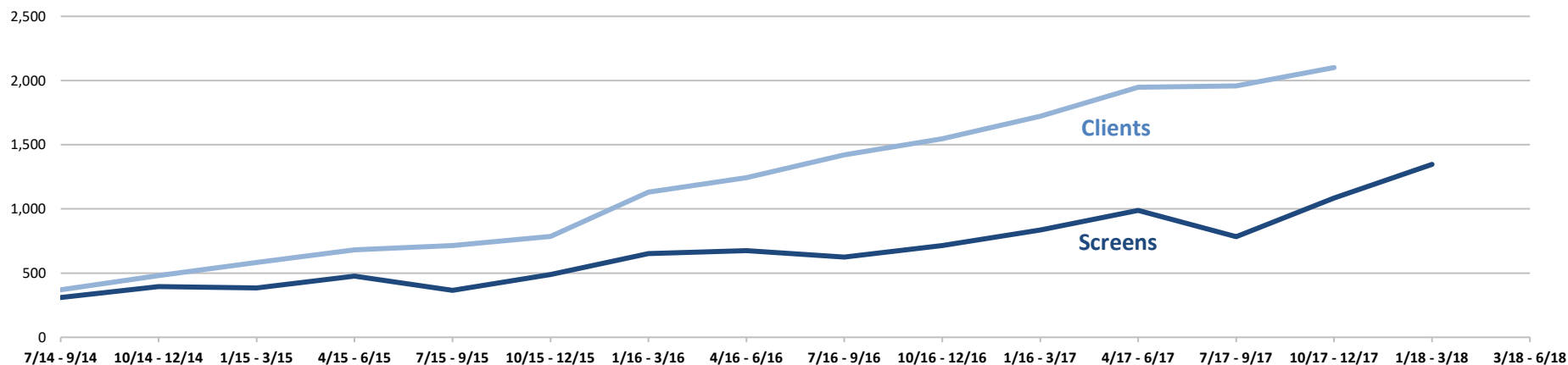


NOTES: Charts reflect data shown on page 3. See additional data notes on that page.

# WISe Screening Report

JULY 2018

## Quarterly Counts of Screens and Clients



QUARTER	NUMBER OF SCREENS (DUPLICATED)											NUMBER OF CLIENTS (UNDUPLICATED)										
	WASHINGTON	Great Rivers	Greater Columbia	King County	North Central	North Sound	Pierce County	Sallish	Southwest	Spokane Region	Thurston Mason	WASHINGTON	Great Rivers	Greater Columbia	King County	North Central	North Sound	Pierce County	Sallish	Southwest	Spokane Region	Thurston Mason
7/14 - 9/14	310	3	98			62	46		22		79	370	5	50			86	78		45	1	105
10/14 - 12/14	396	6	131			87	60		55		57	481	3	95			106	89		59	1	128
1/15 - 3/15	384	9	127			42	90		55		61	583	7	130			105	125		71		145
4/15 - 6/15	476	15	101			153	74		48	25	60	681	20	160			109	138		80	3	172
7/15 - 9/15	365	3	103			62	62		36	6	93	715	29	174			124	136		67	25	161
10/15 - 12/15	489	20	132			92	68		53	16	108	785	28	209			126	137		83	26	176
1/16 - 3/16	652	37	145		3	93	115		104	8	147	1,130	40	247	166	11	189	169		110	26	173
4/16 - 6/16	675	34	143	24	16	120	88	43	91	15	101	1,243	73	278	203	19	201	177	18	132	25	120
7/16 - 9/16	625	38	118	30	13	85	121	36	61	50	73	1,421	82	304	204	25	234	190	29	143	58	156
10/16 - 12/16	715	28	142	53	15	95	115	34	77	67	89	1,547	84	318	210	28	229	218	40	137	104	181
1/16 - 3/17	836	44	187	53	15	121	123	28	86	72	107	1,723	101	349	220	29	252	236	43	136	157	202
4/17 - 6/17	989	76	152	114	33	117	92	48	84	165	108	1,947	136	356	236	50	262	239	49	147	236	239
7/17 - 9/17	784	56	126	51	33	109	128	33	45	134	69	1,959	154	327	214	63	240	266	59	136	280	224
10/17 - 12/17	1,084	61	207	73	28	178	81	73	71	197	115	2,101	168	361	201	75	277	260	71	127	337	227
1/18 - 3/18	1,347	88	199	87	38	220	124	88	120	266	116											
3/18 - 6/18																						

NOTES: Counts of screens from WISe screening data (BHAS). Counts of screens are not unduplicated; a child may have more than one screen in any time period. Counts of clients from administrative data (ProviderOne). Counts of clients are unduplicated; a child may be counted at most once in each time period at the state level. Due to data lag, service data not yet complete beyond December 2017.

# WISe Screening Report

JULY 2018

## Statewide Screens

Duplicated Screens

### Referral Source for WISe Screen

SOURCE: BHAS

Referral Source for WISe Screen	WASHINGTON STATE				WASHINGTON STATE, Last 8 Quarters of Data															
	Cumulative 07/14-03/18		Last 12 months 04/17-03/18		04/16-06/16		07/16-09/16		10/16-12/16		01/17-03/17		04/17-06/17		07/17-09/17		10/17-12/17		01/18-03/18	
	N	PCT	N	PCT	N	PCT	N	PCT	N	PCT	N	PCT	N	PCT	N	PCT	N	PCT	N	PCT
MH-Outpatient/BHO	3,248	32.1%	1,236	29.4%	294	43.6%	188	30.1%	223	31.2%	242	28.9%	319	32.3%	213	27.2%	363	33.5%	341	25.3%
Self and Family	2,156	21.3%	871	20.7%	141	20.9%	177	28.3%	144	20.1%	193	23.1%	167	16.9%	207	26.4%	209	19.3%	288	21.4%
Children's Administration	1,326	13.1%	625	14.9%	43	6.4%	50	8.0%	63	8.8%	94	11.2%	111	11.2%	113	14.4%	141	13.0%	260	19.3%
School	622	6.1%	312	7.4%	50	7.4%	17	2.7%	55	7.7%	59	7.1%	96	9.7%	13	1.7%	87	8.0%	116	8.6%
Other	482	4.8%	157	3.7%	23	3.4%	20	3.2%	43	6.0%	40	4.8%	33	3.3%	55	7.0%	35	3.2%	34	2.5%
MH-Crisis Services	478	4.7%	155	3.7%	42	6.2%	30	4.8%	23	3.2%	30	3.6%	46	4.7%	26	3.3%	51	4.7%	32	2.4%
MH-Inpatient/Non-CLIP	296	2.9%	147	3.5%	13	1.9%	36	5.8%	38	5.3%	30	3.6%	36	3.6%	25	3.2%	36	3.3%	50	3.7%
MH-Outpatient/Non-BHO	294	2.9%	168	4.0%	6	0.9%	29	4.6%	30	4.2%	29	3.5%	38	3.8%	20	2.6%	37	3.4%	73	5.4%
Medical Provider	275	2.7%	127	3.0%	14	2.1%	18	2.9%	26	3.6%	31	3.7%	32	3.2%	28	3.6%	32	3.0%	35	2.6%
MH-Other	270	2.7%	114	2.7%	23	3.4%	21	3.4%	21	2.9%	20	2.4%	25	2.5%	26	3.3%	35	3.2%	28	2.1%
Community Organization	162	1.6%	49	1.2%	5	0.7%	13	2.1%	10	1.4%	8	1.0%	19	1.9%	15	1.9%	5	0.5%	10	0.7%
Juvenile Justice/non-JJRA	156	1.5%	74	1.8%	2	0.3%	5	0.8%	10	1.4%	14	1.7%	17	1.7%	8	1.0%	17	1.6%	32	2.4%
MH-Inpatient/CLIP	152	1.5%	82	2.0%	10	1.5%	12	1.9%	9	1.3%	22	2.6%	29	2.9%	23	2.9%	13	1.2%	17	1.3%
Juvenile Justice/JJRA	133	1.3%	46	1.1%	6	0.9%	7	1.1%	12	1.7%	17	2.0%	13	1.3%	10	1.3%	7	0.6%	16	1.2%
Chemical Dependency Provider	28	0.3%	21	0.5%	0	0.0%	0	0.0%	3	0.4%	3	0.4%	3	0.3%	1	0.1%	7	0.6%	10	0.7%
Developmental Disabilities Administration	25	0.2%	14	0.3%	3	0.4%	1	0.2%	0	0.0%	2	0.2%	3	0.3%	1	0.1%	7	0.6%	3	0.2%
MH-Tribal	23	0.2%	6	0.1%	0	0.0%	1	0.2%	5	0.7%	2	0.2%	2	0.2%	0	0.0%	2	0.2%	2	0.1%
Missing	1	0.0%	0	0.0%	0	0.0%	0	0.0%	0	0.0%	0	0.0%	0	0.0%	0	0.0%	0	0.0%	0	0.0%
<b>TOTAL</b>	<b>10,127</b>	<b>100%</b>	<b>4,204</b>	<b>100%</b>	<b>675</b>	<b>100%</b>	<b>625</b>	<b>100%</b>	<b>715</b>	<b>100%</b>	<b>836</b>	<b>100%</b>	<b>989</b>	<b>100%</b>	<b>784</b>	<b>100%</b>	<b>1,084</b>	<b>100%</b>	<b>1,347</b>	<b>100%</b>

### Services 12 Months Before Screen

SOURCE: Admin data, except BHAS education items

Services 12 Months Before Screen	Cumulative 07/14-12/17		Last 12 months 01/17-12/17		01/16-03/16		04/16-06/16		07/16-09/16		10/16-12/16		01/17-03/17		04/17-06/17		07/17-09/17		10/17-12/17	
	N	PCT	N	PCT	N	PCT	N	PCT	N	PCT	N	PCT	N	PCT	N	PCT	N	PCT	N	PCT
DBHR Outpatient Mental Health Services	7,771	88.7%	3,163	85.8%	565	86.7%	609	90.4%	569	91.2%	619	86.8%	736	88.0%	832	84.2%	681	87.1%	914	84.6%
Children's Administration - Any service	5,563	63.5%	2,272	61.6%	401	61.5%	404	59.9%	376	60.3%	457	64.1%	509	60.9%	597	60.4%	492	62.9%	674	62.4%
Special education [BHAS data]	4,310	49.2%	1,874	50.8%	290	44.5%	338	50.1%	297	47.6%	354	49.6%	410	49.0%	508	51.4%	403	51.5%	553	51.2%
HCA/Tribal OP MH Services	3,409	38.9%	1,553	42.1%	213	32.7%	279	41.4%	265	42.5%	286	40.1%	347	41.5%	413	41.8%	341	43.6%	452	41.9%
School-based behavioral health [BHAS data]	2,144	24.5%	1,022	27.7%	132	20.2%	151	22.4%	127	20.4%	171	24.0%	190	22.7%	287	29.0%	202	25.8%	343	31.8%
Children's Administration - Foster care	1,946	22.2%	780	21.2%	124	19.0%	113	16.8%	137	22.0%	127	17.8%	169	20.2%	191	19.3%	205	26.2%	215	19.9%
Inpatient Mental Health Services - All IP MH	1,535	17.5%	653	17.7%	92	14.1%	130	19.3%	120	19.2%	121	17.0%	144	17.2%	193	19.5%	141	18.0%	175	16.2%
Inpatient Mental Health Services - Non-CLIP	1,418	16.2%	595	16.1%	85	13.0%	118	17.5%	111	17.8%	117	16.4%	130	15.6%	175	17.7%	122	15.6%	168	15.6%
Juvenile justice (JR, arrests, charges, convic.)	1,380	15.7%	458	12.4%	120	18.4%	98	14.5%	105	16.8%	106	14.9%	119	14.2%	120	12.1%	97	12.4%	122	11.3%
Children's Administration - BRS	1,027	11.7%	395	10.7%	62	9.5%	61	9.1%	90	14.4%	64	9.0%	81	9.7%	102	10.3%	123	15.7%	89	8.2%
Substance use disorder services	644	7.3%	238	6.5%	50	7.7%	44	6.5%	44	7.1%	43	6.0%	59	7.1%	69	7.0%	50	6.4%	60	5.6%
Developmental Disabilities Administration	492	5.6%	225	6.1%	34	5.2%	35	5.2%	39	6.3%	37	5.2%	36	4.3%	67	6.8%	62	7.9%	60	5.6%
Inpatient Mental Health Services - CLIP	235	2.7%	124	3.4%	12	1.8%	19	2.8%	20	3.2%	15	2.1%	30	3.6%	42	4.3%	32	4.1%	20	1.9%
<b>TOTAL with linked data available</b>	<b>8,764</b>	<b>100%</b>	<b>3,686</b>	<b>100%</b>	<b>652</b>	<b>100%</b>	<b>674</b>	<b>100%</b>	<b>624</b>	<b>100%</b>	<b>713</b>	<b>100%</b>	<b>836</b>	<b>100%</b>	<b>988</b>	<b>100%</b>	<b>782</b>	<b>100%</b>	<b>1,080</b>	<b>100%</b>
<b>TOTAL</b>	<b>8,780</b>		<b>3,693</b>		<b>652</b>		<b>675</b>		<b>625</b>		<b>715</b>		<b>836</b>		<b>989</b>		<b>784</b>		<b>1,084</b>	

NOTES: The most recent complete quarter of data for screen referral sources is 1/18-3/18. The most recent quarter of data for services in the 12 months before screen is 10/17-12/17. As such, time periods are defined differently for the upper and lower tables. Please note that due to the transition in DBHR data systems, the SUD services indicator may be incomplete for time periods past 3/16.

# WISe Screening Report

JULY 2018

## Screens by Region

Duplicated Screens

### Referral Source for WISe Screen

SOURCE: BHAS

Referral Source for WISe Screen	Great Rivers				Greater Columbia				King County				North Central				North Sound			
	Cumulative 07/14-03/18		Last 12 months 04/17-03/18		Cumulative 07/14-03/18		Last 12 months 04/17-03/18		Cumulative 07/14-03/18		Last 12 months 04/17-03/18		Cumulative 07/14-03/18		Last 12 months 04/17-03/18		Cumulative 07/14-03/18		Last 12 months 04/17-03/18	
	N	PCT	N	PCT	N	PCT	N	PCT	N	PCT	N	PCT	N	PCT	N	PCT	N	PCT	N	PCT
MH-Outpatient/BHO	173	33.4%	75	26.7%	557	26.4%	123	18.0%	184	37.9%	132	40.6%	112	57.7%	60	45.5%	1,154	70.5%	385	61.7%
Self and Family	82	15.8%	52	18.5%	295	14.0%	95	13.9%	32	6.6%	23	7.1%	16	8.2%	15	11.4%	163	10.0%	75	12.0%
Children's Administration	54	10.4%	26	9.3%	315	14.9%	115	16.8%	86	17.7%	76	23.4%	9	4.6%	8	6.1%	204	12.5%	122	19.6%
School	40	7.7%	19	6.8%	154	7.3%	82	12.0%	52	10.7%	31	9.5%	24	12.4%	20	15.2%	23	1.4%	12	1.9%
Other	29	5.6%	20	7.1%	119	5.6%	42	6.1%	47	9.7%	21	6.5%	3	1.5%	3	2.3%	8	0.5%	2	0.3%
MH-Crisis Services	15	2.9%	11	3.9%	237	11.2%	55	8.0%	10	2.1%	3	0.9%	4	2.1%	3	2.3%	5	0.3%	1	0.2%
MH-Inpatient/Non-CLIP	10	1.9%	3	1.1%	80	3.8%	28	4.1%	4	0.8%	4	1.2%	1	0.5%	1	0.8%	18	1.1%	2	0.3%
MH-Outpatient/Non-BHO	19	3.7%	15	5.3%	13	0.6%	3	0.4%	5	1.0%	0	0.0%	17	8.8%	17	12.9%	4	0.2%	2	0.3%
Medical Provider	41	7.9%	30	10.7%	27	1.3%	14	2.0%	4	0.8%	3	0.9%	0	0.0%	0	0.0%	19	1.2%	9	1.4%
MH-Other	15	2.9%	7	2.5%	86	4.1%	26	3.8%	32	6.6%	13	4.0%	2	1.0%	2	1.5%	4	0.2%	2	0.3%
Community Organization	6	1.2%	5	1.8%	50	2.4%	25	3.7%	6	1.2%	2	0.6%	0	0.0%	0	0.0%	5	0.3%	1	0.2%
Juvenile Justice/non-JJRA	7	1.4%	5	1.8%	96	4.5%	46	6.7%	3	0.6%	1	0.3%	0	0.0%	0	0.0%	5	0.3%	2	0.3%
MH-Inpatient/CLIP	6	1.2%	1	0.4%	10	0.5%	4	0.6%	11	2.3%	9	2.8%	3	1.5%	3	2.3%	21	1.3%	8	1.3%
Juvenile Justice/JJRA	12	2.3%	5	1.8%	58	2.7%	20	2.9%	0	0.0%	0	0.0%	3	1.5%	0	0.0%	1	0.1%	1	0.2%
Chemical Dependency Provider	6	1.2%	6	2.1%	3	0.1%	1	0.1%	1	0.2%	0	0.0%	0	0.0%	0	0.0%	0	0.0%	0	0.0%
Developmental Disabilities Administration	0	0.0%	0	0.0%	7	0.3%	1	0.1%	7	1.4%	7	2.2%	0	0.0%	0	0.0%	0	0.0%	0	0.0%
MH-Tribal	3	0.6%	1	0.4%	4	0.2%	4	0.6%	1	0.2%	0	0.0%	0	0.0%	0	0.0%	2	0.1%	0	0.0%
Missing	0	0.0%	0	0.0%	0	0.0%	0	0.0%	0	0.0%	0	0.0%	0	0.0%	0	0.0%	0	0.0%	0	0.0%
<b>TOTAL</b>	<b>518</b>	<b>100%</b>	<b>281</b>	<b>100%</b>	<b>2,111</b>	<b>100%</b>	<b>684</b>	<b>100%</b>	<b>485</b>	<b>100%</b>	<b>325</b>	<b>100%</b>	<b>194</b>	<b>100%</b>	<b>132</b>	<b>100%</b>	<b>1,636</b>	<b>100%</b>	<b>624</b>	<b>100%</b>

### Services 12 Months Before Screen

SOURCE: Admin data, except BHAS education items

Services 12 Months Before Screen	Cumulative 07/14-12/17		Last 12 months 01/17-12/17		Cumulative 07/14-12/17		Last 12 months 01/17-12/17		Cumulative 07/14-12/17		Last 12 months 01/17-12/17		Cumulative 07/14-12/17		Last 12 months 01/17-12/17		Cumulative 07/14-12/17		Last 12 months 01/17-12/17	
	N	PCT	N	PCT	N	PCT	N	PCT	N	PCT	N	PCT	N	PCT	N	PCT	N	PCT	N	PCT
	DBHR Outpatient Mental Health Services	412	95.8%	223	94.1%	1,722	90.2%	594	88.5%	371	93.7%	268	92.4%	151	96.8%	105	96.3%	1,404	99.2%	516
Children's Administration - Any service	262	60.9%	147	62.0%	1,193	62.5%	414	61.7%	281	71.0%	200	69.0%	96	61.5%	66	60.6%	940	66.4%	342	65.3%
Special education [BHAS data]	219	50.9%	117	49.4%	821	43.0%	282	42.0%	300	75.8%	226	77.9%	59	37.8%	43	39.4%	817	57.7%	308	58.8%
HCA/Tribal OP MH Services	145	33.7%	72	30.4%	715	37.5%	256	38.2%	134	33.8%	106	36.6%	61	39.1%	41	37.6%	591	41.8%	231	44.1%
School-based behavioral health [BHAS data]	167	38.8%	102	43.0%	268	14.0%	111	16.5%	80	20.2%	50	17.2%	75	48.1%	53	48.6%	486	34.3%	210	40.1%
Children's Administration - Foster care	64	14.9%	39	16.5%	435	22.8%	165	24.6%	89	22.5%	73	25.2%	28	17.9%	19	17.4%	262	18.5%	93	17.7%
Inpatient Mental Health Services - All IP MH	49	11.4%	17	7.2%	369	19.3%	80	11.9%	80	20.2%	65	22.4%	21	13.5%	19	17.4%	335	23.7%	129	24.6%
Inpatient Mental Health Services - Non-CLIP	45	10.5%	16	6.8%	355	18.6%	74	11.0%	76	19.2%	63	21.7%	19	12.2%	17	15.6%	315	22.3%	121	23.1%
Juvenile justice (JR, arrests, charges, convic.)	46	10.7%	24	10.1%	366	19.2%	107	15.9%	29	7.3%	26	9.0%	24	15.4%	14	12.8%	167	11.8%	41	7.8%
Children's Administration - BRS	13	3.0%	7	3.0%	229	12.0%	91	13.6%	43	10.9%	39	13.4%	4	2.6%	4	3.7%	136	9.6%	45	8.6%
Substance use disorder services	30	7.0%	21	8.9%	163	8.5%	57	8.5%	15	3.8%	13	4.5%	6	3.8%	6	5.5%	87	6.1%	27	5.2%
Developmental Disabilities Administration	18	4.2%	13	5.5%	90	4.7%	31	4.6%	42	10.6%	33	11.4%	5	3.2%	3	2.8%	100	7.1%	53	10.1%
Inpatient Mental Health Services - CLIP	7	1.6%	1	0.4%	21	1.1%	9	1.3%	11	2.8%	9	3.1%	6	3.8%	6	5.5%	44	3.1%	15	2.9%
<b>TOTAL with linked data available</b>	<b>430</b>	<b>100%</b>	<b>237</b>	<b>100%</b>	<b>1,909</b>	<b>100%</b>	<b>671</b>	<b>100%</b>	<b>396</b>	<b>100%</b>	<b>290</b>	<b>100%</b>	<b>156</b>	<b>100%</b>	<b>109</b>	<b>100%</b>	<b>1,415</b>	<b>100%</b>	<b>524</b>	<b>100%</b>
<b>TOTAL</b>	<b>430</b>		<b>237</b>		<b>1,912</b>		<b>672</b>		<b>398</b>		<b>291</b>		<b>156</b>		<b>109</b>		<b>1,416</b>		<b>525</b>	

NOTES: The most recent complete quarter of data for screen referral sources is 1/18-3/18. The most recent quarter of data for services in the 12 months before screen is 10/17-12/17. As such, time periods are defined differently for the upper and lower tables. Please note that due to the transition in DBHR data systems, the SUD services indicator may be incomplete for time periods past 3/16.

# WISe Screening Report

JULY 2018

## Screens by Region (cont.)

Duplicated Screens

Referral Source for WISe Screen SOURCE: BHAS	Pierce County				Salish				Southwest				Spokane Region				Thurston Mason			
	Cumulative 07/14-03/18		Last 12 months 04/17-03/18		Cumulative 07/14-03/18		Last 12 months 04/17-03/18		Cumulative 07/14-03/18		Last 12 months 04/17-03/18		Cumulative 07/14-03/18		Last 12 months 04/17-03/18		Cumulative 07/14-03/18		Last 12 months 04/17-03/18	
	N	PCT	N	PCT	N	PCT	N	PCT	N	PCT	N	PCT	N	PCT	N	PCT	N	PCT	N	PCT
MH-Outpatient/BHO	78	5.6%	12	2.8%	180	47.0%	107	44.2%	163	16.2%	1	0.3%	367	35.9%	237	31.1%	280	20.2%	104	25.5%
Self and Family	985	71.0%	346	81.4%	25	6.5%	19	7.9%	183	18.2%	62	19.4%	127	12.4%	112	14.7%	248	17.9%	72	17.6%
Children's Administration	158	11.4%	24	5.6%	27	7.0%	24	9.9%	166	16.5%	48	15.0%	102	10.0%	94	12.3%	204	14.8%	87	21.3%
School	6	0.4%	2	0.5%	6	1.6%	4	1.7%	37	3.7%	10	3.1%	106	10.4%	88	11.5%	174	12.6%	44	10.8%
Other	38	2.7%	1	0.2%	12	3.1%	12	5.0%	55	5.5%	18	5.6%	42	4.1%	33	4.3%	129	9.3%	5	1.2%
MH-Crisis Services	6	0.4%	3	0.7%	1	0.3%	1	0.4%	93	9.2%	34	10.6%	28	2.7%	17	2.2%	79	5.7%	27	6.6%
MH-Inpatient/Non-CLIP	4	0.3%	0	0.0%	82	21.4%	48	19.8%	17	1.7%	11	3.4%	72	7.1%	46	6.0%	8	0.6%	4	1.0%
MH-Outpatient/Non-BHO	11	0.8%	6	1.4%	35	9.1%	20	8.3%	166	16.5%	86	26.9%	22	2.2%	19	2.5%	2	0.1%	0	0.0%
Medical Provider	14	1.0%	7	1.6%	0	0.0%	0	0.0%	77	7.6%	28	8.8%	22	2.2%	16	2.1%	71	5.1%	20	4.9%
MH-Other	13	0.9%	1	0.2%	2	0.5%	2	0.8%	9	0.9%	7	2.2%	58	5.7%	42	5.5%	49	3.5%	12	2.9%
Community Organization	20	1.4%	0	0.0%	0	0.0%	0	0.0%	5	0.5%	2	0.6%	9	0.9%	6	0.8%	61	4.4%	8	2.0%
Juvenile Justice/non-JJRA	6	0.4%	1	0.2%	1	0.3%	0	0.0%	13	1.3%	5	1.6%	4	0.4%	4	0.5%	21	1.5%	10	2.5%
MH-Inpatient/CLIP	40	2.9%	21	4.9%	6	1.6%	3	1.2%	8	0.8%	2	0.6%	39	3.8%	28	3.7%	8	0.6%	3	0.7%
Juvenile Justice/JJRA	7	0.5%	1	0.2%	5	1.3%	2	0.8%	6	0.6%	2	0.6%	12	1.2%	10	1.3%	29	2.1%	5	1.2%
Chemical Dependency Provider	0	0.0%	0	0.0%	0	0.0%	0	0.0%	1	0.1%	1	0.3%	10	1.0%	10	1.3%	7	0.5%	3	0.7%
Developmental Disabilities Administration	0	0.0%	0	0.0%	0	0.0%	0	0.0%	8	0.8%	3	0.9%	0	0.0%	0	0.0%	3	0.2%	3	0.7%
MH-Tribal	1	0.1%	0	0.0%	1	0.3%	0	0.0%	1	0.1%	0	0.0%	1	0.1%	0	0.0%	9	0.7%	1	0.2%
Missing	0	0.0%	0	0.0%	0	0.0%	0	0.0%	0	0.0%	0	0.0%	0	0.0%	0	0.0%	1	0.1%	0	0.0%
<b>TOTAL</b>	<b>1,387</b>	<b>100%</b>	<b>425</b>	<b>100%</b>	<b>383</b>	<b>100%</b>	<b>242</b>	<b>100%</b>	<b>1,008</b>	<b>100%</b>	<b>320</b>	<b>100%</b>	<b>####</b>	<b>100%</b>	<b>762</b>	<b>100%</b>	<b>1,383</b>	<b>100%</b>	<b>408</b>	<b>100%</b>

## Services 12 Months Before Screen

SOURCE: Admin data, except BHAS education items

	Cumulative 07/14-12/17		Last 12 months 01/17-12/17		Cumulative 07/14-12/17		Last 12 months 01/17-12/17		Cumulative 07/14- 12/17		Last 12 months 01/17-12/17		Cumulative 07/14-12/17		Last 12 months 01/17-12/17		Cumulative 07/14-12/17		Last 12 months 01/17-12/17	
	N	PCT	N	PCT	N	PCT	N	PCT	N	PCT	N	PCT	N	PCT	N	PCT	N	PCT	N	PCT
	DBHR Outpatient Mental Health Services	1,111	88.0%	386	91.0%	290	98.3%	177	97.3%	523	59.1%	52	18.2%	703	93.2%	519	91.5%	1,084	85.9%	323
Children's Administration - Any service	863	68.4%	246	58.0%	173	58.6%	103	56.6%	533	60.2%	150	52.6%	489	64.9%	371	65.4%	733	58.1%	233	58.7%
Special education [BHAS data]	552	43.7%	182	42.9%	149	50.5%	93	51.1%	486	54.9%	160	56.1%	414	54.9%	295	52.0%	493	39.1%	168	42.3%
HCA/Tribal OP MH Services	429	34.0%	159	37.5%	73	24.7%	51	28.0%	542	61.2%	251	88.1%	381	50.5%	274	48.3%	338	26.8%	112	28.2%
School-based behavioral health [BHAS data]	199	15.8%	70	16.5%	123	41.7%	74	40.7%	189	21.4%	35	12.3%	344	45.6%	261	46.0%	213	16.9%	56	14.1%
Children's Administration - Foster care	352	27.9%	78	18.4%	69	23.4%	47	25.8%	256	28.9%	63	22.1%	126	16.7%	103	18.2%	265	21.0%	100	25.2%
Inpatient Mental Health Services - All IP MH	170	13.5%	88	20.8%	99	33.6%	57	31.3%	71	8.0%	23	8.1%	230	30.5%	143	25.2%	111	8.8%	32	8.1%
Inpatient Mental Health Services - Non-CLIP	136	10.8%	66	15.6%	96	32.5%	55	30.2%	63	7.1%	20	7.0%	212	28.1%	132	23.3%	101	8.0%	31	7.8%
Juvenile justice (JR, arrests, charges, convic.)	242	19.2%	68	16.0%	49	16.6%	29	15.9%	129	14.6%	26	9.1%	98	13.0%	66	11.6%	230	18.2%	57	14.4%
Children's Administration - BRS	202	16.0%	41	9.7%	51	17.3%	31	17.0%	145	16.4%	34	11.9%	64	8.5%	56	9.9%	140	11.1%	47	11.8%
Substance use disorder services	95	7.5%	27	6.4%	18	6.1%	5	2.7%	62	7.0%	18	6.3%	31	4.1%	23	4.1%	137	10.9%	41	10.3%
Developmental Disabilities Administration	80	6.3%	22	5.2%	10	3.4%	4	2.2%	40	4.5%	16	5.6%	52	6.9%	33	5.8%	55	4.4%	17	4.3%
Inpatient Mental Health Services - CLIP	64	5.1%	41	9.7%	6	2.0%	3	1.6%	9	1.0%	3	1.1%	46	6.1%	31	5.5%	21	1.7%	6	1.5%
<b>TOTAL with linked data available</b>	<b>1,262</b>	<b>100%</b>	<b>424</b>	<b>100%</b>	<b>295</b>	<b>100%</b>	<b>182</b>	<b>100%</b>	<b>885</b>	<b>100%</b>	<b>285</b>	<b>100%</b>	<b>754</b>	<b>100%</b>	<b>567</b>	<b>100%</b>	<b>1,262</b>	<b>100%</b>	<b>397</b>	<b>100%</b>
<b>TOTAL</b>	<b>1,263</b>		<b>424</b>		<b>295</b>		<b>182</b>		<b>888</b>		<b>286</b>		<b>755</b>		<b>568</b>		<b>1,267</b>		<b>399</b>	

NOTES: The most recent complete quarter of data for screen referral sources is 1/18-3/18. The most recent quarter of data for services in the 12 months before screen is 10/17-12/17. As such, time periods are defined differently for the upper and lower tables. Please note that due to the transition in DBHR data systems, the SUD services indicator may be incomplete for time periods past 3/16.