

## CLINICAL DATA REPOSITORY

### Advancing Health Information Exchange Beyond Organizational EHRs

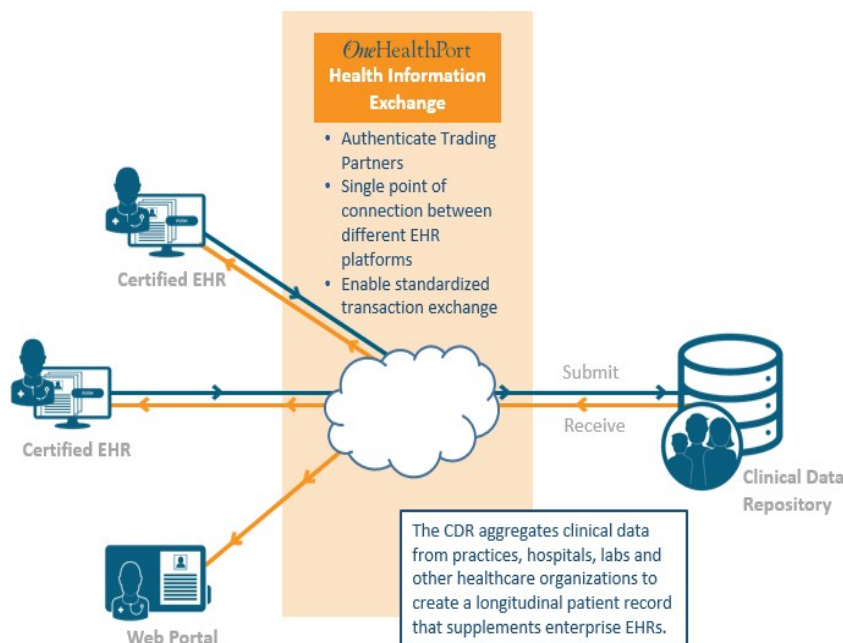
*“We will have failed those we serve if we don’t overcome the interoperability challenges that make it difficult to deliver connected and coordinated care.”*

The Link4Health Clinical Data Repository (CDR) is a direct response by the Washington State Health Care Authority (HCA) to the interoperability challenges identified by the community in a recent RFI solicitation and feedback to the meaningful use program. The CDR connects disparate EHR platforms and aggregates clinical information in one easily accessible location. Practitioners who take care of Apple Health Managed Care enrollees can import data from the CDR into their EHR and then view it using their standard workflow. By providing access to clinical information from outside the enterprise, the CDR helps the care team gain a more comprehensive understanding of the patient’s medical history. This enables clinicians to achieve better results for their patients and improve overall community health.

### Key Features

- Leverages standards (C-CDA) for sharing clinical summaries already incorporated into certified EHRs
- Submitting standardized clinical summary documents to the CDR meets the Meaningful Use Stage 2 requirement for exchanging care summaries with organizations with different EHR systems
- Supports clinical data exchange with organizations that do not share similar platforms
- Supports access to integrated patient record without an EHR through a clinical portal
- Offers a common place to share information for those participating in different arrangements such as Accountable Care Organizations (ACO) or Managed Care Organizations (MCO)
- Provides mainstream reporting and analytics capabilities with custom and pre-configured reports (i.e., HEDIS, PQRS) for the practitioner and the practice across the MCOs
- Reduces the need for chart reviews associated with quality reporting

### How It Works



- 1) Provider organization’s certified EHR is connected to the OneHealthPort HIE using standard protocols
- 2) The provider EHR pushes a standardized clinical summary document – the Consolidated-Clinical Document Architecture (C-CDA) to the CDR through the HIE after each encounter with an Apple Health patient
- 3) The clinical documents for that patient are aggregated in the CDR
- 4) As the CDR gains critical mass, it will be possible for the provider to query the CDR through their EHR/HIE connection, the CDR will then send any relevant information on that patient to the provider’s EHR before the provider sees the patient
- 5) Using their standard EHR workflows, the provider will have access to the most current and comprehensive information on that patient at the point of care
- 6) A secure web portal is offered for clinical organizations to query the CDR for patient records if they lack an EHR

**How Much Does it Cost?**

Provider organizations that participate in the CDR must join the OneHealthPort HIE to establish a trust framework and securely exchange information. The cost to the provider organization to join the HIE is an annual subscription fee based on the organization’s annual net patient revenue. The CDR leverages the standards already present in certified EHRs. EHR vendors’ readiness to output a C-CDA may vary. Providers should confirm what, if any, additional fees their EHR vendors may charge.

Organization Level	Annual Net Patient Revenue	Annual Subscription Fee
Entry	\$0 - \$10 Million	\$600
Small	\$10 Million - \$100 Million	\$6,000
Mid-size	\$100 Million - \$500 Million	\$12,000
Large	\$500 Million - \$1 Billion	\$24,000
Leadership	\$1 Billion Plus	\$48,000

The cost of the CDR itself is covered by the Health Care Authority, Centers for Medicare and Medicaid Services, and the Managed Care Organizations. There is no cost to the provider organization. Going forward, other organizations may also elect to sponsor use of the CDR for their patient populations.

**Privacy and Security**

The CDR complies with state and federal security and privacy requirements and is externally audited for HIPAA and SOC2 (Service Operation Center) national standards. Specific data access policies are determined by HCA as the CDR sponsor, and administered by OneHealthPort.

**Participation Requirements and Options**

No later than February 1, 2017, provider organizations with certified EHRs that see Apple Health Managed Care enrollees must begin submitting clinical summaries from the provider’s EHR to the Link4Health CDR after each visit.

Prior to February 1, 2017, the Health Care Authority is looking for provider organizations willing to be early adopters of the Link4Health CDR. The CDR goes live in early 2016. Organizations are encouraged to sign up for participation early to allow time to work with staff and vendors for set-up of the C-CDA data submissions.

**Next Steps**

To learn more about the CDR and Link4Health, visit [www.HealthIT.wa.gov](http://www.HealthIT.wa.gov).

To learn more about the HIE or to get connected to the CDR, email [HIE@onehealthport.com](mailto:HIE@onehealthport.com).