

## Uniform Dental Plan (UDP)

Group #09600

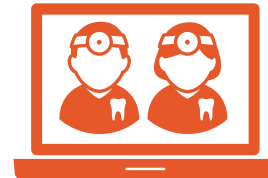
### THIS IS THE DELTA DENTAL PPO PLAN

*Best for those who want the freedom to choose their favorite dentist*

- You pick your dentist from the largest provider networks: state and national
- Get specialist care without a referral
- Deductible waived for preventive care - you pay \$0
- Deductible & coinsurance apply for other treatments
- Coverage for out-of-network care

Visit a Delta Dental PPO<sup>SM</sup> network dentist to receive services at discounted rates and avoid balance-billing.

Check that your dentist is in-network or find a new PPO dentist:



1. Visit [DeltaDentalWA.com](https://www.DeltaDentalWA.com)
2. Click on *Online Tools* and use our *Find a Dentist* tool.
3. Select *Delta Dental PPO* to filter your search results.
4. Contact the dental office to confirm they're accepting new patients.



### HELPFUL ONLINE TOOLS

Activate your MySmile<sup>®</sup> account online at [DeltaDentalWA.com](https://www.DeltaDentalWA.com). Use it to:

- > Print your ID card.
- > View your coverage.
- > Get instant out-of-pocket cost estimates with MySmile Cost Genie<sup>®</sup>.
- > Endorse your favorite dentist and help other patients find theirs.
- > Review your Explanation of Benefits (EOB).

# UDP Benefits and Costs

## ANNUAL COSTS

**Deductible** \$50/person  
-amount you pay before your plan pays \$150/family

**Plan maximum**  
-amount your plan pays towards the cost of your dental care during the plan year \$1,750

## YOU PAY AFTER DEDUCTIBLE

(coinsurance amounts below for providers in the PPO network)

Cleaning and exam every 6 months	0%
Fluoride treatment	0%
Complete x-rays every 5 years	0%
Fillings	20%
Crowns	50%
Root canals (endodontics)	20%
Treatment of gum disease (periodontics)	20%
Tooth extractions	20%
Orthodontia	50% until plan has paid \$1,750; then any amount over \$1,750 in the member's lifetime (maximum lifetime benefit)
Implants	50%
Dentures	50%
Nonsurgical TMJ	30% of costs until the plan has paid \$500 (for PPO, out of state, and non-PPO providers); then any amount over \$500 in the member's lifetime (maximum lifetime benefit)

*This is a summary of SEBB UDP plan benefits. Please review the SEBB UDP certificate of coverage at [DeltaDentalWA.com/sebb](http://DeltaDentalWA.com/sebb) for more information before selecting your plan.*



### RESPONSIVE, LOCAL SERVICE

Our customer service representatives are dental benefits experts located in Washington. You can count on us for fast, helpful service.

Questions? Call (800) 537-3406. We're happy to help. [DeltaDentalWA.com/sebb](http://DeltaDentalWA.com/sebb)