

Uniform Dental Plan (UDP)

Group #03000

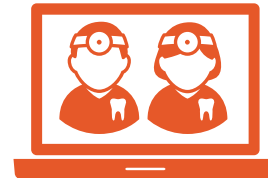
THIS IS THE DELTA DENTAL PPO PLAN

*Best for those who want the freedom to
choose their favorite dentist*

- You pick your dentist from the largest provider networks: state and national
- Get specialist care without a referral
- Deductible waived for preventive care - you pay \$0
- Deductible & coinsurance apply for other treatments
- Coverage for out-of-network care

Visit a Delta Dental PPOSM network dentist to receive services at discounted rates and avoid balance-billing.

Check that your dentist is in-network or find a new PPO dentist:



1. Visit [DeltaDentalWA.com](https://www.DeltaDentalWA.com)
2. Click on *Online Tools* and use our *Find a Dentist* tool.
3. Select *Delta Dental PPO* to filter your search results.
4. Contact the dental office to confirm they're accepting new patients.



HELPFUL ONLINE TOOLS

Activate your MySmile[®] account online at [DeltaDentalWA.com](https://www.DeltaDentalWA.com). Use it to:

- > Print your ID card.
- > View your coverage.
- > Get instant out-of-pocket cost estimates with MySmile Cost Genie[®].
- > Endorse your favorite dentist and help other patients find theirs.
- > Review your Explanation of Benefits (EOB).

UDP Benefits and Costs

ANNUAL COSTS

Deductible \$50/person
-amount you pay before your plan pays \$150/family

Plan maximum
-amount your plan pays towards the cost of your dental care during the plan year \$1,750

YOU PAY AFTER DEDUCTIBLE

(coinsurance amounts below for providers in the PPO network)

Cleaning and exam every 6 months	0%
Fluoride treatment	0%
Complete x-rays every 5 years	0%
Fillings	20%
Crowns	50%
Root canals (endodontics)	20%
Treatment of gum disease (periodontics)	20%
Tooth extractions	20%
Orthodontia	50% until plan has paid \$1,750; then any amount over \$1,750 in the member's lifetime (maximum lifetime benefit)
Implants	50%
Dentures	50%
Nonsurgical TMJ	30% of costs until the plan has paid \$500 (for PPO, out of state, and non-PPO providers); then any amount over \$500 in the member's lifetime (maximum lifetime benefit)

This is a summary of PEBB UDP plan benefits. Please review the PEBB UDP certificate of coverage at DeltaDentalWA.com/pebb for more information about your plan.



RESPONSIVE, LOCAL SERVICE

Our customer service representatives are dental benefits experts located in Washington. You can count on us for fast, helpful service.

Questions? Call (800) 537-3406. We're happy to help. DeltaDentalWA.com/pebb