

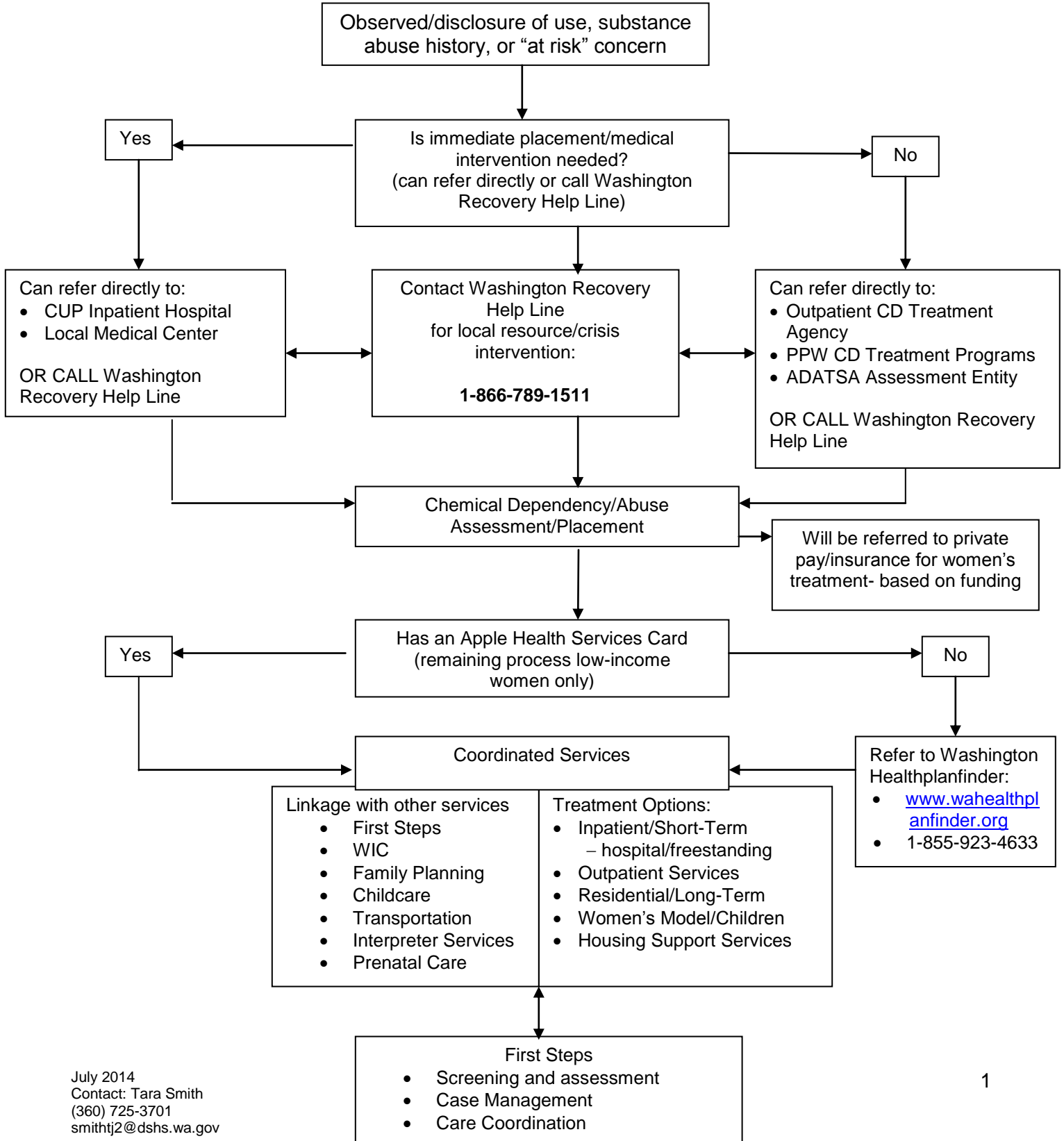
**PREGNANT WOMEN  
SUBSTANCE USE DISORDER  
RESOURCE GUIDE**

**July 2014**

**Washington State**

**Partnership of  
Department of Social & Health Services  
Department of Health  
Health Care Authority**

# PREGNANT WOMEN CHEMICAL DEPENDENCY/ABUSE TREATMENT ACCESS MATRIX



# **PREGNANT WOMEN CHEMICAL DEPENDENCY/ABUSE TREATMENT ACCESS MATRIX KEY**

**APPLE HEALTH SERVICES CARD:** Washington Apple Health (Medicaid) issues Services Cards to clients who are eligible to receive medical services. Providers can verify a client's eligibility using the information provided on the Services Card.

**CD/WOMEN'S TREATMENT AGENCY:** Substance use disorder treatment services certified by DSHS's Division of Behavioral Health and Recovery (DBHR), listed in DBHR's service directory with focus on Women's Programs. PPW = Pregnant and Parenting Women

**SUBSTANCE USE DISORDER:** A problematic pattern of substance use leading to clinically significant impairment or distress, ranging in severity from mild, moderate or severe.

**SUBSTANCE USE DISORDER ASSESSMENT:** Diagnostic services to determine a person's involvement with alcohol and other drugs and to recommend a course of action.

**CHEMICAL USE:** Ingestion of psychoactive chemicals or pattern of psychoactive chemical use by any family member. Use patterns are characterized by continued use despite knowledge of having persistent or recurring social, occupational, psychological or physical problems that are caused by use.

**CHILDCARE:** DSHS managed childcare services provided in support of substance use disorder treatment; medical care appointments, foster care, employment, or other approved needs.

**COMMUNITY SERVICE OFFICE:** Statewide Community Services Offices (CSO) assist clients in applying for, reporting changes, or renewing food, cash, or child care. . CSO's also assist with medical for disabled individuals, long-term care and Medicare savings programs.

**CHEMICAL-USING PREGNANT (CUP) WOMEN PROGRAM:** HCA inpatient hospital program at pre-approved hospitals statewide providing acute medical detoxification and stabilization of a pregnant woman who has a substance use disorder.

**WITHDRAWAL MANAGEMENT:** Care and treatment in a residential or hospital setting of persons intoxicated or incapacitated by alcohol or other drugs during the period in which the person is recovering from the transitory effects of intoxication or withdrawal. Acute detox provides medical care and physician supervision, sub-acute detox is non-medical.

**FAMILY PLANNING:** Family Planning and reproductive health services and products for eligible clients.

**FIRST STEPS (MATERNITY SUPPORT SERVICES (MSS), INFANT CASE MANAGEMENT (ICM), CHILDBIRTH EDUCATION (CBE)):** MSS delivers enhanced preventive health and education services and brief interventions to eligible pregnant women. Services are provided as early in a pregnancy as possible and are based on the client's individual risks and needs. Any history or risk of substance use disorder qualifies Apple Health (Medicaid) eligible pregnant women for MSS services.

**INTENSIVE INPATIENT TREATMENT:** Residential inpatient primary alcohol/drug treatment program in a non-medical facility (freestanding) for up to 30 days. Consist of therapy, education, and activities for detoxified alcoholics and addicts, and their families.

**OUTPATIENT SERVICES:** Individual and group treatment services of varied duration and intensity for patients with substance use disorder, less than 24 hours a day in a non residential setting.

**RESIDENTIAL/LONG TERM WOMEN'S MODEL:** Substance use disorder residential treatment program with personal care services for chronic need of long term services over 90 days. Gender specific women's programs offer the capacity to have children reside with parent, and focus on women's personal issues needed to maintain abstinence, independence, & health. **WASHINGTON HEALTH PLAN FINDER:** Online marketplace for individuals, families and small businesses in Washington State to compare and enroll in free or low cost quality health insurance plans. [www.wahealthplanfinder.org](http://www.wahealthplanfinder.org) or 1-855-923-4633

**WASHINGTON RECOVERY HELP LINE:** Confidential 24 hour statewide telephone service to assist with alcohol/drug related crisis intervention, guidance, information and referrals to community resources. 1-866-789-1511

**WIC:** Women, Infants & Children's Supplemental Food Program provides food vouchers and education to pregnant low-income women and children up to age five.

**1 in 10 Pregnant Women Use Drugs During Pregnancy**

# PREGNANT WOMEN CHEMICAL DEPENDENCY/ABUSE TREATMENT RESOURCE GUIDE

## PHONE NUMBERS FOR INFORMATION & PROVIDERS

### Health Care Authority (HCA)

#### Medical Assistance

- Washington Apple Health (Medicaid) 1-800-562-3022
- Family Planning/TAKE CHARGE 1-360-725-1652
- Emergency Contraception Line 1-888-668-2528
- First Steps (MSS/ICM/CBE) 1-360-725-1293 or [firststeps@hca.wa.gov](mailto:firststeps@hca.wa.gov)
- Non-Emergency Medical Transportation [HCANEMTTRANS@hca.wa.gov](mailto:HCANEMTTRANS@hca.wa.gov)
- Provider Inquiry 1-800-562-3022

### Department of Social & Health Services (DSHS)

#### Division of Behavioral Health and Recovery (DBHR) Chemical Dependency and Mental Health

- Washington Recovery Help Line 1-866-789-1511 or [recovery@crisisclinic.org](mailto:recovery@crisisclinic.org)
- DBHR Main Line 1-877-301-4557

#### Division of Children and Family Services (DCFS)

- Child or Adult Abuse & Neglect Report 1-866-363-4276
- Children's Services (DCFS) 1-800-562-5624
- Child Care Resource & Referral 1-800-446-1114
- Children's Response Line 1-800-333-8185

### Other Agencies or Resources

- Department of Health (DOH) Hotline 1-800-525-0127
- Domestic Violence Hotline 1-800-562-6025
- NOFAS Washington 1-206-940-2832
- National Drug Information, Treatment & Referral Line 1-800-662-HELP  
24 Hr. 7 days a week – counsel for physicians,  
providers, clients, general calls with linkage  
to local contacts
- For Spanish-speaking callers 1-800-66-AYUDA
- Family Health Hotline 1-800-322-2588

# PREGNANT WOMEN CHEMICAL DEPENDENCY/ABUSE TREATMENT RESOURCE GUIDE

## WEB BASED RESOURCES & INFORMATION

These sites offer linkages that address chemical dependency/abuse issues of pregnant women, including provider contacts. The most current information can be located on the following web sites.

### Access Washington

- Communities Resource Directory

<http://access.wa.gov>

### Department of Health (DOH)

- Perinatal Substance Abuse Professional Education –Screening Guidelines

<http://www.doh.wa.gov>

### Department of Social & Health Services (DSHS)

- Community Services Office (CSO) Locator
  - Online CSO Locator <https://fortress.wa.gov/dshs/f2ws03esaapps/onlinecso/findservice.asp>
  - Online Application <https://www.washingtonconnection.org/home/>
  - Eligibility EA-Z Manual & Acronyms <http://www.dshs.wa.gov/manuals/eaz/>
- DSHS Forms Online <http://www1.dshs.wa.gov/msa/forms/>
- Research and Data Analysis (RDA) First Steps Database [http://www.dshs.wa.gov/onlinecso/first\\_steps.shtml](http://www.dshs.wa.gov/onlinecso/first_steps.shtml)
- Division of Behavioral Health and Recovery (DBHR) <http://www.dshs.wa.gov/DBHR/>
- Division of Children and Family Services (DFCS) <http://ca.dshs.wa.gov/intranet/main/camain.asp>

### Health Care Authority (HCA)

- Apple Health (Medicaid) <http://www.hca.wa.gov/medicaid/Pages/index.aspx>
- Family Planning [http://www.hca.wa.gov/medicaid/billing/pages/familyplanning\\_prov.aspx](http://www.hca.wa.gov/medicaid/billing/pages/familyplanning_prov.aspx)
- First Steps <http://www.hca.wa.gov/medicaid/firststeps/Pages/index.aspx>
- Interpreter Services <http://www.hca.wa.gov/medicaid/interpreterservices/Pages/index.aspx>
- Medical Providers <http://www.hca.wa.gov/medicaid/provider/Pages/index.aspx>
- Non-Emergency Transportation <http://www.hca.wa.gov/medicaid/transportation/Pages/index.aspx>
- Eligibility for Medical Programs <http://www.hca.wa.gov/medicaid/Eligibility/Pages/index.aspx>

### Fetal Alcohol Syndrome (FAS) Prevention and Education

- NOFAS Washington <http://www.nofaswa.org/>
- U.S Department of Health and Human Services/Administration for Children and Families/Children's Bureau Express <http://cbexpress.acf.hhs.gov/>
- FASD Center for Excellence <http://www.fascenter.samhsa.gov/>
- FASD Washington <http://www.fasdwa.org>

### National Women's Health Information Center for Drug Abuse/Mental Health

- Offers professional medical information, treatment, research, resources specific to women's chemical dependency/abuse [http://www.thebody.com/nwhic/drug\\_abuse.html](http://www.thebody.com/nwhic/drug_abuse.html)

### Washington Recovery Help Line

<http://warecoveryhelpline.org/>

### Other Resources

- Parent Help 123 - Within Reach <https://www.parenthelp123.org/>

# PREGNANT WOMEN CHEMICAL DEPENDENCY/ABUSE TREATMENT RESOURCE GUIDE

## Pregnant and Parenting Women (PPW) Residential Providers

[Evergreen Manor](#): Unit 1  
(Everett)  
(425) 258-2407

[Triumph Treatment Services](#): Casita  
(Yakima)  
(509) 248-1800

[Evergreen Manor](#): Unit 2  
(Everett)  
(425) 258-2407

[Triumph Treatment Services](#): Riel House  
(Yakima)  
(509) 248-1800

[Sundown M Ranch](#)  
(Selah)  
(509) 457-0990

[Triumph Treatment Services](#): Beth's Place  
(Yakima)  
(509) 248-1800

[Drug Abuse Prevention Center](#)  
(Longview)  
(360) 425-9210

**New Horizon Care Centers: Isabella House**  
(Spokane)  
(509) 624-1244

# PREGNANT WOMEN CHEMICAL DEPENDENCY/ABUSE TREATMENT RESOURCE GUIDE

## PPW Housing Support Services Providers

[Evergreen Manor](#)  
(Everett)  
(425) 258-2407

[Brigid Collins House](#)  
(Bellingham)  
(360) 734-4616

[Agape](#)  
(Bremerton)  
(360) 373-1529

[Triumph Treatment Services](#): Sage House  
(Yakima)  
(509) 248-1800

**New Horizon Care Centers**  
(Spokane)  
(509) 624-1244

[Triumph Treatment Services](#): Parkway Place  
(Yakima)  
(509) 248-1800

[Recovery Centers of King County](#)  
(Seattle)  
(206) 568-8231

[Catholic Community Services](#)  
(Everett)  
(425) 258-5277

[Drug Abuse Prevention Center](#)  
(Longview)  
(360) 425-9210

# **PREGNANT WOMEN CHEMICAL DEPENDENCY/ABUSE TREATMENT RESOURCE GUIDE**

## **Chemical Using Pregnant (CUP) Providers**

The CUP Women's program is an inpatient, up to 26 day, hospital-based program for Medicaid eligible women. Services include immediate access to care, acute and sub-acute medical detoxification, and stabilization for the pregnant mother and her fetus, and related chemical dependency treatment services and referral.

### **[Grays Harbor Community Hospital / Eastcenter Recovery Alcohol and Drug Unit](#)**

(360) 537-6258  
Grays Harbor County

### **[Swedish Medical Center/Ballard Community Hospital Addiction Recovery Services](#)**

(206) 781-6048  
King County

### **[Highline Medical Center/Specialty Campus](#)**

(206) 248-4787 or (877) 762-3795  
King County

### **[Providence General Medical Center/Providence Recovery Program - Behavioral Health Services](#)**

(425) 258-7390  
Snohomish County

### **[St. Peter Hospital/St. Peter Chemical Dependency Center](#)**

(360) 456-7575 or (800) 332-0465  
Thurston County

### **[Valley General Hospital](#)**

(360) 794-7497  
Snohomish County



# PREGNANT WOMEN CHEMICAL DEPENDENCY/ABUSE TREATMENT RESOURCE GUIDE

## Parent Child Assistance Program (PCAP)

PCAP is an evidence-based home visitation case-management model for mothers who abuse alcohol or drugs during pregnancy. Its goals are to help mothers build healthy families and prevent future births of children exposed prenatally to alcohol and drugs.

### [King County](#)

(206) 323-9136

### [Grant County](#)

(509) 765-5402

### [Pierce County](#)

(253) 475-0623

### [Yakima County](#)

(509) 248-1800

### [Spokane County](#)

(509) 838-6092

### [Cowlitz County](#)

(360) 425-9600

### [Skagit County](#)

(360) 428-7835

### [Grays Harbor County](#)

(360) 249-0005

### [Clallam County](#)

(360) 457-8355

### [Kitsap County](#)

(360) 373-1529

### [Clark County](#)

(360) 448-2121

## Safe Babies Safe Moms (SBSM)

SBSM is a comprehensive program for Medicaid eligible substance abusing pregnant and parenting women with children under the age of three. Services available in cooperation with other publicly funded services include residential chemical dependency treatment with therapeutic childcare, housing support services, and targeted intensive case management (TICM) services. SBSM is the TICM service that includes intensive case management, behavioral health related services, child development screening, assessment and referral, and parenting education. Eligible women/children may receive TICM services until the child's third birthday.

### [Snohomish County](#)

(425) 259-7142

### [Benton-Franklin Counties](#)

(509) 582-0834

### [Whatcom County](#)

(360) 734-4616