

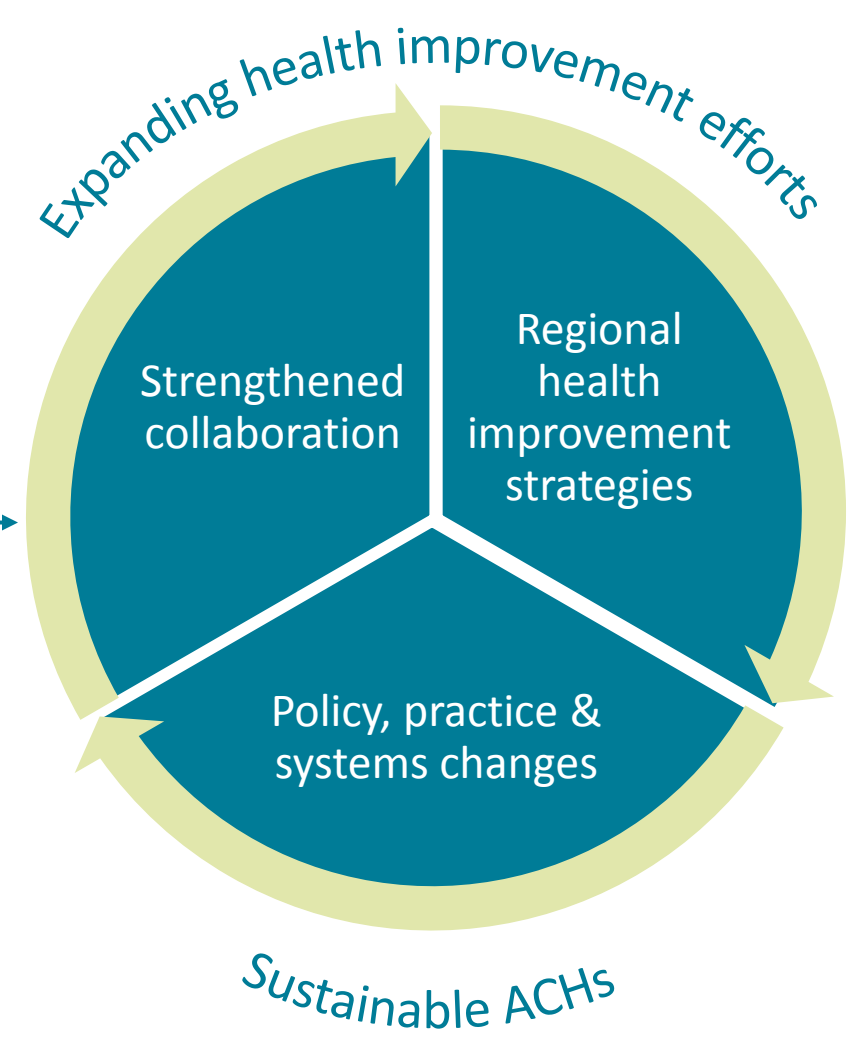
# Accountable Communities of Health | Theory of Change

## Regional multi-sector coalitions

- Build operational capacity
- Foster partnerships & projects
- Community health planning

## State-level partnerships

- Bring regional perspective to state-level policy & practice



ACH-specific outcomes:  
*To be determined*

## Healthier communities

- Improved health & wellbeing
- Improved health equity
- Achievement of Triple Aim

### STRATEGIES

Immediate and ongoing

### OUTCOMES

Short-term, 1-5 years

### IMPACT

Long-term, 5+ years