

Medicaid Transformation Waiver Update

April 26, 2016



Questions and Sound Check

Questions

Please use the online Questions pane to submit questions throughout the webinar. Questions will be addressed at the end of the presentation.

Sound Check:

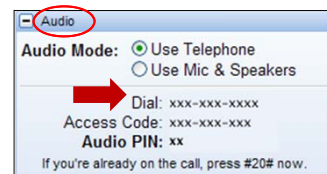
If you cannot hear us now, check to see if:

- Your computer has a sound card.
- Your speakers/headphones are turned off or plugged in.
- Your PC is muted or your sound settings are set incorrectly.
- Your GoToWebinar sound settings are set incorrectly.

Solution

Go to www.GoToWebinar.com for support
OR join us now via telephone.

- To locate the dial-in phone number, click the “+” in “Audio” (turns to “-” when open) then click on “Use Telephone.”
 Number is next to “Dial.”






Today's Presenters

- **Kali Morris (Facilitator)**
Project Manager, Health Care Authority
- **Nathan Johnson**
Chief Policy Officer, Health Care Authority
- **MaryAnne Lindeblad**
Medicaid Director, Health Care Authority
- **Marc Provence**
Medicaid Transformation Manager, Health Care Authority
- **Bea Rector**
*Director, Division of Home and Community Services
Department of Social and Health Services*
- **Jon Brumbach**
Senior Health Policy Analyst, Health Care Authority


3



Topics for Today

- Update on session & CMS conversations
- Value Based Payments
- Initiative 1: Transformation Framework
- Update on waiver Initiatives 2 & 3
- What happens next
- Questions and answers

4






Where to find more information

http://www.hca.wa.gov/hw/Pages/medicaid_transformation.aspx


Available resources

- Project Toolkit Framework
- Updated FAQ and fact sheets
- Waiver application
- Previous webinar presentations (slides & recordings)
- Updates on workgroup activities

Send questions and comments to:
Medicaidtransformation@hca.wa.gov




5



Updates

- Legislative session and budget recap
 - Proviso: Explicit authority for 1115 waiver
- CMS Update
 - Motivated to get to ‘yes’.
 - Remains budget-based.
 - *High level endorsement of programmatic approach.*
 - Identifying sources of non-federal share
 - Designated State Health Programs (DSHP)
 - Intergovernmental Transfers (IGT)




6

Washington’s Medicaid Transformation Goals

Achieving the Triple Aim

- **Reduce avoidable use of intensive services and settings**
—such as acute care hospitals, nursing facilities, psychiatric hospitals, traditional Long-Term Services and Supports, and jails.
- **Improve population health**—focusing on prevention and management of diabetes, cardiovascular disease, pediatric obesity, smoking, mental illness, substance use disorders, and oral health.
- **Accelerate the transition to value-based payment**—using payment methods that take the quality of services and other measures of value into account.
- **Ensure that Medicaid per-capita cost growth is below national trends**—through projects, activities, and services that improve health outcomes and reduce the rate of growth in the overall cost of care for our Medicaid population.



7


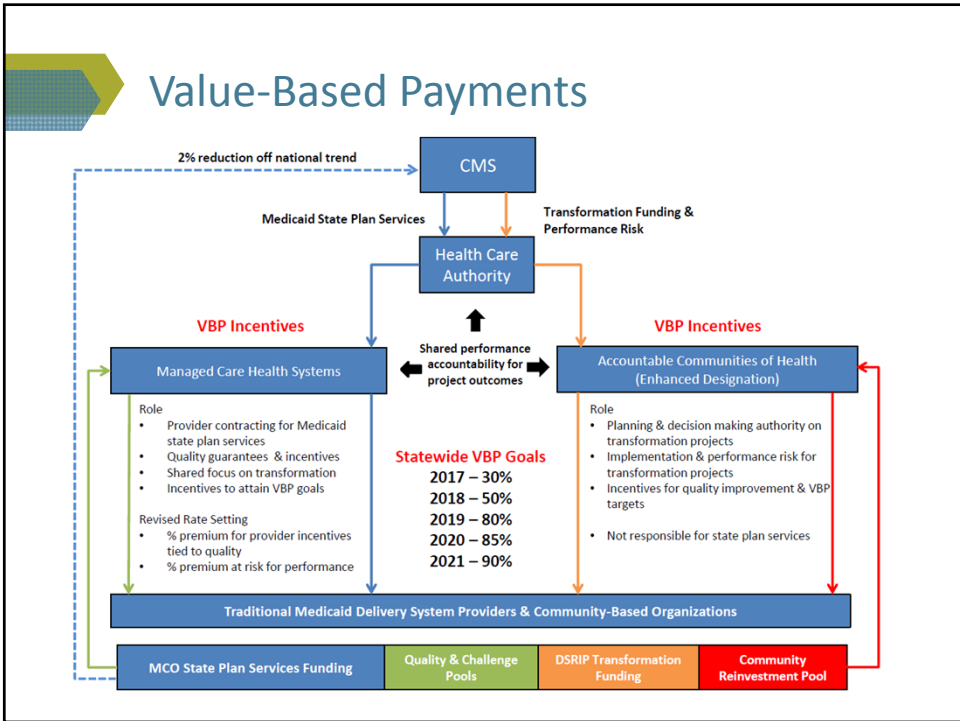
Waiver Initiatives

Initiative 1 Transformation through Accountable Communities of Health	Initiative 2 Enable Older Adults to Stay at Home; Delay or Avoid the Need for More Intensive Care	Initiative 3 Targeted Foundational Community Supports
<div style="border: 1px solid white; border-radius: 10px; padding: 5px; margin-bottom: 10px; background-color: white; color: black; text-align: center;"> Delivery System Reform </div> <ul style="list-style-type: none"> Each region, through its Accountable Community of Health, will be able to pursue projects that will transform the Medicaid delivery system to serve the whole person and use resources more wisely. <div style="text-align: center; background-color: #f0e68c; padding: 5px; margin-top: 10px;"> Transformation Projects </div>	<div style="border: 1px solid white; border-radius: 10px; padding: 5px; margin-bottom: 10px; background-color: white; color: black; text-align: center;"> Benefit: Medicaid Alternative Care (MAC) </div> <ul style="list-style-type: none"> Community based option for Medicaid clients and their families Services to support unpaid family caregivers <div style="border: 1px solid white; border-radius: 10px; padding: 5px; margin-bottom: 10px; background-color: white; color: black; text-align: center;"> Benefit: Tailored Supports for Older Adults (TSOA) </div> <ul style="list-style-type: none"> For individuals “at risk” of future Medicaid LTSS not currently meeting Medicaid financial eligibility criteria Primarily services to support unpaid family caregivers <div style="text-align: center; background-color: #f0e68c; padding: 5px; margin-top: 10px;"> Medicaid Benefits/Services </div>	<div style="border: 1px solid white; border-radius: 10px; padding: 5px; margin-bottom: 10px; background-color: white; color: black; text-align: center;"> Benefit: Supportive Housing </div> <ul style="list-style-type: none"> Individualized, critical services and supports that will assist Medicaid clients to obtain and maintain housing. The housing-related services do <i>not</i> include Medicaid payment for room and board. <div style="border: 1px solid white; border-radius: 10px; padding: 5px; margin-bottom: 10px; background-color: white; color: black; text-align: center;"> Benefit: Supported Employment </div> <ul style="list-style-type: none"> Services such as individualized job coaching and training, employer relations, and assistance with job placement. <div style="text-align: center; background-color: #f0e68c; padding: 5px; margin-top: 10px;"> Medicaid Benefits/Services </div>

Value-Based Payments (VBP)

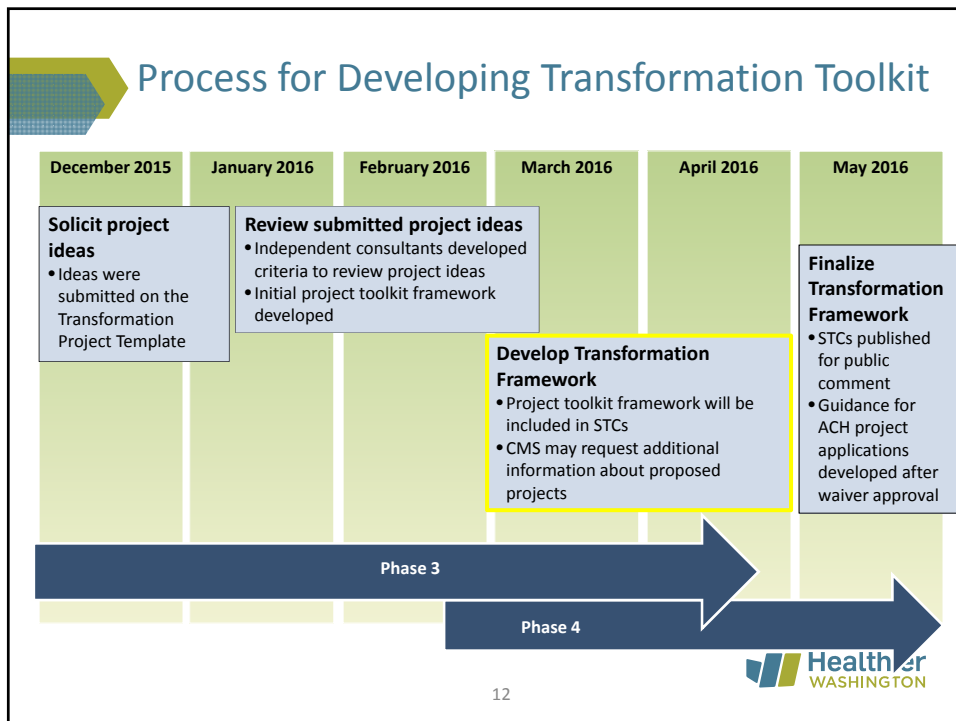
The movement toward value-based payment models is critical to the success and sustainability of Medicaid Transformation

- Healthier Washington goal: 80% VBP by 2020
- Medicaid Transformation waiver will incentivize the move towards VBP goals
- We cannot transform the way we deliver services without changing the way we pay for them

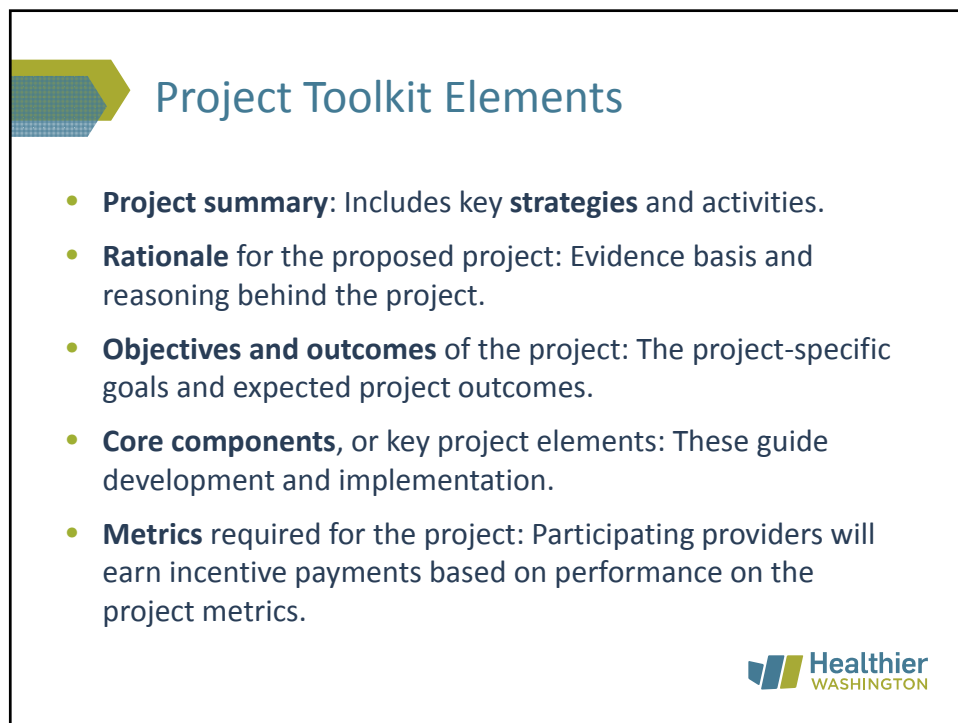
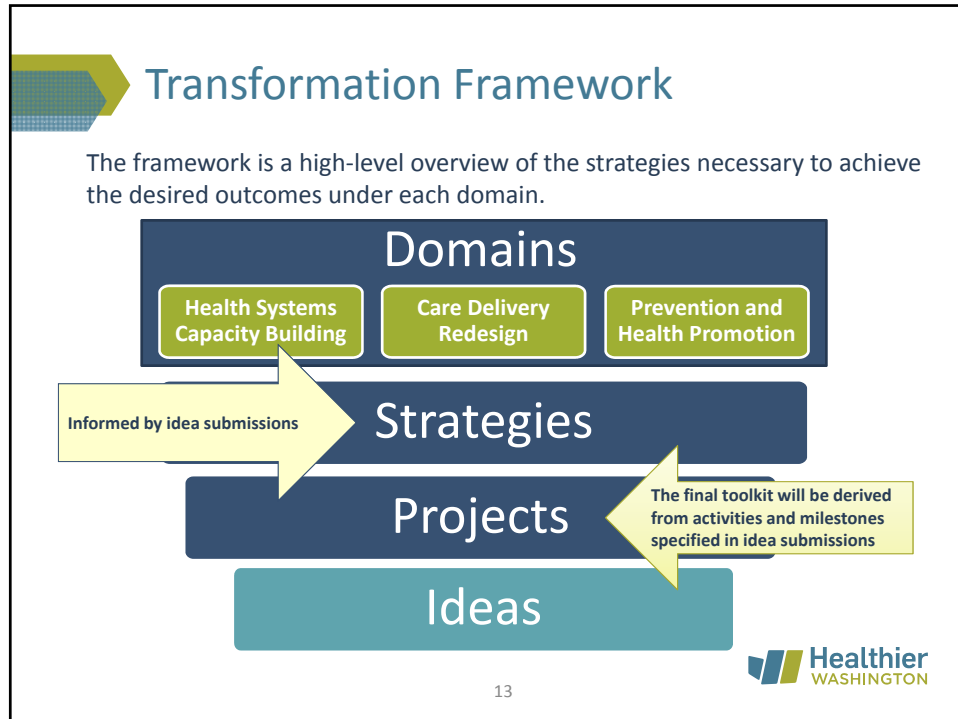



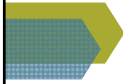
Initiative 1: Transformation through Accountable Communities of Health

11



12





Domain 1: Health Systems Capacity Building

Projects and key strategies

- Primary care models
- Workforce and non-conventional service sites
- Data collection and analytic capacity

15




Domain 2: Care Delivery Redesign

Projects and key strategies

- Bi-directional integration of care
- Care coordination
- Care transitions







Domain 3: Prevention and Health Promotion

Projects and key strategies

- Chronic disease prevention and management
- Maternal and child health



Transformation Toolkit Example

Domain: Care Delivery Redesign

Project title: Bi-Directional Integration of Care

Objectives:

- Address needs of clients not easily engaged in primary care settings
- Improve clients' adherence to treatment regimens
- Reduce avoidable intensive services and settings


Core components:

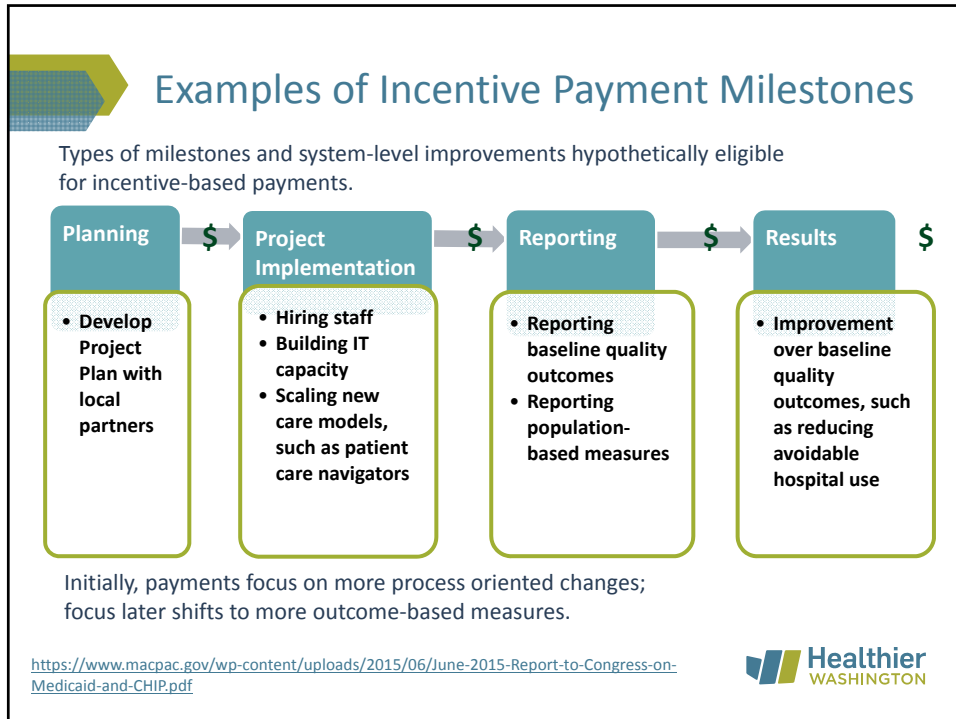
- Establish behavioral health screenings in primary care settings
- Implement patient-centered behavioral health in primary care

Metrics:

- Consistency with statewide common measures

To be specified in final toolkit





Initiative 2: Service Options that Enable Older Adults to Stay at Home and Delay or Avoid the Need for More Intensive Care

21

 **Update on Initiative 2**
Long-Term Services and Supports (LTSS)

CMS update

- Continued communication and engaged discussion with CMS

Currently working on operational details

- Meeting internally to identify systems changes necessary to implement.
- Meeting with stakeholders to develop materials.

Find out more at:

http://www.hca.wa.gov/hw/Pages/mt_initiative2.aspx

22



Estate Recovery

Estate recovery will not apply to the benefits provided under Medicaid Alternative Care (MAC) or Targeted Supports for Older Adults (TSOA).

- Services available to MAC participants are different from state plan or waiver LTSS, therefore Medicaid estate recovery does not apply.
- TSOA participants are individuals who are not currently eligible for Medicaid but are “at risk” of becoming eligible. Therefore, Medicaid estate recovery does not apply.

23




Application for MAC and TSOA

We are doing extensive work to make the application for these benefits simple and accessible.

Ways an individual will be able to apply:

- On-line through WA Connections
 - We are adding new information for these new benefits.
- Filling out a paper applications (TSOA only).
- Contacting a local Area Agency on Aging (AAA).
- Contact DSHS.

24






Eligibility

We are working to simplify our processes and create less burdens for clients and caregivers.

- Participants in TSOA will have continuous 12-month eligibility, regardless of whether a service is received every month.
- Participants in both programs will have their financial and functional eligibility for services reviewed every 12 months.

25




Benefit Specifications

The draft benefit specifications are posted on the Healthier Washington website.

http://www.hca.wa.gov/hw/Pages/mt_initiative2.aspx

- Thank you to everyone who provided feedback during the comment period.
- Additional opportunities to provide feedback will be posted on the website when they are available.

26



Initiative 3: Targeted Foundational Community Supports

27

Update on Initiative 3 *Supportive Housing & Supported Employment*

Key decisions

- Supportive housing phasing
- Medical necessity criteria

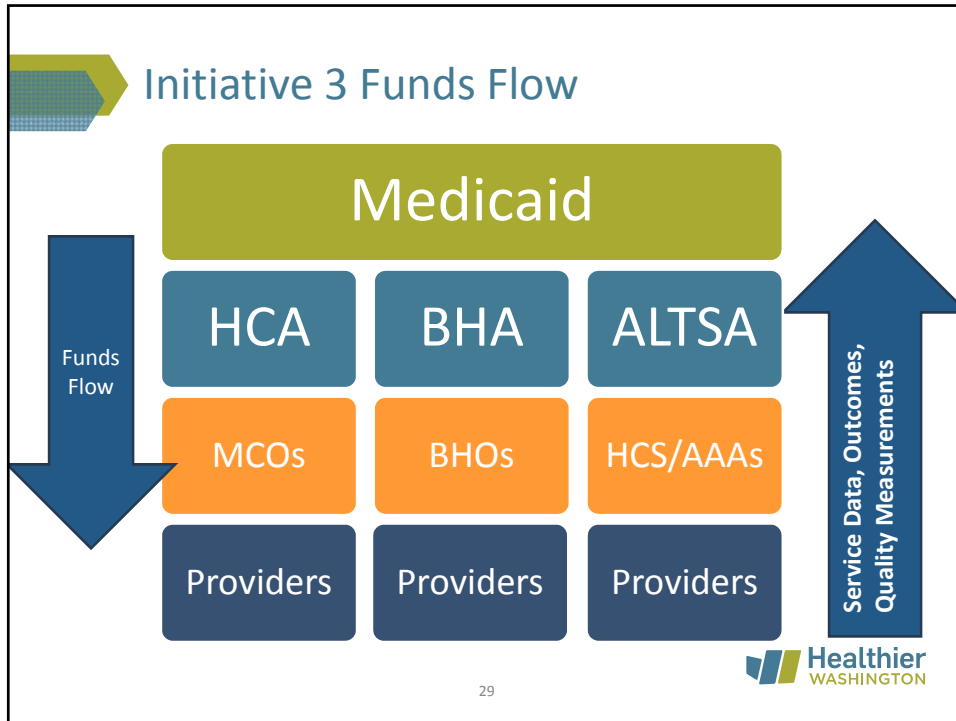
Other activities

- Community engagement and education efforts

Find out more at:

http://www.hca.wa.gov/hw/Pages/mt_initiative3.aspx


28



Where We Are Today – *Refining critical policy design elements*

Outcome Measures/Indicators	SB 5732 / HB 1519 measurements: <ul style="list-style-type: none"> • Stable housing in the community • Employment rate
Quality Plan (CQI)	Evidence-based practice implementation, training, and fidelity review processes
Administration	<ul style="list-style-type: none"> • Service encounter definitions • Licensing/certification WAC • Potential IT modifications
Contracts	Documentation of requirements for eligible populations
Ensuring the most significantly disabled get served	<ul style="list-style-type: none"> • Referral mechanisms between systems • Clarifying differences between other federally funded services

30




Supportive Housing Proposed Phasing


1. Chronically Homeless (HUD Definition)
 - BHO and FIMC
 - Full BHO/MCO benefit
2. Frequent/Lengthy Institutional Contact
3. Frequent/Lengthy Adult Residential Care Stays
4. PRISM Score 1.5+

Why phasing?

- Housing stock
- Delivery system and provider capacity build
- Assessment of demand




31



Supported Employment – Target Populations

- Aged, Blind, Disabled (ABD)/Housing and Essential Needs (HEN)
- Individuals with severe and persistent mental illness, individuals with multiple episodes of inpatient substance use treatment and/or co-occurring
- Working age youth with behavioral health conditions
- Individuals eligible for long-term care services who have a traumatic brain injury





Supportive Housing & Supported Employment Criteria

Medical Necessity Criteria – *for MCO benefit*

- Inability to live in an independent or family setting without support
- At risk of serious harm to self or others
- Dysfunction in role performance
- Risk of deterioration

BHO benefit will still use Access to Care Standards.

AL TSA benefit will use CARE criteria.

33




Current Education and Training Efforts

- Webinars and presentations
 - Monthly Division of Behavioral Health and Recovery (DBHR) Technical Assistance presentations for MCOs and ACHs
- Conference workshops
 - Conference to End Homelessness – May
 - WA Behavioral Healthcare Conference – June
 - Supported Employment Conference – August
 - WA Co-Occurring Disorder Conference – October
- Pilot Projects – Fact sheets available on [DBHR website](#)
 - SH: HARPS, PORCH, BRIDGES
 - SE: BEST, TANF SE, Ticket to Work, BRIDGES



Questions?

35



For more information, contact:

Website:
www.hca.wa.gov/hw

Join the Healthier Washington
Feedback Network:
healthierwa@hca.wa.gov

For questions about Medicaid
Transformation:
medicaidtransformation@hca.wa.gov



36