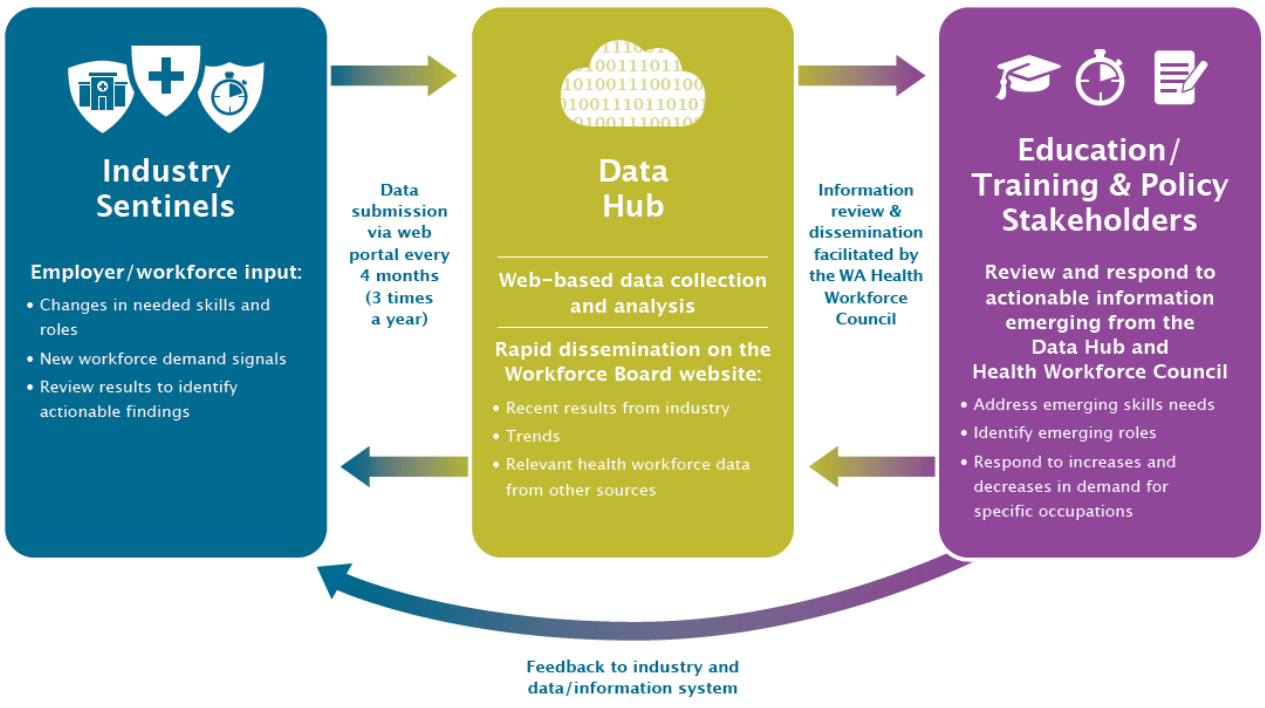


Washington Health Workforce Sentinel Network

To know more quickly—and with more certainty—where shortages are occurring and training is most needed during this time of rapid change in the health care system, Healthier Washington has supported development of the Sentinel Network. This Network links the health care sector with partners in education and training, policymakers, and workforce planners to collectively identify and respond to new and changing demand for health care workers, skills and roles. Health care employers identified as Sentinels regularly track and report about workforce demand at their facilities and contribute to the discovery of emerging trends statewide, regionally, and in different health care settings.



Part of the Healthier Washington initiative, the Sentinel Network is a collaboration of the state’s Workforce Board and the University of Washington Center for Health Workforce Studies, with funding from the Washington State Health Care Authority.

Become a Sentinel

Any health care employer can become a volunteer Sentinel. As a Sentinel, you can:

- Help ensure the state's health workforce is prepared to respond to the transforming health care environment.
- Have access to current and actionable information about emerging workforce needs.
- Compare your organization's experience and emerging workforce demand trends with similar employer groups.

See what skills, roles and occupations are in demand across the state

Visit the Sentinel Network website to view what Sentinels have reported by type of health care facility, region, and occupation.

For more information:

Sentinel Network website: wtb.wa.gov/healthsentinel

Healthier Washington website: hca.wa.gov/hw

Contact: healthworkforce@wasentinelnetwork.org

