

# Introductions:



## **Dody McAlpine**

*North Central Area Representative, OMMEP*

- More than 5 years experience with HCA as a regional representative
- Enjoys solving problems for our clients and community partners
- At DSHS for 15 years before joining HCA

**Dody enjoys fun and fitness.** She excels in a variety of fitness activities—when she’s not in “loafing” mode.

# Introductions:



## Amy Johnson

*Northwest Area Representative, OMMEP*

- State service began at DSHS, 2006. Joined HCA in November.
- Works regularly with OMMEP & EPSD staff on tribal interests within Washington Apple Health
- Serves as “Jill of all Trades” in the implementation of the Affordable Care Act

**Amy has followed in family footsteps.** She is an artist, like most of her family, including both parents, a sister, uncles, aunts, and cousins.

# Introductions:



## Colleen Clifford

*Southwest Regional Representative, OMMEP*

- 24 years of experience in DSHS Community Service Offices
- 7 years with HCA ... in current position since July 2013
- Triage questions, inquiries, and issues throughout southwest WA counties
- Work collaboratively with all organization on policy and medical coverage issues



**Colleen likes to “walk this way.”** She is a walking enthusiast. Her best time is a 12-minute mile. She just finished a 5k and plans on a 10k later this year.

# Introductions:



## Karin Kramer

*South Central Area Representative, OMMEP*

- Worked for State of WA for 13 years.
- Responsible for leading stakeholder training and education for Medicaid eligibility under the ACA.
- Is the HCA Representative for the South Central Area (Benton, Columbia, Franklin, Kittitas, Klickitat, Walla Walla and Yakima counties)

**Karin has two children, Leticia (17) and Diego (12), who keep her very busy with their participation in many sporting activities. If Karin isn't at work, you'll find her in a gym or at the ball fields watching a game. *Go Bears!!***

# Introductions:



## Mark Westenhaver

*Eastern Area Representative, OMMEP*

- Worked for the State of WA for twenty-nine years – 27 with DSHS.
- Responsible for Medicaid and Medicare Policy support in the extreme east counties from Stevens to Whitman. Mark is also responsible for Inmate Medicaid application processing, Medicare savings program eligibility, and is the division lead for Public Disclosure.



**Mark has two children, Collin (18) and Conner (17), who are both preparing for college. When not at work Mark is usually enjoying the outdoors with family and friends. Favs include Westport, WA and the Olympic Peninsula.**

# Introductions:



## Melissa Rivera

*Central West Area Representative, OMMEP*

- 15-years-plus determining eligibility for DSHS programs
- Training completed on eligibility policy and procedures and the new Healthplanfinder
- With her teammates, helps to implement the Affordable Care Act

**Melissa is a sporty kind of gal.** She grew up with six brothers who taught her how to appreciate sports in general.

# Introductions:



## Rebecca Janeczko

*King County Area Representative, OMMEP*

- Began at DSHS in 2003. Joined HCA in 2012.
- Many years of experience in fair hearings.
- Leading teams working on erroneous applications and retroactive medical requests



**Rebecca recently joined one of life's most rewarding "clubs" this year. Parenthood!** She and her spouse became parents to their own little human, Cara, on July 1, 2013.



# Introductions: OMMEP



## Jessie Dean

### *Eligibility Policy Representative*

- Practiced law for 10 years before joining HCA's Office of Medicare, Medicaid Eligibility & Policy in Summer 2013
- Responsible for Washington Administrative Codes and related policy matters on Medicaid eligibility
- Serves as Eligibility Policy Representative for King County, answering policy questions regarding Medicaid eligibility

**Jessie has two adopted nine-year-old boys** with his spouse. When he is not working, parenting or completing his Master's degree in health care policy, he likes to sing karaoke, including *You'll Never Find Another Love Like Mine* by Lou Rawls.



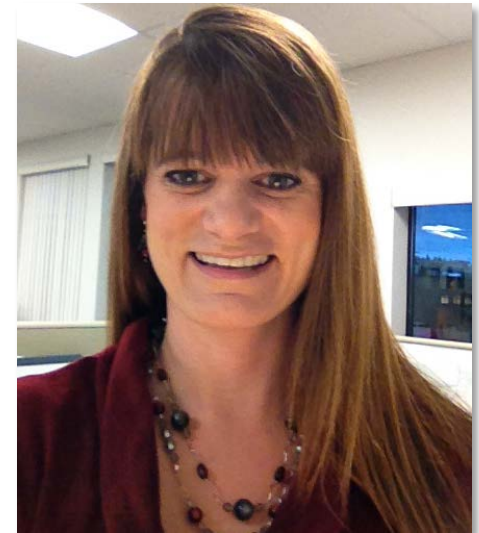
# Introductions:



## Shannon Monroe

*Regional Medical Enrollment Administrator,  
MEDS*

- 18 years at DSHS before starting with HCA.
- Responsible for statewide implementation of the Community-Based Regional Staff



**Shannon's hobbies are as bright as her smile.** She has three adult daughters (Sadie, Erika, and Amanda). She loves the sunshine, travel and experiencing new cultures.

# Introductions:



## Stephen Kozak

*Program Manager, EPSD/OMMEP*

- Helped design and implement WA Apple Health for Workers with Disabilities
- Project Manager for the state's Medicaid Infrastructure Grant under "Ticket to Work" legislation
- Recently worked with CMS to obtain ACA Eligibility SPAs and continues to work with other agencies to support competitive employment of people with disabilities

**It's not Greek to Steve.** It's Russian! He speaks enough of the language studied in high school & college to have simple conversations with Elena in Interpreter Services.

# Introductions:



## Kevin Cornell

*Eligibility Policy Program Manager, OMMEP*

- 25 years working in public assistance program eligibility
- 7 years with OMMEP developing and implementing Medicaid/CHIP eligibility policy
- Current focus on Foster Care, CHIP, Tribal and post-enrollment eligibility policy



**Kevin joined another of life's greatest "clubs" this year. Grandparenthood! Grandson Cyrus is four months old.**