

WISe Administrative Outcome Measures

JUNE 2021

This report presents administrative outcome measures for youth first entering WISe services between SFY 2015 and SFY 2020 who could be linked with administrative outcome data (approximately 99% of all youth who received WISe services over this period). Measures are tabulated for the four quarters (12 months) prior to WISe entry and for up to six quarters (up to 18 months) following WISe entry.

Mental Health Inpatient Services - Any inpatient mental health services in the quarter, including state hospitals, CSTC, CLIP, community hospitals, or evaluation and treatment centers.

Mental Health Crisis Services - Mental health crisis service days per 1,000 member months.

Mental Health Services Received, if Psychotropic Medications Filled - Of clients who received psychotropic medications in five key classes (antianxiety, antidepressant, antimania, antipsychotic, ADHD) in the period, those who received at least one mental health service in the same period.

Substance Use Disorder (SUD) Services Received, if Treatment Need Indicated - Of clients with substance use disorder treatment need indicated in the 12 months prior to WISe entry, those receiving any substance use disorder services (inpatient, outpatient, opiate substitution/buprenorphine or case management) in the period.

Emergency Department Visits - Emergency department visits, unduplicated by service date, per 1,000 member months.

Emergency Department Visits with Mental Health Diagnosis - Emergency Department visits with a mental health diagnosis in seven key categories (psychosis, mania/bipolar, depression, anxiety, ADHD, disruptive/impulse/conduct disorder, adjustment disorder), unduplicated by service date, per 1,000 member months.

Emergency Department Visits with Substance Use Disorder Diagnosis - Emergency department visits with an alcohol- or drug-related diagnosis, unduplicated by service date, per 1,000 member months.

Suicide/Self-Injury Diagnoses - Number of days with at least one medical claim/encounter with a diagnosis indicating attempted suicide or self-injury, per 1,000 member months. Months prior to October 2015 were multiplied by an adjustment factor to enhance comparability of pre- and post-ICD-10 suicide/self-injury diagnosing.

Juvenile Justice Convictions - Any convictions in the period.

Foster Care Placement Changes - Of clients in foster care in month of WISe entry, any placement changes in the period.

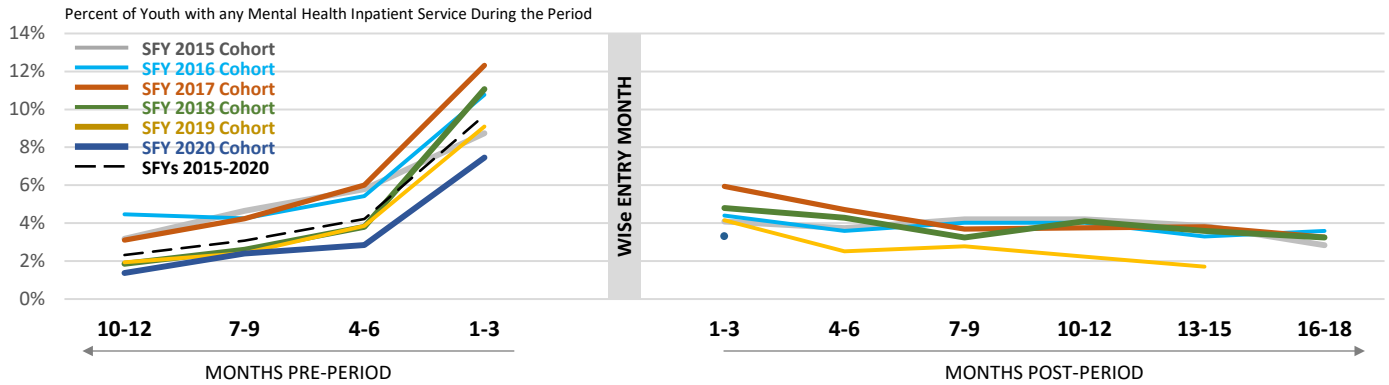
Homelessness/Housing Instability - Ever homeless without housing (e.g. in a shelter or on the street) or homeless with housing (e.g. couch surfing) in period, based on data from the Department of Social and Health Services' Automated Client Eligibility System (ACES).

Any Out-of-Home Placement - Youth with any type of out-of-home placement in the period, including foster care, mental health inpatient, Juvenile Rehabilitation institution, or Developmental Disabilities residential habilitation center.

WISe Outcomes

JUNE 2021

Mental Health Inpatient Services



Cohort	Entered WISe	N	MONTHS PRE-PERIOD				MONTHS POST PERIOD					
			10-12	7-9	4-6	1-3	1-3	4-6	7-9	10-12	13-15	16-18
WASHINGTON												
Percent of Youth with any Mental Health Inpatient Services During the Period												
SFY 2015	7/14 - 6/15	881	3.2%	4.7%	5.8%	8.7%	4.1%	3.7%	4.2%	4.2%	3.9%	2.8%
SFY 2016	7/15 - 6/16	1,365	4.5%	4.2%	5.4%	10.8%	4.4%	3.6%	4.0%	4.0%	3.3%	3.6%
SFY 2017	7/16 - 6/17	1,867	3.1%	4.2%	6.0%	12.3%	5.9%	4.7%	3.7%	3.7%	3.8%	3.3%
SFY 2018	7/17 - 6/18	2,313	1.9%	2.6%	3.8%	11.1%	4.8%	4.3%	3.2%	4.1%	3.6%	3.2%
SFY 2019	7/18 - 6/19	2,694	1.9%	2.4%	3.9%	9.1%	4.2%	2.5%	2.8%	2.2%	1.7%	
SFY 2020	7/19 - 6/20	3,204	1.4%	2.4%	2.8%	7.5%	3.3%					
SFYs 2015-2020	7/14 - 6/20	12,324	2.3%	3.1%	4.2%	9.7%	4.3%					Data not available

REGIONS		Entered WISe										
GREAT RIVERS												
SFY 2015	7/14 - 6/15	---	0.0%	0.0%	0.0%	0.0%	8.7%	0.0%	0.0%	0.0%	8.7%	8.7%
SFY 2016	7/15 - 6/16	---	4.9%	1.2%	3.7%	7.4%	1.2%	0.0%	1.2%	1.2%	2.5%	0.0%
SFY 2017	7/16 - 6/17	---	2.3%	3.1%	6.1%	9.9%	6.9%	4.6%	3.1%	3.1%	3.1%	3.8%
SFY 2018	7/17 - 6/18	---	0.0%	0.0%	0.5%	5.5%	1.5%	3.0%	0.5%	1.5%	1.0%	2.0%
SFY 2019	7/18 - 6/19	---	1.3%	0.9%	0.9%	5.1%	3.0%	1.3%	1.3%	1.3%	3.0%	
SFY 2020	7/19 - 6/20	---	0.4%	4.0%	4.0%	5.8%	1.8%					
SFYs 2015-2020	7/14 - 6/20	944	1.2%	1.9%	2.6%	6.1%	2.9%					Data not available

GREATER COLUMBIA		Entered WISe										
SFY 2015	7/14 - 6/15	---	2.1%	5.3%	8.4%	15.3%	4.2%	5.8%	6.3%	7.4%	5.3%	3.7%
SFY 2016	7/15 - 6/16	---	1.4%	1.4%	3.1%	11.6%	6.2%	3.4%	2.7%	4.5%	2.7%	3.4%
SFY 2017	7/16 - 6/17	---	1.8%	1.5%	2.1%	6.1%	4.3%	2.4%	2.1%	1.5%	0.6%	0.6%
SFY 2018	7/17 - 6/18	---	0.0%	0.8%	1.1%	5.3%	3.1%	2.5%	2.0%	2.2%	1.4%	0.8%
SFY 2019	7/18 - 6/19	---	1.0%	1.2%	1.7%	5.4%	1.7%	1.5%	1.5%	1.5%	0.5%	
SFY 2020	7/19 - 6/20	---	1.2%	2.1%	1.9%	3.8%	1.7%					
SFYs 2015-2020	7/14 - 6/20	1,996	1.2%	1.8%	2.6%	7.0%	3.3%					Data not available

KING COUNTY		Entered WISe										
SFY 2015	7/14 - 6/15	0										
SFY 2016	7/15 - 6/16	---	9.8%	8.8%	9.8%	7.9%	6.5%	8.4%	8.4%	7.0%	6.5%	6.0%
SFY 2017	7/16 - 6/17	---	6.3%	7.8%	7.8%	17.6%	5.9%	4.4%	6.8%	6.3%	7.3%	5.4%
SFY 2018	7/17 - 6/18	---	3.6%	4.6%	10.8%	13.8%	10.3%	9.7%	6.2%	7.7%	10.8%	5.6%
SFY 2019	7/18 - 6/19	---	4.2%	3.3%	8.9%	13.6%	6.4%	5.8%	4.2%	5.0%	3.1%	
SFY 2020	7/19 - 6/20	---	1.9%	2.9%	3.6%	6.1%	2.7%					
SFYs 2015-2020	7/14 - 6/20	1,496	4.4%	4.7%	7.3%	10.8%	5.5%					Data not available

WISe Outcomes

JUNE 2021

Mental Health Inpatient Services

NORTH CENTRAL																
SFY 2015	7/14 - 6/15	0														
SFY 2016	7/15 - 6/16	--- ²	0.0%	0.0%	5.0%	0.0%	0.0%	0.0%	0.0%	5.0%	5.0%	5.0%	5.0%	5.0%	5.0%	
SFY 2017	7/16 - 6/17	--- ²	6.3%	8.3%	6.3%	12.5%	4.2%	8.3%	4.2%	6.3%	6.3%	4.2%	4.2%	6.3%	4.2%	
SFY 2018	7/17 - 6/18	--- ²	3.0%	2.2%	1.5%	5.2%	2.2%	1.5%	3.7%	4.4%	3.7%	3.7%	2.2%	1.5%	3.7%	
SFY 2019	7/18 - 6/19	--- ²	0.7%	0.7%	0.7%	5.5%	1.4%	2.1%	1.4%	1.4%	0.0%		1.4%	2.1%	1.4%	
SFY 2020	7/19 - 6/20	--- ²	0.9%	0.9%	0.9%	4.4%	3.5%						3.5%			
SFYs 2015-2020	7/14 - 6/20	--- ²	1.9%	1.9%	1.7%	5.6%	2.4%						2.4%		<i>Data not available</i>	
NORTH SOUND																
SFY 2015	7/14 - 6/15	--- ²	7.2%	9.0%	9.0%	12.7%	6.6%	4.2%	5.4%	3.6%	4.2%	3.6%	6.6%	4.2%	5.4%	
SFY 2016	7/15 - 6/16	--- ²	5.0%	5.0%	7.0%	15.0%	5.5%	5.0%	6.5%	4.5%	4.0%	4.5%	5.5%	5.0%	6.5%	
SFY 2017	7/16 - 6/17	--- ²	3.8%	6.4%	8.9%	14.0%	8.5%	5.1%	4.3%	3.4%	3.4%	4.3%	8.5%	5.1%	4.3%	
SFY 2018	7/17 - 6/18	--- ²	4.2%	7.6%	8.1%	16.1%	3.4%	3.4%	3.4%	4.7%	3.0%	4.7%	3.4%	3.4%	3.4%	
SFY 2019	7/18 - 6/19	--- ²	2.3%	4.1%	6.9%	11.6%	4.9%	3.6%	3.9%	1.3%	1.0%	4.9%	3.6%	3.9%	1.3%	
SFY 2020	7/19 - 6/20	--- ²	1.6%	5.0%	5.4%	9.7%	3.8%					3.8%				
SFYs 2015-2020	7/14 - 6/20	1,669	3.4%	5.8%	7.2%	12.6%	5.2%					5.2%			<i>Data not available</i>	
PIERCE																
SFY 2015	7/14 - 6/15	--- ²	0.7%	1.4%	3.5%	5.6%	0.0%	2.8%	2.1%	2.8%	1.4%	1.4%	0.0%	2.8%	2.1%	
SFY 2016	7/15 - 6/16	--- ²	1.6%	1.6%	1.6%	10.8%	2.7%	2.7%	2.7%	2.7%	2.2%	1.1%	2.7%	2.7%	2.7%	
SFY 2017	7/16 - 6/17	--- ²	1.5%	1.9%	4.5%	8.6%	1.1%	2.6%	0.7%	2.6%	2.2%	1.1%	1.1%	2.6%	0.7%	
SFY 2018	7/17 - 6/18	--- ²	0.9%	1.6%	2.8%	10.1%	2.8%	1.6%	1.9%	5.0%	3.5%	1.6%	2.8%	1.6%	1.9%	
SFY 2019	7/18 - 6/19	--- ²	0.7%	0.4%	0.7%	6.3%	2.1%	0.7%	2.8%	1.8%	2.5%	2.1%	0.7%	0.7%	0.7%	
SFY 2020	7/19 - 6/20	--- ²	0.5%	0.5%	0.3%	5.7%	3.0%					3.0%				
SFYs 2015-2020	7/14 - 6/20	1,565	1.0%	1.2%	2.0%	7.8%	2.2%					2.2%			<i>Data not available</i>	
SALISH																
SFY 2015	7/14 - 6/15	0														
SFY 2016	7/15 - 6/16	--- ²	0.0%	22.2%	5.6%	22.2%	0.0%	0.0%	5.6%	0.0%	0.0%	5.6%	0.0%	0.0%	5.6%	
SFY 2017	7/16 - 6/17	--- ²	6.5%	10.9%	15.2%	28.3%	15.2%	13.0%	10.9%	4.3%	6.5%	8.7%	15.2%	13.0%	10.9%	
SFY 2018	7/17 - 6/18	--- ²	2.1%	0.0%	2.9%	13.6%	6.4%	3.6%	2.1%	4.3%	4.3%	3.6%	6.4%	3.6%	2.1%	
SFY 2019	7/18 - 6/19	--- ²	0.0%	0.5%	2.1%	7.4%	7.9%	3.2%	3.2%	1.6%	1.1%	7.9%	3.2%	3.2%	1.6%	
SFY 2020	7/19 - 6/20	--- ²	1.4%	0.9%	1.4%	6.6%	3.8%					3.8%				
SFYs 2015-2020	7/14 - 6/20	--- ²	1.5%	2.0%	3.1%	10.5%	6.4%					6.4%			<i>Data not available</i>	
SOUTHWEST																
SFY 2015	7/14 - 6/15	--- ²	2.3%	3.9%	3.1%	5.4%	3.9%	3.1%	4.7%	4.7%	7.8%	3.1%	3.9%	3.1%	4.7%	
SFY 2016	7/15 - 6/16	--- ²	1.5%	1.5%	0.7%	7.3%	1.5%	0.7%	0.7%	2.2%	1.5%	2.9%	1.5%	0.7%	0.7%	
SFY 2017	7/16 - 6/17	--- ²	0.0%	1.4%	0.7%	3.5%	4.9%	2.8%	2.8%	1.4%	4.2%	2.8%	4.9%	2.8%	2.8%	
SFY 2018	7/17 - 6/18	--- ²	0.0%	1.4%	0.7%	10.2%	4.8%	4.1%	2.7%	3.4%	0.7%	2.0%	4.8%	4.1%	2.7%	
SFY 2019	7/18 - 6/19	--- ²	0.0%	0.0%	2.2%	6.1%	3.3%	1.1%	1.7%	1.1%	2.2%	3.3%	1.1%	1.7%	1.1%	
SFY 2020	7/19 - 6/20	--- ²	1.0%	0.5%	1.6%	7.8%	4.7%					4.7%				
SFYs 2015-2020	7/14 - 6/20	--- ²	0.8%	1.3%	1.5%	6.8%	3.9%					3.9%			<i>Data not available</i>	

WISe Outcomes

JUNE 2021

Mental Health Inpatient Services

SPOKANE												
SFY 2015	7/14 - 6/15	--- ¹	20.0%	40.0%	60.0%	40.0%	20.0%	20.0%	20.0%	20.0%	20.0%	0.0%
SFY 2016	7/15 - 6/16	--- ²	34.2%	28.9%	42.1%	50.0%	15.8%	5.3%	13.2%	7.9%	10.5%	10.5%
SFY 2017	7/16 - 6/17	--- ²	5.0%	7.7%	12.6%	27.2%	13.0%	11.1%	7.7%	9.2%	7.3%	6.9%
SFY 2018	7/17 - 6/18	--- ²	2.6%	3.1%	5.6%	19.1%	9.7%	9.2%	5.9%	6.1%	5.4%	6.6%
SFY 2019	7/18 - 6/19	--- ²	3.2%	5.3%	5.3%	14.7%	5.9%	2.4%	3.7%	4.0%	1.9%	
SFY 2020	7/19 - 6/20	--- ²	2.6%	2.6%	4.1%	15.9%	6.4%	Data not available				
SFYs 2015-2020	7/14 - 6/20	1,415	4.1%	5.2%	7.6%	19.6%	8.7%	Data not available				

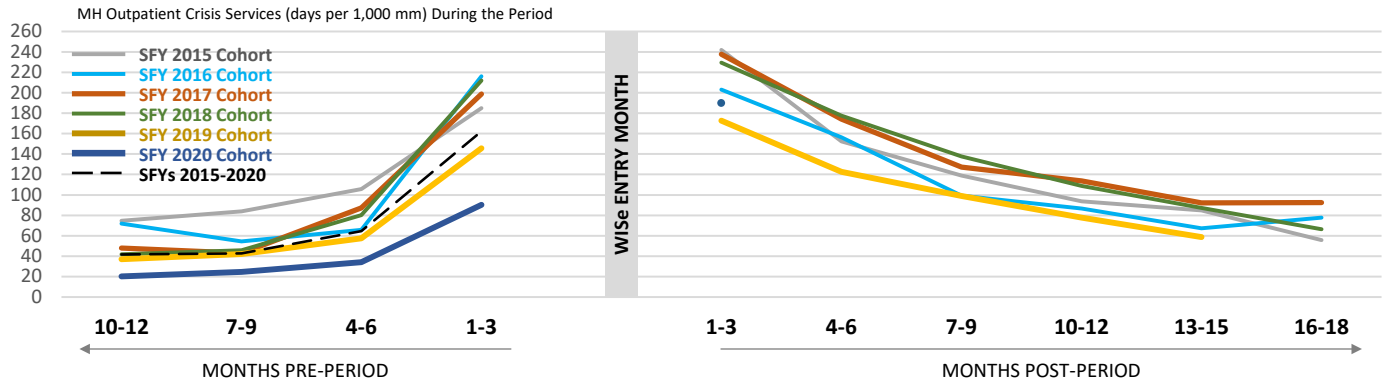
THURSTON-MASON												
SFY 2015	7/14 - 6/15	--- ²	3.1%	3.1%	3.5%	4.4%	4.0%	2.7%	2.7%	2.7%	0.9%	1.8%
SFY 2016	7/15 - 6/16	--- ²	2.2%	2.2%	2.8%	3.9%	1.7%	1.7%	1.7%	2.8%	1.1%	2.8%
SFY 2017	7/16 - 6/17	--- ²	2.0%	1.5%	2.0%	4.9%	1.5%	1.5%	0.5%	1.0%	2.5%	1.0%
SFY 2018	7/17 - 6/18	--- ²	3.1%	4.2%	2.6%	6.8%	1.6%	1.6%	3.1%	0.5%	2.1%	1.0%
SFY 2019	7/18 - 6/19	--- ²	4.6%	5.4%	3.8%	8.5%	3.8%	1.5%	2.3%	0.8%	1.5%	
SFY 2020	7/19 - 6/20	--- ²	1.3%	1.6%	2.3%	7.1%	2.9%	Data not available				
SFYs 2015-2020	7/14 - 6/20	1,240	2.5%	2.7%	2.7%	5.9%	2.6%	Data not available				

Notes. ¹Primary suppression: To protect the privacy of individuals, cells in this data product that represent 10 or fewer persons are not displayed. ²Secondary suppression: Region-level numbers of youth in individual years are also suppressed because most could be used to recalculate suppressed values. Aggregate years are shown where possible at the region level.

WISe Outcomes

JUNE 2021

Mental Health Crisis Services



Cohort	Entered WISe	N	MONTHS PRE-PERIOD				MONTHS POST PERIOD					
			10-12	7-9	4-6	1-3	1-3	4-6	7-9	10-12	13-15	16-18
WASHINGTON			MH Outpatient Crisis Services (days per 1,000 mm) During the Period									
SFY 2015	7/14 - 6/15	881	74.6	84.0	105.6	185.0	241.9	152.3	119.0	93.8	84.8	55.8
SFY 2016	7/15 - 6/16	1,365	71.8	54.5	65.9	216.1	203.2	156.3	99.4	86.8	67.4	77.6
SFY 2017	7/16 - 6/17	1,867	48.1	43.0	87.3	198.6	237.7	174.1	127.3	113.6	92.2	92.6
SFY 2018	7/17 - 6/18	2,313	41.9	45.9	80.1	212.0	229.5	177.7	137.6	108.7	87.2	66.3
SFY 2019	7/18 - 6/19	2,694	37.0	42.2	57.4	145.5	172.7	122.6	99.0	77.8	58.9	
SFY 2020	7/19 - 6/20	3,204	20.2	24.5	34.3	90.3	189.8					
SFYs 2015-2020	7/14 - 6/20	12,324	41.7	42.7	64.5	162.3	206.0					Data not available

REGIONS	Entered WISe	N	MONTHS PRE-PERIOD				MONTHS POST PERIOD					
GREAT RIVERS			10-12	7-9	4-6	1-3	1-3	4-6	7-9	10-12	13-15	16-18
SFY 2015	7/14 - 6/15	---2	174.6	75.8	242.4	753.6	326.1	242.4	60.6	45.5	75.8	106.1
SFY 2016	7/15 - 6/16	---2	39.5	39.0	63.3	139.9	203.7	80.2	42.2	82.3	48.9	175.4
SFY 2017	7/16 - 6/17	---2	69.6	42.7	135.5	185.0	392.3	220.5	216.1	216.9	165.4	177.2
SFY 2018	7/17 - 6/18	---2	51.6	18.4	96.7	241.3	319.2	192.0	161.5	162.2	225.8	158.3
SFY 2019	7/18 - 6/19	---2	75.8	58.0	91.4	248.2	270.4	225.6	173.2	134.5	90.5	
SFY 2020	7/19 - 6/20	---2	51.2	90.1	102.7	123.9	360.8					
SFYs 2015-2020	7/14 - 6/20	944	61.9	55.7	103.0	205.0	319.5					Data not available

GREATER COLUMBIA	Entered WISe	N	MONTHS PRE-PERIOD				MONTHS POST PERIOD					
			10-12	7-9	4-6	1-3	1-3	4-6	7-9	10-12	13-15	16-18
SFY 2015	7/14 - 6/15	---2	55.2	109.3	121.2	252.6	296.5	136.5	173.0	137.4	91.2	88.9
SFY 2016	7/15 - 6/16	---2	111.1	54.1	114.7	321.7	245.1	160.3	94.2	119.1	68.0	111.5
SFY 2017	7/16 - 6/17	---2	54.4	42.5	42.5	120.3	142.7	107.5	68.3	53.1	48.1	66.3
SFY 2018	7/17 - 6/18	---2	25.8	50.9	64.1	190.1	185.8	128.1	114.1	100.1	77.5	26.7
SFY 2019	7/18 - 6/19	---2	42.4	44.7	46.1	123.8	110.6	92.8	56.1	58.4	33.5	
SFY 2020	7/19 - 6/20	---2	12.8	44.6	27.0	100.0	125.4					
SFYs 2015-2020	7/14 - 6/20	1,996	46.1	52.9	61.9	170.9	169.8					Data not available

KING COUNTY	Entered WISe	N	MONTHS PRE-PERIOD				MONTHS POST PERIOD					
			10-12	7-9	4-6	1-3	1-3	4-6	7-9	10-12	13-15	16-18
SFY 2015	7/14 - 6/15	0										
SFY 2016	7/15 - 6/16	---2	100.3	72.1	21.8	43.6	97.5	99.5	60.3	67.6	49.8	73.2
SFY 2017	7/16 - 6/17	---2	42.3	41.5	94.8	252.5	125.8	88.2	99.0	61.1	56.1	33.3
SFY 2018	7/17 - 6/18	---2	27.5	91.7	145.6	197.6	110.0	89.8	24.8	19.9	29.0	27.8
SFY 2019	7/18 - 6/19	---2	36.4	33.8	62.9	121.0	73.8	40.3	46.9	46.9	13.4	
SFY 2020	7/19 - 6/20	---2	14.9	22.1	27.6	53.4	30.2					
SFYs 2015-2020	7/14 - 6/20	1,496	37.9	44.0	59.7	114.4	73.8					Data not available

WISe Outcomes

JUNE 2021

Mental Health Crisis Services

NORTH CENTRAL															
SFY 2015	7/14 - 6/15	0													
SFY 2016	7/15 - 6/16	--- ²	50.0	150.0	433.3	133.3	0.0	100.0	133.3	100.0	193.0	91.7			
SFY 2017	7/16 - 6/17	--- ²	48.6	83.3	34.7	187.5	187.5	97.2	7.1	28.4	7.2	29.6			
SFY 2018	7/17 - 6/18	--- ²	80.1	31.3	53.8	155.6	47.3	75.2	125.3	76.9	96.4	41.7			
SFY 2019	7/18- 6/19	--- ²	24.7	28.8	16.2	134.3	78.2	88.0	42.3	18.9	19.3				
SFY 2020	7/19- 6/20	--- ²	24.9	27.8	69.1	104.2	67.3								
SFYs 2015-2020	7/14 - 6/20	--- ²	44.8	40.6	60.3	138.7	74.5								
							<i>Data not available</i>								
NORTH SOUND															
SFY 2015	7/14 - 6/15	--- ²	6.6	29.7	18.4	48.2	299.8	137.0	118.8	53.4	94.6	50.1			
SFY 2016	7/15 - 6/16	--- ²	8.9	19.3	30.5	61.7	351.7	328.3	140.8	101.9	79.4	82.4			
SFY 2017	7/16 - 6/17	--- ²	18.3	25.4	50.2	141.6	272.8	188.8	108.7	100.9	78.8	48.9			
SFY 2018	7/17 - 6/18	--- ²	33.3	78.2	74.0	133.3	263.4	248.2	164.5	147.2	61.9	50.6			
SFY 2019	7/18- 6/19	--- ²	39.1	57.8	64.9	99.5	186.0	133.9	128.6	85.3	48.9				
SFY 2020	7/19- 6/20	--- ²	29.5	11.4	15.0	43.7	185.5								
SFYs 2015-2020	7/14 - 6/20	1,669	26.0	36.7	42.2	85.7	240.2								
							<i>Data not available</i>								
PIERCE															
SFY 2015	7/14 - 6/15	--- ²	51.7	85.9	165.4	293.1	206.6	196.2	127.7	169.1	63.3	49.8			
SFY 2016	7/15 - 6/16	--- ²	24.0	58.7	54.0	389.2	169.4	112.3	88.9	79.5	103.4	58.1			
SFY 2017	7/16 - 6/17	--- ²	46.5	23.7	87.6	333.3	176.7	173.7	135.0	112.4	110.7	70.5			
SFY 2018	7/17 - 6/18	--- ²	36.5	52.8	76.1	389.8	208.9	153.9	98.0	74.3	53.7	30.9			
SFY 2019	7/18- 6/19	--- ²	30.7	38.7	29.1	204.2	146.1	88.2	87.9	57.4	85.2				
SFY 2020	7/19- 6/20	--- ²	11.8	1.0	5.8	89.0	236.7								
SFYs 2015-2020	7/14 - 6/20	1,565	31.3	36.8	58.4	266.8	193.7								
							<i>Data not available</i>								
SALISH															
SFY 2015	7/14 - 6/15	0													
SFY 2016	7/15 - 6/16	--- ²	92.6	148.1	78.4	92.6	129.6	92.6	74.1	37.0	18.5	55.6			
SFY 2017	7/16 - 6/17	--- ²	37.0	51.9	59.3	217.4	144.9	148.1	59.3	65.0	42.7	63.1			
SFY 2018	7/17 - 6/18	--- ²	56.8	36.2	69.5	110.3	113.9	123.2	156.9	134.3	106.5	116.2			
SFY 2019	7/18- 6/19	--- ²	22.9	19.7	43.7	75.3	149.9	70.0	64.5	38.9	26.4				
SFY 2020	7/19- 6/20	--- ²	15.4	17.1	18.2	101.9	103.3								
SFYs 2015-2020	7/14 - 6/20	--- ²	31.7	29.3	43.2	104.2	124.2								
							<i>Data not available</i>								
SOUTHWEST															
SFY 2015	7/14 - 6/15	--- ²	169.5	98.0	124.7	242.2	385.0	263.6	151.0	82.7	165.3	79.9			
SFY 2016	7/15 - 6/16	--- ²	90.6	27.5	0.0	386.9	295.6	158.2	96.7	51.3	12.9	28.6			
SFY 2017	7/16 - 6/17	--- ²	13.2	12.5	38.1	130.5	328.7	171.3	198.6	103.9	101.2	151.5			
SFY 2018	7/17 - 6/18	--- ²	2.6	7.6	29.4	141.6	371.9	172.3	139.9	160.7	108.7	132.4			
SFY 2019	7/18- 6/19	--- ²	0.0	0.0	23.0	138.9	374.1	284.3	291.9	215.2	189.5				
SFY 2020	7/19- 6/20	--- ²	9.5	12.8	55.0	188.3	699.5								
SFYs 2015-2020	7/14 - 6/20	--- ²	41.1	23.4	44.1	199.2	424.2								
							<i>Data not available</i>								

WISe Outcomes

JUNE 2021

Mental Health Crisis Services

SPOKANE												
SFY 2015	7/14 - 6/15	--- ¹	0.0	0.0	600.0	0.0	400.0	133.3	933.3	400.0	300.0	0.0
SFY 2016	7/15 - 6/16	--- ²	368.4	289.5	189.2	333.3	438.6	482.5	509.3	363.6	266.7	100.0
SFY 2017	7/16 - 6/17	--- ²	103.1	101.2	217.1	244.9	479.5	334.6	217.9	234.3	150.7	162.7
SFY 2018	7/17 - 6/18	--- ²	66.8	39.3	109.1	228.3	348.7	319.2	217.3	136.7	88.6	85.0
SFY 2019	7/18- 6/19	--- ²	35.8	61.1	83.1	180.1	256.5	160.4	93.0	94.8	80.8	
SFY 2020	7/19- 6/20	--- ²	22.9	9.0	28.1	102.4	136.7					
SFYs 2015-2020	7/14 - 6/20	1,415	62.9	55.9	106.5	190.1	299.2	<i>Data not available</i>				

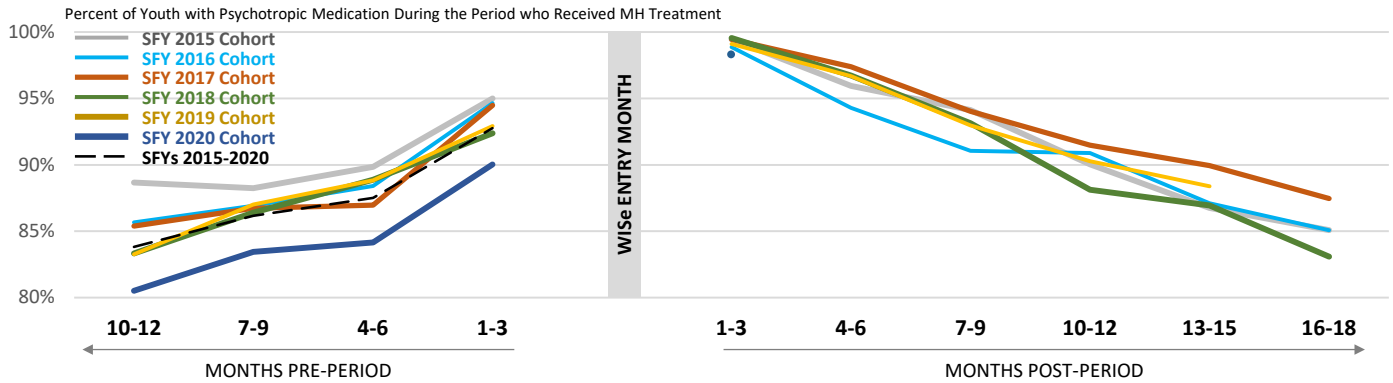
THURSTON-MASON												
SFY 2015	7/14 - 6/15	--- ²	92.5	96.8	85.3	72.5	82.6	75.8	36.5	42.8	35.5	17.3
SFY 2016	7/15 - 6/16	--- ²	26.7	20.1	73.4	145.6	37.5	42.1	59.7	27.3	41.9	31.9
SFY 2017	7/16 - 6/17	--- ²	20.6	23.2	46.9	156.7	101.2	141.7	82.5	95.2	91.5	104.6
SFY 2018	7/17 - 6/18	--- ²	34.7	24.3	42.6	172.9	189.2	122.2	129.9	75.1	68.2	57.8
SFY 2019	7/18- 6/19	--- ²	46.8	41.3	95.2	130.2	100.8	78.1	43.3	24.2	30.6	
SFY 2020	7/19- 6/20	--- ²	13.9	17.0	47.1	89.5	190.3					
SFYs 2015-2020	7/14 - 6/20	1,240	38.1	36.6	62.2	122.5	124.6	<i>Data not available</i>				

Notes. ¹Primary suppression: To protect the privacy of individuals, cells in this data product that represent 10 or fewer persons are not displayed. ²Secondary suppression: Region-level numbers of youth in individual years are also suppressed because most could be used to recalculate suppressed values. Aggregate years are shown where possible at the region level.

WISe Outcomes

JUNE 2021

Mental Health Services Received, if Psychotropic Medications Filled



Cohort	Entered WISe	N	MONTHS PRE-PERIOD				MONTHS POST PERIOD					
			10-12	7-9	4-6	1-3	1-3	4-6	7-9	10-12	13-15	16-18
Percent of Youth with Psychotropic Medication During the Period who Received MH Treatment												
WASHINGTON												
SFY 2015	7/14 - 6/15	881	88.7%	88.2%	89.9%	95.0%	99.5%	95.9%	94.1%	90.0%	86.8%	85.1%
SFY 2016	7/15 - 6/16	1,365	85.7%	86.9%	88.4%	94.6%	98.9%	94.3%	91.0%	90.9%	87.1%	85.1%
SFY 2017	7/16 - 6/17	1,867	85.4%	86.7%	87.0%	94.5%	99.4%	97.4%	94.0%	91.5%	89.9%	87.5%
SFY 2018	7/17 - 6/18	2,313	83.3%	86.4%	88.9%	92.4%	99.6%	96.7%	93.1%	88.1%	86.9%	83.1%
SFY 2019	7/18 - 6/19	2,694	83.3%	87.0%	88.8%	92.9%	99.1%	96.7%	93.0%	90.3%	88.4%	
SFY 2020	7/19 - 6/20	3,204	80.5%	83.4%	84.1%	90.0%	98.3%					
SFYs 2015-2020	7/14 - 6/20	12,324	83.8%	86.2%	87.5%	92.8%	99.1%					Data not available

REGIONS	Entered WISe	N	MONTHS PRE-PERIOD				MONTHS POST PERIOD					
GREAT RIVERS			10-12	7-9	4-6	1-3	1-3	4-6	7-9	10-12	13-15	16-18
SFY 2015	7/14 - 6/15	---2	100.0%	100.0%	88.2%	100.0%	100.0%	93.8%	93.8%	100.0%	93.3%	91.7%
SFY 2016	7/15 - 6/16	---2	94.3%	85.7%	88.9%	95.5%	97.7%	93.6%	93.2%	95.2%	91.7%	88.1%
SFY 2017	7/16 - 6/17	---2	83.0%	87.8%	79.0%	94.4%	100.0%	98.8%	95.1%	96.3%	90.4%	91.7%
SFY 2018	7/17 - 6/18	---2	81.0%	89.3%	85.4%	94.1%	99.2%	96.5%	93.3%	94.1%	91.9%	88.9%
SFY 2019	7/18 - 6/19	---2	86.3%	87.6%	85.0%	93.4%	98.5%	97.7%	93.6%	89.0%	95.4%	
SFY 2020	7/19 - 6/20	---2	81.2%	85.9%	86.2%	89.9%	96.4%					
SFYs 2015-2020	7/14 - 6/20	944	84.8%	87.8%	85.0%	93.1%	98.3%					Data not available

GREATER COLUMBIA	Entered WISe	N	MONTHS PRE-PERIOD				MONTHS POST PERIOD					
			10-12	7-9	4-6	1-3	1-3	4-6	7-9	10-12	13-15	16-18
SFY 2015	7/14 - 6/15	---2	94.1%	93.3%	94.0%	97.6%	100.0%	98.4%	95.6%	92.0%	93.5%	91.3%
SFY 2016	7/15 - 6/16	---2	85.7%	85.6%	91.8%	96.3%	98.9%	97.1%	96.7%	93.7%	92.6%	90.9%
SFY 2017	7/16 - 6/17	---2	85.8%	91.1%	86.8%	94.5%	99.4%	96.1%	93.3%	91.9%	94.7%	82.6%
SFY 2018	7/17 - 6/18	---2	83.3%	81.8%	88.4%	91.5%	98.9%	97.3%	96.5%	91.4%	88.6%	81.2%
SFY 2019	7/18 - 6/19	---2	88.3%	89.6%	86.4%	88.8%	99.0%	96.7%	94.6%	89.3%	86.9%	
SFY 2020	7/19 - 6/20	---2	80.5%	84.6%	80.8%	89.5%	99.0%					
SFYs 2015-2020	7/14 - 6/20	1,996	86.0%	87.4%	87.7%	92.7%	99.2%					Data not available

KING COUNTY	Entered WISe	N	MONTHS PRE-PERIOD				MONTHS POST PERIOD					
			10-12	7-9	4-6	1-3	1-3	4-6	7-9	10-12	13-15	16-18
SFY 2015	7/14 - 6/15	0										
SFY 2016	7/15 - 6/16	---2	90.0%	87.5%	92.7%	94.1%	100.0%	94.2%	93.1%	91.8%	88.7%	87.9%
SFY 2017	7/16 - 6/17	---2	93.1%	91.3%	91.6%	98.3%	100.0%	97.1%	96.8%	92.6%	93.3%	91.3%
SFY 2018	7/17 - 6/18	---2	88.1%	92.5%	96.2%	97.0%	100.0%	97.8%	94.4%	93.8%	93.3%	86.8%
SFY 2019	7/18 - 6/19	---2	82.7%	88.5%	89.3%	95.4%	100.0%	97.7%	93.3%	89.9%	89.6%	
SFY 2020	7/19 - 6/20	---2	80.9%	83.2%	85.2%	92.0%	95.2%					
SFYs 2015-2020	7/14 - 6/20	1,496	86.3%	88.0%	90.2%	95.0%	98.8%					Data not available

WiSe Outcomes

JUNE 2021

Mental Health Services Received, if Psychotropic Medications Filled

NORTH CENTRAL															
SFY 2015	7/14 - 6/15	0													
SFY 2016	7/15 - 6/16	--- ²	87.5%	100.0%	100.0%	100.0%	100.0%	100.0%	100.0%	100.0%	100.0%	100.0%	80.0%	100.0%	
SFY 2017	7/16 - 6/17	--- ²	87.5%	75.0%	81.3%	100.0%	100.0%	100.0%	87.5%	86.7%	85.7%	90.9%			
SFY 2018	7/17 - 6/18	--- ²	89.8%	89.6%	85.7%	90.3%	100.0%	94.9%	93.8%	89.6%	92.1%	85.5%			
SFY 2019	7/18 - 6/19	--- ²	80.0%	91.4%	91.7%	95.9%	100.0%	97.9%	97.9%	95.3%	88.4%				
SFY 2020	7/19 - 6/20	--- ²	91.2%	88.1%	84.0%	95.3%	100.0%								
SFYs 2015-2020	7/14 - 6/20	--- ²	87.6%	88.8%	86.7%	94.5%	100.0%								<i>Data not available</i>
NORTH SOUND															
SFY 2015	7/14 - 6/15	--- ²	90.5%	91.3%	92.5%	97.4%	100.0%	96.4%	94.3%	93.1%	90.6%	88.4%			
SFY 2016	7/15 - 6/16	--- ²	82.5%	88.5%	87.8%	99.3%	98.6%	95.7%	95.6%	93.4%	88.0%	84.8%			
SFY 2017	7/16 - 6/17	--- ²	79.8%	85.1%	91.3%	98.1%	99.4%	98.1%	95.6%	93.1%	90.8%	91.5%			
SFY 2018	7/17 - 6/18	--- ²	87.4%	90.4%	91.6%	97.4%	99.4%	99.4%	97.3%	91.6%	89.3%	84.6%			
SFY 2019	7/18 - 6/19	--- ²	79.2%	83.8%	86.7%	93.2%	99.1%	96.7%	95.4%	91.5%	87.6%				
SFY 2020	7/19 - 6/20	--- ²	78.4%	77.8%	79.6%	91.1%	99.1%								
SFYs 2015-2020	7/14 - 6/20	1,669	82.1%	85.4%	87.5%	95.5%	99.2%								<i>Data not available</i>
PIERCE															
SFY 2015	7/14 - 6/15	--- ²	80.6%	82.0%	89.4%	90.4%	98.7%	98.6%	95.8%	86.6%	82.8%	82.3%			
SFY 2016	7/15 - 6/16	--- ²	81.0%	86.2%	83.3%	91.1%	100.0%	91.4%	80.0%	82.7%	77.6%	69.9%			
SFY 2017	7/16 - 6/17	--- ²	78.1%	78.4%	81.2%	90.4%	99.1%	96.3%	90.2%	84.4%	79.5%	81.6%			
SFY 2018	7/17 - 6/18	--- ²	70.5%	78.8%	80.5%	89.1%	100.0%	91.9%	81.1%	77.2%	79.5%	73.6%			
SFY 2019	7/18 - 6/19	--- ²	80.0%	83.8%	85.8%	93.0%	98.6%	94.2%	85.5%	84.8%	78.7%				
SFY 2020	7/19 - 6/20	--- ²	68.6%	85.3%	79.5%	79.1%	100.0%								
SFYs 2015-2020	7/14 - 6/20	1,565	75.7%	82.2%	82.7%	88.4%	99.5%								<i>Data not available</i>
SALISH															
SFY 2015	7/14 - 6/15	0													
SFY 2016	7/15 - 6/16	--- ²	100.0%	100.0%	100.0%	100.0%	100.0%	100.0%	100.0%	85.7%	90.0%	100.0%			
SFY 2017	7/16 - 6/17	--- ²	90.9%	85.7%	96.0%	100.0%	100.0%	96.7%	100.0%	100.0%	95.7%	94.4%			
SFY 2018	7/17 - 6/18	--- ²	84.6%	89.2%	92.7%	97.7%	100.0%	93.5%	93.9%	96.3%	93.5%	85.9%			
SFY 2019	7/18 - 6/19	--- ²	89.5%	88.1%	93.0%	97.8%	100.0%	97.4%	96.1%	91.5%	87.2%				
SFY 2020	7/19 - 6/20	--- ²	84.6%	87.7%	90.3%	93.3%	97.1%								
SFYs 2015-2020	7/14 - 6/20	--- ²	87.3%	88.5%	92.8%	96.7%	99.1%								<i>Data not available</i>
SOUTHWEST															
SFY 2015	7/14 - 6/15	--- ²	93.7%	89.9%	90.9%	96.7%	100.0%	95.7%	95.7%	95.2%	90.7%	91.9%			
SFY 2016	7/15 - 6/16	--- ²	84.0%	83.1%	84.2%	92.7%	97.9%	95.2%	92.3%	96.2%	88.2%	87.7%			
SFY 2017	7/16 - 6/17	--- ²	92.2%	88.9%	87.0%	91.0%	98.0%	96.9%	92.9%	94.7%	93.1%	85.3%			
SFY 2018	7/17 - 6/18	--- ²	90.9%	86.3%	90.3%	88.0%	100.0%	96.0%	94.5%	94.0%	86.6%	87.0%			
SFY 2019	7/18 - 6/19	--- ²	87.3%	94.4%	91.6%	92.3%	98.1%	99.1%	97.1%	90.3%	94.8%				
SFY 2020	7/19 - 6/20	--- ²	81.9%	81.8%	86.0%	90.3%	99.1%								
SFYs 2015-2020	7/14 - 6/20	--- ²	88.0%	87.5%	88.4%	91.8%	98.9%								<i>Data not available</i>

WISe Outcomes

JUNE 2021

Mental Health Services Received, if Psychotropic Medications Filled

SPOKANE												
SFY 2015	7/14 - 6/15	--- ¹	100.0%	50.0%	100.0%	100.0%	100.0%	100.0%	100.0%	66.7%	100.0%	100.0%
SFY 2016	7/15 - 6/16	--- ²	93.1%	100.0%	100.0%	100.0%	100.0%	100.0%	92.0%	87.0%	95.2%	100.0%
SFY 2017	7/16 - 6/17	--- ²	87.8%	90.5%	89.6%	91.9%	99.5%	98.4%	95.3%	93.5%	92.2%	91.3%
SFY 2018	7/17 - 6/18	--- ²	90.2%	89.7%	93.6%	92.9%	99.2%	98.4%	96.1%	88.1%	88.9%	86.6%
SFY 2019	7/18 - 6/19	--- ²	82.3%	85.2%	91.7%	91.7%	99.6%	96.4%	92.5%	93.5%	90.8%	
SFY 2020	7/19 - 6/20	--- ²	85.7%	85.9%	92.6%	93.5%	99.1%	Data not available				
SFYs 2015-2020	7/14 - 6/20	1,415	87.0%	88.2%	92.2%	92.8%	99.4%					

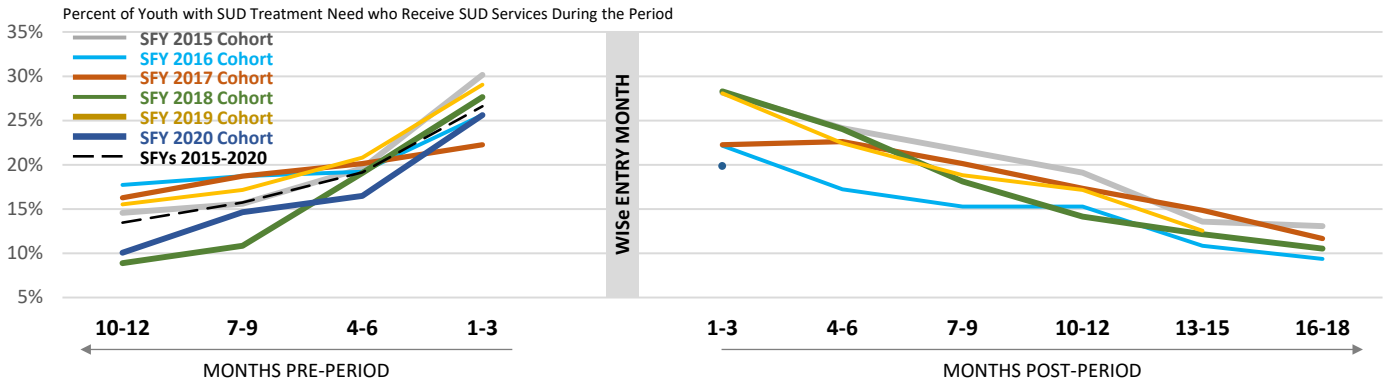
THURSTON-MASON												
SFY 2015	7/14 - 6/15	--- ²	80.3%	79.5%	80.5%	89.0%	97.9%	90.8%	89.1%	81.1%	70.5%	67.9%
SFY 2016	7/15 - 6/16	--- ²	77.1%	81.5%	74.6%	85.9%	97.5%	84.9%	76.4%	81.4%	77.3%	72.3%
SFY 2017	7/16 - 6/17	--- ²	84.0%	77.0%	79.7%	94.4%	100.0%	96.9%	90.8%	82.1%	80.5%	80.0%
SFY 2018	7/17 - 6/18	--- ²	66.1%	77.6%	79.2%	82.6%	100.0%	97.7%	86.3%	66.3%	64.3%	68.0%
SFY 2019	7/18 - 6/19	--- ²	76.2%	82.2%	91.8%	91.7%	96.4%	91.2%	75.5%	86.0%	81.6%	
SFY 2020	7/19 - 6/20	--- ²	80.5%	79.2%	80.0%	88.5%	97.9%	Data not available				
SFYs 2015-2020	7/14 - 6/20	1,240	77.5%	79.3%	80.5%	88.6%	98.4%					

Notes. ¹Primary suppression: To protect the privacy of individuals, cells in this data product that represent 10 or fewer persons are not displayed. ²Secondary suppression: Region-level numbers of youth in individual years are also suppressed because most could be used to recalculate suppressed values. Aggregate years are shown where possible at the region level.

WISe Outcomes

JUNE 2021

Substance Use Disorder Treatment Services Received, If Need Indicated



Cohort	Entered WISe	N	MONTHS PRE-PERIOD				MONTHS POST PERIOD					
			10-12	7-9	4-6	1-3	1-3	4-6	7-9	10-12	13-15	16-18
Percent of Youth with SUD Treatment Need who Receive SUD Services During the Period												
WASHINGTON												
SFY 2015	7/14 - 6/15	199	14.6%	15.6%	19.6%	30.2%	28.1%	24.1%	21.6%	19.1%	13.6%	13.1%
SFY 2016	7/15 - 6/16	203	17.7%	18.7%	19.2%	25.6%	22.2%	17.2%	15.3%	15.3%	10.8%	9.4%
SFY 2017	7/16 - 6/17	283	16.3%	18.7%	20.1%	22.3%	22.3%	22.6%	20.1%	17.3%	14.8%	11.7%
SFY 2018	7/17 - 6/18	304	8.9%	10.9%	19.1%	27.6%	28.3%	24.0%	18.1%	14.1%	12.2%	10.5%
SFY 2019	7/18 - 6/19	303	15.5%	17.2%	20.8%	29.0%	28.1%	22.4%	18.8%	17.2%	12.5%	
SFY 2020	7/19 - 6/20	328	10.1%	14.6%	16.5%	25.6%	19.8%					
SFYs 2015-2020	7/14 - 6/20	1,620	13.5%	15.7%	19.1%	26.6%	24.7%					Data not available

REGIONS	Entered WISe	N	MONTHS PRE-PERIOD				MONTHS POST PERIOD					
GREAT RIVERS			10-12	7-9	4-6	1-3	1-3	4-6	7-9	10-12	13-15	16-18
SFY 2015	7/14 - 6/15	---1	0.0%	20.0%	20.0%	20.0%	40.0%	20.0%	20.0%	40.0%	0.0%	0.0%
SFY 2016	7/15 - 6/16	---1	22.2%	33.3%	33.3%	22.2%	22.2%	33.3%	22.2%	33.3%	22.2%	11.1%
SFY 2017	7/16 - 6/17	---2	8.3%	16.7%	25.0%	33.3%	16.7%	25.0%	8.3%	16.7%	0.0%	0.0%
SFY 2018	7/17 - 6/18	---2	3.8%	7.7%	26.9%	50.0%	61.5%	42.3%	23.1%	23.1%	26.9%	26.9%
SFY 2019	7/18 - 6/19	---2	21.7%	21.7%	30.4%	43.5%	47.8%	34.8%	39.1%	30.4%	17.4%	
SFY 2020	7/19 - 6/20	---2	14.3%	23.8%	28.6%	38.1%	38.1%					
SFYs 2015-2020	7/14 - 6/20	96	12.5%	18.8%	28.1%	39.6%	42.7%					Data not available

GREATER COLUMBIA	Entered WISe	N	MONTHS PRE-PERIOD				MONTHS POST PERIOD					
			10-12	7-9	4-6	1-3	1-3	4-6	7-9	10-12	13-15	16-18
SFY 2015	7/14 - 6/15	---2	14.6%	14.6%	12.2%	22.0%	22.0%	24.4%	19.5%	14.6%	14.6%	12.2%
SFY 2016	7/15 - 6/16	---2	19.1%	17.0%	17.0%	27.7%	17.0%	10.6%	6.4%	6.4%	4.3%	8.5%
SFY 2017	7/16 - 6/17	---2	20.3%	20.3%	20.3%	29.7%	39.1%	39.1%	29.7%	29.7%	26.6%	20.3%
SFY 2018	7/17 - 6/18	---2	15.9%	25.0%	20.5%	34.1%	31.8%	27.3%	27.3%	13.6%	11.4%	9.1%
SFY 2019	7/18 - 6/19	---2	18.8%	23.4%	31.3%	46.9%	31.3%	29.7%	23.4%	26.6%	15.6%	
SFY 2020	7/19 - 6/20	---2	11.8%	25.5%	21.6%	33.3%	19.6%					
SFYs 2015-2020	7/14 - 6/20	311	17.0%	21.2%	21.2%	33.1%	27.7%					Data not available

KING COUNTY	Entered WISe	N	MONTHS PRE-PERIOD				MONTHS POST PERIOD					
			10-12	7-9	4-6	1-3	1-3	4-6	7-9	10-12	13-15	16-18
SFY 2015	7/14 - 6/15	0										
SFY 2016	7/15 - 6/16	---2	18.5%	22.2%	25.9%	22.2%	14.8%	14.8%	14.8%	7.4%	7.4%	7.4%
SFY 2017	7/16 - 6/17	---2	13.6%	18.2%	27.3%	18.2%	22.7%	27.3%	40.9%	18.2%	9.1%	4.5%
SFY 2018	7/17 - 6/18	---2	4.0%	4.0%	24.0%	16.0%	16.0%	16.0%	8.0%	0.0%	0.0%	0.0%
SFY 2019	7/18 - 6/19	---2	8.8%	5.9%	11.8%	11.8%	17.6%	14.7%	11.8%	8.8%	8.8%	
SFY 2020	7/19 - 6/20	---2	5.9%	8.8%	14.7%	8.8%	8.8%					
SFYs 2015-2020	7/14 - 6/20	142	9.9%	11.3%	19.7%	14.8%	15.5%					Data not available

WISe Outcomes

JUNE 2021

Substance Use Disorder Treatment Services Received, If Need Indicated

NORTH CENTRAL															
SFY 2015	7/14 - 6/15	0													
SFY 2016	7/15 - 6/16	--- ¹	33.3%	33.3%	33.3%	33.3%	0.0%	33.3%	33.3%	33.3%	33.3%	33.3%	33.3%	33.3%	33.3%
SFY 2017	7/16 - 6/17	--- ¹	0.0%	0.0%	0.0%	0.0%	25.0%	25.0%	0.0%	0.0%	0.0%	0.0%	0.0%	0.0%	0.0%
SFY 2018	7/17 - 6/18	--- ²	6.3%	0.0%	12.5%	25.0%	18.8%	6.3%	18.8%	25.0%	25.0%	18.8%	18.8%	18.8%	18.8%
SFY 2019	7/18 - 6/19	--- ¹	0.0%	0.0%	16.7%	33.3%	50.0%	16.7%	0.0%	16.7%	0.0%	16.7%	0.0%	16.7%	0.0%
SFY 2020	7/19 - 6/20	--- ¹	12.5%	12.5%	0.0%	25.0%	12.5%								
SFYs 2015-2020	7/14 - 6/20	--- ²	8.1%	5.4%	10.8%	24.3%	21.6%								<i>Data not available</i>
NORTH SOUND															
SFY 2015	7/14 - 6/15	--- ²	7.9%	13.2%	13.2%	28.9%	26.3%	21.1%	23.7%	23.7%	23.7%	21.1%	26.3%	21.1%	23.7%
SFY 2016	7/15 - 6/16	--- ²	19.4%	25.8%	16.1%	19.4%	22.6%	9.7%	9.7%	12.9%	9.7%	9.7%	22.6%	9.7%	9.7%
SFY 2017	7/16 - 6/17	--- ²	7.7%	19.2%	34.6%	23.1%	26.9%	26.9%	30.8%	15.4%	23.1%	15.4%	26.9%	26.9%	30.8%
SFY 2018	7/17 - 6/18	--- ²	6.3%	9.4%	25.0%	43.8%	37.5%	25.0%	15.6%	15.6%	12.5%	15.6%	37.5%	25.0%	15.6%
SFY 2019	7/18 - 6/19	--- ²	9.5%	11.9%	11.9%	14.3%	16.7%	14.3%	9.5%	11.9%	2.4%	16.7%	14.3%	9.5%	11.9%
SFY 2020	7/19 - 6/20	--- ²	11.1%	22.2%	16.7%	18.5%	11.1%								
SFYs 2015-2020	7/14 - 6/20	223	10.3%	17.0%	18.4%	23.8%	22.0%								<i>Data not available</i>
PIERCE															
SFY 2015	7/14 - 6/15	--- ²	9.7%	9.7%	12.9%	12.9%	9.7%	6.5%	16.1%	6.5%	3.2%	6.5%	9.7%	6.5%	16.1%
SFY 2016	7/15 - 6/16	--- ²	14.3%	14.3%	11.4%	20.0%	22.9%	20.0%	17.1%	14.3%	8.6%	8.6%	22.9%	20.0%	17.1%
SFY 2017	7/16 - 6/17	--- ²	22.4%	24.1%	19.0%	12.1%	17.2%	8.6%	8.6%	10.3%	6.9%	5.2%	17.2%	8.6%	8.6%
SFY 2018	7/17 - 6/18	--- ²	6.4%	0.0%	2.1%	0.0%	8.5%	8.5%	6.4%	0.0%	6.4%	6.4%	8.5%	8.5%	6.4%
SFY 2019	7/18 - 6/19	--- ²	10.7%	7.1%	21.4%	28.6%	21.4%	14.3%	14.3%	10.7%	14.3%	14.3%	21.4%	14.3%	14.3%
SFY 2020	7/19 - 6/20	--- ²	6.3%	3.1%	18.8%	12.5%	12.5%								
SFYs 2015-2020	7/14 - 6/20	231	12.6%	10.8%	13.9%	13.0%	15.2%								<i>Data not available</i>
SALISH															
SFY 2015	7/14 - 6/15	0													
SFY 2016	7/15 - 6/16	--- ¹	0.0%	100.0%	100.0%	100.0%	100.0%	0.0%	0.0%	0.0%	0.0%	0.0%	100.0%	0.0%	0.0%
SFY 2017	7/16 - 6/17	--- ¹	0.0%	0.0%	0.0%	40.0%	20.0%	40.0%	20.0%	20.0%	20.0%	20.0%	20.0%	40.0%	20.0%
SFY 2018	7/17 - 6/18	--- ²	20.0%	33.3%	33.3%	40.0%	26.7%	40.0%	26.7%	33.3%	13.3%	13.3%	26.7%	40.0%	26.7%
SFY 2019	7/18 - 6/19	--- ²	27.8%	38.9%	38.9%	55.6%	72.2%	44.4%	38.9%	33.3%	27.8%	72.2%	44.4%	38.9%	33.3%
SFY 2020	7/19 - 6/20	--- ²	18.2%	27.3%	31.8%	40.9%	22.7%								
SFYs 2015-2020	7/14 - 6/20	61	19.7%	31.1%	32.8%	45.9%	39.3%								<i>Data not available</i>
SOUTHWEST															
SFY 2015	7/14 - 6/15	--- ²	7.4%	7.4%	14.8%	33.3%	40.7%	25.9%	22.2%	25.9%	18.5%	18.5%	40.7%	25.9%	22.2%
SFY 2016	7/15 - 6/16	--- ²	11.1%	11.1%	11.1%	38.9%	55.6%	44.4%	38.9%	38.9%	33.3%	27.8%	55.6%	44.4%	38.9%
SFY 2017	7/16 - 6/17	--- ²	10.5%	10.5%	15.8%	21.1%	26.3%	21.1%	15.8%	5.3%	10.5%	15.8%	26.3%	21.1%	15.8%
SFY 2018	7/17 - 6/18	--- ²	0.0%	6.7%	26.7%	33.3%	26.7%	40.0%	26.7%	33.3%	20.0%	20.0%	26.7%	40.0%	26.7%
SFY 2019	7/18 - 6/19	--- ²	16.7%	22.2%	22.2%	22.2%	27.8%	33.3%	22.2%	16.7%	16.7%	27.8%	33.3%	22.2%	22.2%
SFY 2020	7/19 - 6/20	--- ²	15.4%	11.5%	11.5%	38.5%	30.8%								
SFYs 2015-2020	7/14 - 6/20	123	10.6%	11.4%	16.3%	31.7%	35.0%								<i>Data not available</i>

WiSe Outcomes

JUNE 2021

Substance Use Disorder Treatment Services Received, If Need Indicated

SPOKANE												
SFY 2015	7/14 - 6/15	--- ¹	33.3%	33.3%	100.0%	100.0%	33.3%	0.0%	0.0%	0.0%	0.0%	0.0%
SFY 2016	7/15 - 6/16	--- ²	9.1%	9.1%	18.2%	27.3%	18.2%	18.2%	18.2%	9.1%	0.0%	0.0%
SFY 2017	7/16 - 6/17	--- ²	2.2%	4.4%	4.4%	8.9%	6.7%	11.1%	11.1%	15.6%	8.9%	2.2%
SFY 2018	7/17 - 6/18	--- ²	9.4%	7.5%	13.2%	15.1%	22.6%	17.0%	13.2%	7.5%	7.5%	3.8%
SFY 2019	7/18 - 6/19	--- ²	14.0%	16.0%	14.0%	16.0%	20.0%	22.0%	10.0%	8.0%	8.0%	
SFY 2020	7/19 - 6/20	--- ²	3.9%	2.0%	5.9%	23.5%	19.6%					
SFYs 2015-2020	7/14 - 6/20	213	8.0%	8.0%	11.3%	17.8%	17.8%	Data not available				

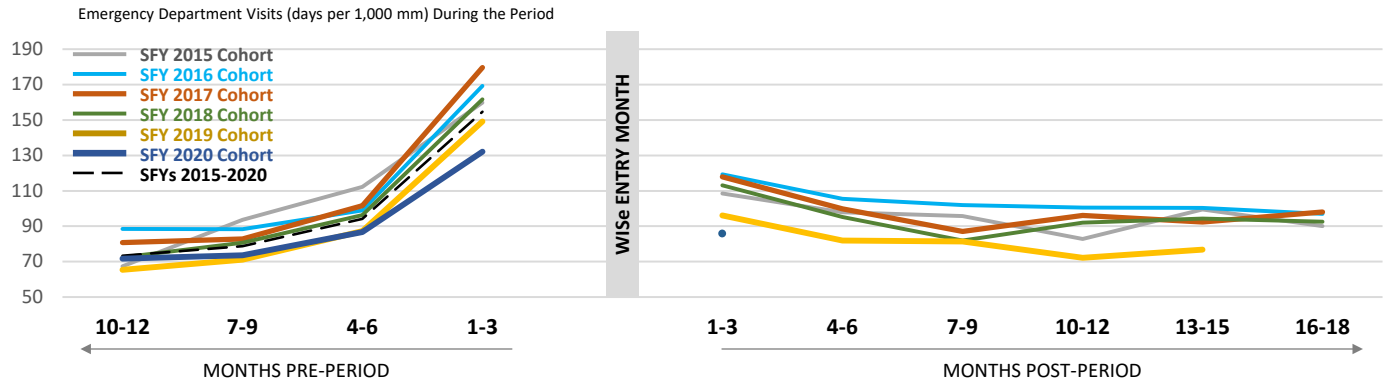
THURSTON-MASON												
SFY 2015	7/14 - 6/15	--- ²	25.9%	24.1%	31.5%	42.6%	37.0%	37.0%	25.9%	22.2%	11.1%	11.1%
SFY 2016	7/15 - 6/16	--- ²	23.8%	14.3%	28.6%	28.6%	14.3%	9.5%	14.3%	23.8%	14.3%	0.0%
SFY 2017	7/16 - 6/17	--- ²	39.3%	39.3%	35.7%	46.4%	14.3%	21.4%	21.4%	17.9%	21.4%	25.0%
SFY 2018	7/17 - 6/18	--- ²	12.9%	19.4%	29.0%	48.4%	41.9%	38.7%	29.0%	25.8%	16.1%	9.7%
SFY 2019	7/18 - 6/19	--- ²	25.0%	20.0%	10.0%	30.0%	20.0%	0.0%	25.0%	15.0%	20.0%	
SFY 2020	7/19 - 6/20	--- ²	10.3%	10.3%	13.8%	31.0%	34.5%					
SFYs 2015-2020	7/14 - 6/20	183	23.0%	21.9%	26.2%	39.3%	29.5%	Data not available				

Notes. ¹Primary suppression: To protect the privacy of individuals, cells in this data product that represent 10 or fewer persons are not displayed. ²Secondary suppression: Region-level numbers of youth in individual years are also suppressed because most could be used to recalculate suppressed values. Aggregate years are shown where possible at the region level.

WISe Outcomes

JUNE 2021

Emergency Department Visits



Cohort	Entered Wise	N	MONTHS PRE-PERIOD				MONTHS POST PERIOD					
			10-12	7-9	4-6	1-3	1-3	4-6	7-9	10-12	13-15	16-18
WASHINGTON			Emergency Department Visits (days per 1,000 mm) During the Period									
SFY 2015	7/14 - 6/15	881	67.4	93.6	112.3	159.8	108.5	97.9	95.7	82.7	99.5	90.1
SFY 2016	7/15 - 6/16	1,365	88.5	88.3	99.0	169.3	119.2	105.5	102.0	100.5	100.3	96.9
SFY 2017	7/16 - 6/17	1,867	80.8	82.7	101.5	179.6	117.8	99.9	87.1	96.1	92.4	98.1
SFY 2018	7/17 - 6/18	2,313	72.4	80.7	96.2	161.7	113.2	95.2	81.9	92.1	94.4	92.5
SFY 2019	7/18 - 6/19	2,694	65.4	71.1	87.3	149.2	96.2	81.9	81.5	72.2	76.8	
SFY 2020	7/19 - 6/20	3,204	71.7	73.6	86.8	132.1	85.8					
SFYs 2015-2020	7/14 - 6/20	12,324	73.3	78.8	94.1	154.7	103.4					Data not available

REGIONS	Entered Wise	N	MONTHS PRE-PERIOD				MONTHS POST PERIOD					
GREAT RIVERS			10-12	7-9	4-6	1-3	1-3	4-6	7-9	10-12	13-15	16-18
SFY 2015	7/14 - 6/15	---2	63.5	90.9	60.6	202.9	108.7	106.1	75.8	90.9	151.5	121.2
SFY 2016	7/15 - 6/16	---2	92.1	64.9	88.6	115.2	82.3	71.7	111.8	121.2	111.1	109.6
SFY 2017	7/16 - 6/17	---2	85.5	96.9	126.0	228.3	176.9	143.6	125.0	161.4	95.6	79.4
SFY 2018	7/17 - 6/18	---2	87.0	58.8	67.4	143.4	139.3	81.2	76.4	84.2	112.9	111.1
SFY 2019	7/18 - 6/19	---2	45.5	28.3	53.1	98.1	64.4	56.0	62.6	51.2	66.4	
SFY 2020	7/19 - 6/20	---2	72.2	75.9	65.3	105.6	61.1					
SFYs 2015-2020	7/14 - 6/20	944	71.8	62.4	72.8	131.8	97.6					Data not available

GREATER COLUMBIA	Entered Wise	N	MONTHS PRE-PERIOD				MONTHS POST PERIOD					
			10-12	7-9	4-6	1-3	1-3	4-6	7-9	10-12	13-15	16-18
SFY 2015	7/14 - 6/15	---2	81.5	123.1	140.8	182.5	119.3	101.1	120.7	128.2	108.0	124.1
SFY 2016	7/15 - 6/16	---2	97.2	102.1	117.1	198.6	155.8	128.9	126.0	119.7	138.5	129.9
SFY 2017	7/16 - 6/17	---2	82.8	100.2	90.8	131.5	103.0	112.7	85.9	105.1	104.7	105.7
SFY 2018	7/17 - 6/18	---2	74.4	98.9	99.1	149.3	115.8	93.2	108.4	96.2	65.2	63.3
SFY 2019	7/18 - 6/19	---2	92.6	82.9	100.3	188.3	109.3	97.8	108.9	85.0	91.1	
SFY 2020	7/19 - 6/20	---2	75.7	104.4	95.0	140.5	97.6					
SFYs 2015-2020	7/14 - 6/20	1,996	83.7	99.8	103.8	162.8	114.7					Data not available

KING COUNTY	Entered Wise	N	MONTHS PRE-PERIOD				MONTHS POST PERIOD					
			10-12	7-9	4-6	1-3	1-3	4-6	7-9	10-12	13-15	16-18
SFY 2015	7/14 - 6/15	0										
SFY 2016	7/15 - 6/16	---2	116.5	109.8	104.4	91.9	108.5	112.2	100.0	106.3	91.2	102.7
SFY 2017	7/16 - 6/17	---2	80.2	60.4	83.8	178.1	130.7	75.2	82.5	87.5	102.0	64.9
SFY 2018	7/17 - 6/18	---2	87.9	86.4	128.1	156.4	158.9	101.9	53.2	72.5	99.6	80.6
SFY 2019	7/18 - 6/19	---2	61.9	64.8	100.0	135.0	94.8	82.9	63.8	83.3	82.6	
SFY 2020	7/19 - 6/20	---2	71.1	59.0	76.1	89.4	56.5					
SFYs 2015-2020	7/14 - 6/20	1,496	79.0	71.6	93.8	121.6	96.7					Data not available

WISe Outcomes

JUNE 2021

Emergency Department Visits

NORTH CENTRAL															
SFY 2015	7/14 - 6/15	0													
SFY 2016	7/15 - 6/16	--- ²	83.3	33.3	83.3	83.3	83.3	66.7	16.7	116.7	87.7	50.0			
SFY 2017	7/16 - 6/17	--- ²	76.4	41.7	55.6	97.2	69.4	48.6	85.1	78.0	87.0	74.1			
SFY 2018	7/17 - 6/18	--- ²	62.0	57.3	66.7	108.6	67.2	72.7	85.2	66.7	106.8	88.5			
SFY 2019	7/18- 6/19	--- ²	32.1	45.6	53.2	120.4	80.5	61.3	50.5	52.0	35.0				
SFY 2020	7/19- 6/20	--- ²	56.1	63.3	43.5	133.9	58.5								
SFYs 2015-2020	7/14 - 6/20	--- ²	53.9	52.3	56.3	116.2	70.1								<i>Data not available</i>
NORTH SOUND															
SFY 2015	7/14 - 6/15	--- ²	57.4	104.0	135.0	162.7	127.0	94.1	89.6	59.8	114.0	87.1			
SFY 2016	7/15 - 6/16	--- ²	74.5	87.7	121.8	251.7	111.7	110.0	75.0	91.5	82.9	84.2			
SFY 2017	7/16 - 6/17	--- ²	64.7	85.2	123.7	210.3	121.1	95.9	77.3	98.0	115.2	125.4			
SFY 2018	7/17 - 6/18	--- ²	74.2	97.3	100.6	130.5	108.8	74.5	67.5	103.9	81.1	107.1			
SFY 2019	7/18- 6/19	--- ²	49.7	71.7	96.9	133.5	97.3	72.2	70.9	55.1	67.6				
SFY 2020	7/19- 6/20	--- ²	72.9	79.9	83.9	141.8	77.7								
SFYs 2015-2020	7/14 - 6/20	1,669	65.2	84.5	104.7	163.2	101.7								<i>Data not available</i>
PIERCE															
SFY 2015	7/14 - 6/15	--- ²	54.3	91.0	109.4	182.0	105.6	111.1	101.7	91.8	64.5	59.7			
SFY 2016	7/15 - 6/16	--- ²	63.9	79.5	74.5	160.4	122.5	103.3	92.6	106.1	96.7	81.4			
SFY 2017	7/16 - 6/17	--- ²	78.4	77.7	94.1	192.6	124.1	113.7	87.9	99.9	93.1	120.6			
SFY 2018	7/17 - 6/18	--- ²	63.1	72.6	93.2	200.4	107.1	87.3	73.0	80.3	104.6	96.8			
SFY 2019	7/18- 6/19	--- ²	65.1	71.2	57.6	150.2	77.7	60.4	102.0	81.8	90.1				
SFY 2020	7/19- 6/20	--- ²	62.1	56.9	87.2	136.1	108.4								
SFYs 2015-2020	7/14 - 6/20	1,565	65.2	72.0	84.6	168.4	106.7								<i>Data not available</i>
SALISH															
SFY 2015	7/14 - 6/15	0													
SFY 2016	7/15 - 6/16	--- ²	92.6	185.2	98.0	157.4	129.6	166.7	129.6	74.1	55.6	111.1			
SFY 2017	7/16 - 6/17	--- ²	96.3	163.0	177.8	224.6	137.7	244.4	174.1	89.4	136.8	81.1			
SFY 2018	7/17 - 6/18	--- ²	84.0	82.1	69.5	170.3	170.3	123.2	83.3	139.3	126.6	106.1			
SFY 2019	7/18- 6/19	--- ²	60.0	73.0	107.5	156.8	141.1	107.3	93.2	68.5	109.2				
SFY 2020	7/19- 6/20	--- ²	87.2	83.8	113.0	178.5	108.8								
SFYs 2015-2020	7/14 - 6/20	--- ²	78.9	89.4	105.5	172.8	135.8								<i>Data not available</i>
SOUTHWEST															
SFY 2015	7/14 - 6/15	--- ²	94.0	86.8	92.1	197.9	108.5	95.6	125.0	72.0	146.7	112.9			
SFY 2016	7/15 - 6/16	--- ²	64.3	57.9	67.8	232.4	144.8	108.3	96.7	84.6	69.8	83.3			
SFY 2017	7/16 - 6/17	--- ²	99.2	76.4	76.2	227.3	99.5	71.8	52.0	48.3	64.2	106.1			
SFY 2018	7/17 - 6/18	--- ²	34.1	63.6	88.2	194.1	72.6	49.9	65.3	100.7	70.0	88.2			
SFY 2019	7/18- 6/19	--- ²	43.7	75.9	67.0	150.0	61.1	66.7	82.9	49.5	53.6				
SFY 2020	7/19- 6/20	--- ²	54.9	43.7	94.0	131.3	93.3								
SFYs 2015-2020	7/14 - 6/20	--- ²	63.1	66.2	81.1	183.7	94.4								<i>Data not available</i>

WISe Outcomes

JUNE 2021

Emergency Department Visits

SPOKANE												
SFY 2015	7/14 - 6/15	--- ¹	0.0	200.0	266.7	0.0	0.0	133.3	66.7	133.3	66.7	0.0
SFY 2016	7/15 - 6/16	--- ²	197.4	140.4	144.1	236.8	184.2	184.2	240.7	232.3	155.6	88.9
SFY 2017	7/16 - 6/17	--- ²	88.8	95.9	130.5	196.2	140.4	82.7	84.3	114.2	85.3	120.7
SFY 2018	7/17 - 6/18	--- ²	79.2	90.7	110.8	186.6	117.1	141.8	90.0	103.7	111.4	108.8
SFY 2019	7/18- 6/19	--- ²	93.1	95.2	105.9	187.8	120.6	106.2	83.6	95.8	78.0	
SFY 2020	7/19- 6/20	--- ²	80.3	82.1	94.7	153.6	107.7	Data not available				
SFYs 2015-2020	7/14 - 6/20	1,415	88.1	92.5	110.7	181.4	121.4					

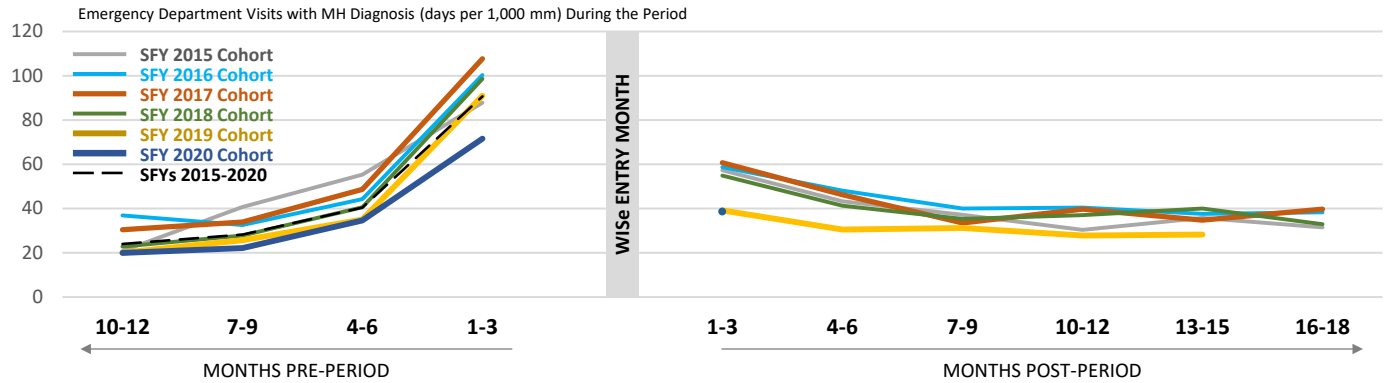
THURSTON-MASON												
SFY 2015	7/14 - 6/15	--- ²	57.4	63.5	85.3	100.9	90.0	89.3	60.9	59.6	72.5	67.6
SFY 2016	7/15 - 6/16	--- ²	70.0	66.3	81.3	102.5	63.7	49.8	83.8	44.8	87.8	76.8
SFY 2017	7/16 - 6/17	--- ²	71.2	49.9	78.1	130.0	69.7	85.0	89.2	57.8	55.3	44.3
SFY 2018	7/17 - 6/18	--- ²	63.6	63.7	104.6	138.3	64.2	80.3	91.4	69.6	75.8	79.0
SFY 2019	7/18- 6/19	--- ²	66.1	78.5	92.6	109.4	82.7	88.5	76.1	60.5	61.1	
SFY 2020	7/19- 6/20	--- ²	72.0	70.3	100.9	141.3	90.3	Data not available				
SFYs 2015-2020	7/14 - 6/20	1,240	67.0	65.0	91.3	122.7	78.2					

Notes. ¹Primary suppression: To protect the privacy of individuals, cells in this data product that represent 10 or fewer persons are not displayed. ²Secondary suppression: Region-level numbers of youth in individual years are also suppressed because most could be used to recalculate suppressed values. Aggregate years are shown where possible at the region level.

WISe Outcomes

JUNE 2021

Emergency Department Visits with Mental Health Diagnosis



Cohort	Entered Wise	N	MONTHS PRE-PERIOD				MONTHS POST PERIOD					
			10-12	7-9	4-6	1-3	1-3	4-6	7-9	10-12	13-15	16-18
WASHINGTON			ED Visits with MH Diagnosis (days per 1,000 mm) During the Period									
SFY 2015	7/14 - 6/15	881	20.8	40.7	55.4	87.8	57.3	43.3	37.2	30.3	35.8	31.5
SFY 2016	7/15 - 6/16	1,365	36.8	32.6	44.3	100.3	58.7	48.1	40.0	40.5	37.5	38.3
SFY 2017	7/16 - 6/17	1,867	30.4	33.9	48.7	107.7	60.7	46.3	33.5	39.7	34.7	39.7
SFY 2018	7/17 - 6/18	2,313	22.8	27.7	40.6	98.6	54.9	41.3	35.3	37.1	39.9	33.0
SFY 2019	7/18 - 6/19	2,694	20.0	25.7	35.0	91.0	39.2	30.5	31.2	27.8	28.2	
SFY 2020	7/19 - 6/20	3,204	19.9	22.1	34.5	71.6	38.5					
SFYs 2015-2020	7/14 - 6/20	12,324	24.0	28.2	40.5	90.7	48.6					Data not available

REGIONS	Entered Wise	N	MONTHS PRE-PERIOD				MONTHS POST PERIOD					
GREAT RIVERS			10-12	7-9	4-6	1-3	1-3	4-6	7-9	10-12	13-15	16-18
SFY 2015	7/14 - 6/15	---2	15.9	15.2	15.2	144.9	72.5	75.8	0.0	30.3	60.6	45.5
SFY 2016	7/15 - 6/16	---2	39.5	13.0	21.1	49.4	53.5	33.8	29.5	47.6	44.4	48.2
SFY 2017	7/16 - 6/17	---2	26.1	28.5	27.1	107.6	102.6	76.9	52.1	71.4	41.3	34.4
SFY 2018	7/17 - 6/18	---2	10.9	5.3	29.4	69.7	46.4	25.4	27.8	32.8	54.7	37.0
SFY 2019	7/18 - 6/19	---2	9.1	8.9	20.6	51.9	27.2	18.7	26.2	19.0	30.2	
SFY 2020	7/19 - 6/20	---2	14.4	28.3	22.8	58.6	19.5					
SFYs 2015-2020	7/14 - 6/20	944	16.1	16.9	23.9	67.3	42.9					Data not available

GREATER COLUMBIA	Entered Wise	N	MONTHS PRE-PERIOD				MONTHS POST PERIOD					
			10-12	7-9	4-6	1-3	1-3	4-6	7-9	10-12	13-15	16-18
SFY 2015	7/14 - 6/15	---2	15.0	53.7	71.3	89.5	54.4	31.9	45.0	53.1	29.8	40.7
SFY 2016	7/15 - 6/16	---2	30.3	24.6	42.3	106.3	61.9	47.6	25.9	38.5	26.3	36.8
SFY 2017	7/16 - 6/17	---2	22.8	27.2	23.4	51.0	35.7	29.3	17.6	29.7	20.3	24.8
SFY 2018	7/17 - 6/18	---2	5.0	17.3	17.5	53.5	43.9	25.4	34.4	20.4	15.7	6.9
SFY 2019	7/18 - 6/19	---2	19.0	19.8	19.9	75.2	23.8	27.2	18.4	24.1	18.0	
SFY 2020	7/19 - 6/20	---2	15.3	20.2	19.7	59.9	23.0					
SFYs 2015-2020	7/14 - 6/20	1,996	17.5	24.6	28.2	70.0	37.7					Data not available

KING COUNTY	Entered Wise	N	MONTHS PRE-PERIOD				MONTHS POST PERIOD					
			10-12	7-9	4-6	1-3	1-3	4-6	7-9	10-12	13-15	16-18
SFY 2015	7/14 - 6/15	0										
SFY 2016	7/15 - 6/16	---2	68.0	44.9	56.1	49.8	58.2	45.8	61.9	66.0	45.6	48.8
SFY 2017	7/16 - 6/17	---2	38.8	32.8	45.7	104.6	85.0	34.3	28.1	47.9	44.2	24.6
SFY 2018	7/17 - 6/18	---2	31.1	33.5	77.2	99.7	99.7	60.4	19.5	32.6	48.9	27.8
SFY 2019	7/18 - 6/19	---2	29.5	18.1	53.5	86.6	40.6	29.0	38.0	45.0	39.4	
SFY 2020	7/19 - 6/20	---2	14.9	14.8	27.6	37.0	20.6					
SFYs 2015-2020	7/14 - 6/20	1,496	31.5	24.8	46.9	68.2	49.9					Data not available

WISe Outcomes

JUNE 2021

Emergency Department Visits with Mental Health Diagnosis

NORTH CENTRAL															
SFY 2015	7/14 - 6/15	0													
SFY 2016	7/15 - 6/16	--- ²	0.0	16.7	33.3	83.3	16.7	66.7	16.7	33.3	17.5	33.3			
SFY 2017	7/16 - 6/17	--- ²	34.7	34.7	20.8	76.4	62.5	27.8	14.2	7.1	7.2	29.6			
SFY 2018	7/17 - 6/18	--- ²	31.0	23.4	25.6	61.7	34.8	35.1	45.1	28.2	52.1	36.5			
SFY 2019	7/18- 6/19	--- ²	9.9	24.0	16.2	81.0	34.5	18.5	20.0	11.8	0.0				
SFY 2020	7/19- 6/20	--- ²	24.9	30.9	12.0	77.4	35.1								
SFYs 2015-2020	7/14 - 6/20	--- ²	22.0	26.3	19.1	74.1	36.9								
							<i>Data not available</i>								
NORTH SOUND															
SFY 2015	7/14 - 6/15	--- ²	28.7	53.1	82.8	100.4	57.9	42.9	33.3	19.2	40.9	30.5			
SFY 2016	7/15 - 6/16	--- ²	28.4	32.5	67.7	161.7	61.7	60.0	36.7	31.1	35.3	35.8			
SFY 2017	7/16 - 6/17	--- ²	30.4	40.4	85.9	140.2	68.4	47.2	32.9	35.1	48.5	52.0			
SFY 2018	7/17 - 6/18	--- ²	36.4	51.6	68.2	82.3	62.1	36.2	28.7	54.8	36.9	52.8			
SFY 2019	7/18- 6/19	--- ²	16.6	37.2	47.1	92.2	41.3	39.8	35.9	24.9	32.9				
SFY 2020	7/19- 6/20	--- ²	27.8	32.2	37.4	82.6	40.0								
SFYs 2015-2020	7/14 - 6/20	1,669	26.9	39.4	59.2	104.1	51.8								
							<i>Data not available</i>								
PIERCE															
SFY 2015	7/14 - 6/15	--- ²	12.9	42.3	66.2	120.6	63.4	82.7	59.1	29.0	29.2	27.4			
SFY 2016	7/15 - 6/16	--- ²	25.9	39.8	37.2	109.9	73.9	61.6	37.0	34.1	50.8	25.2			
SFY 2017	7/16 - 6/17	--- ²	15.9	25.0	40.5	119.1	52.6	58.7	34.9	42.3	39.1	48.8			
SFY 2018	7/17 - 6/18	--- ²	25.5	34.1	31.1	130.8	55.4	28.8	26.1	31.9	39.7	28.6			
SFY 2019	7/18- 6/19	--- ²	16.6	25.0	7.3	111.5	31.8	20.5	28.1	28.1	32.1				
SFY 2020	7/19- 6/20	--- ²	11.8	10.7	27.1	64.4	47.9								
SFYs 2015-2020	7/14 - 6/20	1,565	18.0	26.8	31.2	106.3	51.8								
							<i>Data not available</i>								
SALISH															
SFY 2015	7/14 - 6/15	0													
SFY 2016	7/15 - 6/16	--- ²	37.0	148.1	58.8	83.3	18.5	55.6	55.6	37.0	37.0	74.1			
SFY 2017	7/16 - 6/17	--- ²	51.9	111.1	133.3	173.9	87.0	96.3	81.5	40.7	68.4	45.0			
SFY 2018	7/17 - 6/18	--- ²	39.5	26.6	31.2	112.7	83.9	58.0	51.5	62.2	76.4	65.7			
SFY 2019	7/18- 6/19	--- ²	15.2	28.1	36.4	85.1	61.7	45.2	35.8	25.9	41.4				
SFY 2020	7/19- 6/20	--- ²	23.9	18.8	42.1	105.1	62.6								
SFYs 2015-2020	7/14 - 6/20	--- ²	27.6	34.8	45.2	105.3	67.8								
							<i>Data not available</i>								
SOUTHWEST															
SFY 2015	7/14 - 6/15	--- ²	29.9	30.8	35.2	114.6	64.6	38.8	39.1	24.0	69.3	55.1			
SFY 2016	7/15 - 6/16	--- ²	29.2	19.3	8.1	152.1	91.2	47.4	45.8	41.0	28.4	36.5			
SFY 2017	7/16 - 6/17	--- ²	31.7	36.3	33.3	163.2	41.7	37.0	26.0	21.7	24.7	50.5			
SFY 2018	7/17 - 6/18	--- ²	10.5	28.0	34.3	148.4	52.2	27.2	44.3	60.0	48.3	44.1			
SFY 2019	7/18- 6/19	--- ²	11.2	19.7	36.4	107.4	29.6	25.9	47.1	24.8	27.8				
SFY 2020	7/19- 6/20	--- ²	15.2	14.6	60.3	89.8	67.4								
SFYs 2015-2020	7/14 - 6/20	--- ²	20.2	23.9	36.6	126.4	56.8								
							<i>Data not available</i>								

WISe Outcomes

JUNE 2021

Emergency Department Visits with Mental Health Diagnosis

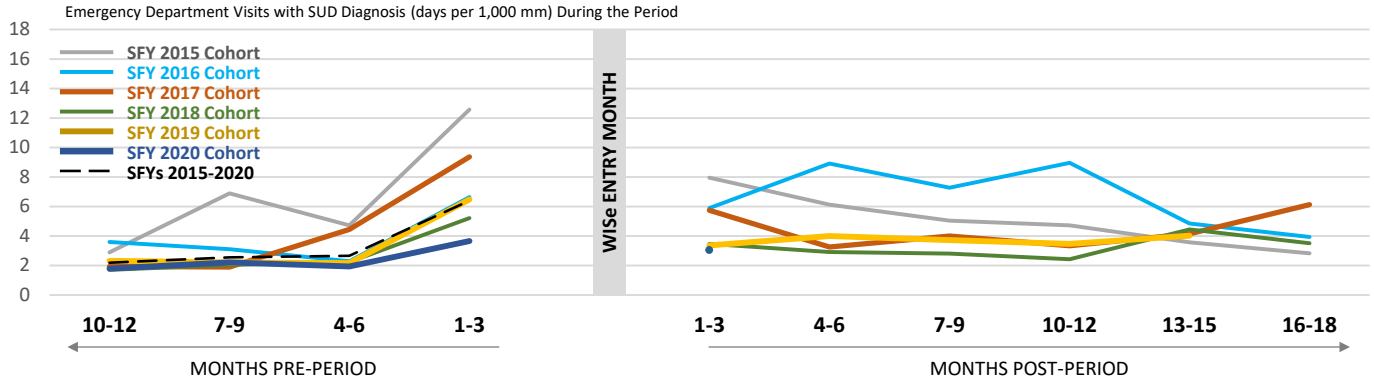
SPOKANE												
SFY 2015	7/14 - 6/15	--- ¹	0.0	0.0	0.0	0.0	0.0	133.3	0.0	0.0	0.0	0.0
SFY 2016	7/15 - 6/16	--- ²	92.1	61.4	72.1	157.9	96.5	105.3	166.7	151.5	100.0	77.8
SFY 2017	7/16 - 6/17	--- ²	45.1	43.7	81.4	130.8	85.3	55.6	45.4	65.6	41.3	66.0
SFY 2018	7/17 - 6/18	--- ²	26.7	30.4	45.4	131.4	59.0	77.5	41.6	42.9	43.8	34.5
SFY 2019	7/18- 6/19	--- ²	33.0	38.4	50.2	130.3	61.7	39.0	32.1	35.9	25.1	
SFY 2020	7/19- 6/20	--- ²	37.6	31.0	44.4	96.6	56.0	<i>Data not available</i>				
SFYs 2015-2020	7/14 - 6/20	1,415	36.2	35.8	53.7	122.8	64.6					
THURSTON-MASON												
SFY 2015	7/14 - 6/15	--- ²	20.7	28.6	31.0	36.6	50.9	25.5	22.8	24.5	20.1	12.6
SFY 2016	7/15 - 6/16	--- ²	24.7	24.1	43.7	46.0	13.1	15.3	18.3	5.8	29.9	30.9
SFY 2017	7/16 - 6/17	--- ²	30.0	19.6	27.8	73.3	26.5	36.7	35.4	15.3	20.7	16.0
SFY 2018	7/17 - 6/18	--- ²	21.2	22.5	51.9	88.7	15.6	24.4	44.8	22.0	15.2	27.0
SFY 2019	7/18- 6/19	--- ²	27.5	33.1	52.9	57.3	36.2	33.9	35.4	16.1	25.0	
SFY 2020	7/19- 6/20	--- ²	16.3	24.9	57.0	85.2	39.8	<i>Data not available</i>				
SFYs 2015-2020	7/14 - 6/20	1,240	22.4	25.1	44.4	66.4	31.7					

Notes. ¹Primary suppression: To protect the privacy of individuals, cells in this data product that represent 10 or fewer persons are not displayed. ²Secondary suppression: Region-level numbers of youth in individual years are also suppressed because most could be used to recalculate suppressed values. Aggregate years are shown where possible at the region level.

WISe Outcomes

JUNE 2021

Emergency Department Visits with Substance Use Disorder Diagnosis



Cohort	Entered WISE	N	MONTHS PRE-PERIOD				MONTHS POST PERIOD					
			10-12	7-9	4-6	1-3	1-3	4-6	7-9	10-12	13-15	16-18
ED Visits with SUD Diagnosis (days per 1,000 mm) During the Period												
WASHINGTON	Entered WISE											
SFY 2015	7/14 - 6/15	881	2.9	6.9	4.7	12.6	8.0	6.1	5.0	4.7	3.6	2.8
SFY 2016	7/15 - 6/16	1,365	3.6	3.1	2.3	6.6	5.9	8.9	7.3	9.0	4.8	3.9
SFY 2017	7/16 - 6/17	1,867	1.9	1.9	4.4	9.4	5.7	3.2	4.0	3.3	4.2	6.1
SFY 2018	7/17 - 6/18	2,313	1.7	2.1	2.2	5.2	3.5	2.9	2.8	2.4	4.4	3.5
SFY 2019	7/18 - 6/19	2,694	2.3	2.2	2.2	6.5	3.4	4.0	3.7	3.5	4.0	
SFY 2020	7/19 - 6/20	3,204	1.8	2.2	1.9	3.7	3.0					
SFYs 2015-2020	7/14 - 6/20	12,324	2.2	2.6	2.7	6.4	4.3					Data not available

REGIONS	Entered WISE	N	MONTHS PRE-PERIOD				MONTHS POST PERIOD					
GREAT RIVERS	Entered WISE	N	10-12	7-9	4-6	1-3	1-3	4-6	7-9	10-12	13-15	16-18
SFY 2015	7/14 - 6/15	---2	0.0	0.0	0.0	0.0	0.0	15.2	0.0	0.0	0.0	0.0
SFY 2016	7/15 - 6/16	---2	4.4	4.3	0.0	4.1	0.0	4.2	0.0	4.3	0.0	0.0
SFY 2017	7/16 - 6/17	---2	0.0	2.8	0.0	2.6	5.1	2.6	0.0	5.3	0.0	0.0
SFY 2018	7/17 - 6/18	---2	3.6	0.0	0.0	5.0	5.0	0.0	1.7	3.5	4.5	0.0
SFY 2019	7/18 - 6/19	---2	0.0	1.5	0.0	4.3	1.4	1.4	1.5	1.5	0.0	
SFY 2020	7/19 - 6/20	---2	0.0	1.3	0.0	1.2	0.0					
SFYs 2015-2020	7/14 - 6/20	944	1.1	1.5	0.0	3.2	2.1					Data not available

GREATER COLUMBIA	Entered WISE	N	MONTHS PRE-PERIOD				MONTHS POST PERIOD					
GREATER COLUMBIA	Entered WISE	N	10-12	7-9	4-6	1-3	1-3	4-6	7-9	10-12	13-15	16-18
SFY 2015	7/14 - 6/15	---2	1.9	3.7	3.6	10.5	5.3	1.8	7.2	3.7	3.7	3.7
SFY 2016	7/15 - 6/16	---2	2.5	4.9	4.8	5.8	6.9	10.5	10.6	7.2	6.7	1.2
SFY 2017	7/16 - 6/17	---2	4.4	1.1	8.5	6.1	10.2	3.1	6.2	3.2	5.3	5.4
SFY 2018	7/17 - 6/18	---2	1.0	0.0	0.0	3.8	5.6	2.8	5.7	2.9	1.0	3.0
SFY 2019	7/18 - 6/19	---2	5.2	1.7	3.4	10.6	2.5	5.8	0.8	5.1	6.0	
SFY 2020	7/19 - 6/20	---2	0.0	2.5	1.6	6.3	8.7					
SFYs 2015-2020	7/14 - 6/20	1,996	2.5	2.1	3.5	7.0	6.5					Data not available

KING COUNTY	Entered WISE	N	MONTHS PRE-PERIOD				MONTHS POST PERIOD					
KING COUNTY	Entered WISE	N	10-12	7-9	4-6	1-3	1-3	4-6	7-9	10-12	13-15	16-18
SFY 2015	7/14 - 6/15	0										
SFY 2016	7/15 - 6/16	---2	1.6	3.2	1.6	3.1	9.4	1.6	3.2	11.3	5.0	3.4
SFY 2017	7/16 - 6/17	---2	1.8	1.7	0.0	6.5	3.3	3.3	0.0	0.0	3.4	1.8
SFY 2018	7/17 - 6/18	---2	1.8	0.0	5.3	5.2	6.9	6.9	0.0	0.0	3.6	3.7
SFY 2019	7/18 - 6/19	---2	2.0	1.9	1.9	1.9	1.9	3.7	4.7	2.9	8.6	
SFY 2020	7/19 - 6/20	---2	0.7	0.7	5.2	2.6	1.3					
SFYs 2015-2020	7/14 - 6/20	1,496	1.4	1.4	3.2	3.4	3.6					Data not available

WISe Outcomes

JUNE 2021

Emergency Department Visits with Substance Use Disorder Diagnosis

NORTH CENTRAL															
SFY 2015	7/14 - 6/15	0													
SFY 2016	7/15 - 6/16	--- ²	0.0	0.0	0.0	0.0	0.0	0.0	0.0	0.0	0.0	0.0	0.0	0.0	0.0
SFY 2017	7/16 - 6/17	--- ²	0.0	0.0	0.0	0.0	27.8	6.9	7.1	7.1	14.5	7.4			
SFY 2018	7/17 - 6/18	--- ²	0.0	2.6	2.6	12.3	2.5	0.0	7.5	0.0	5.2	2.6			
SFY 2019	7/18- 6/19	--- ²	0.0	4.8	0.0	6.9	2.3	0.0	9.4	2.4	0.0				
SFY 2020	7/19- 6/20	--- ²	6.2	6.2	0.0	3.0	2.9								
SFYs 2015-2020	7/14 - 6/20	--- ²	1.5	3.8	0.7	6.5	5.1								<i>Data not available</i>
NORTH SOUND															
SFY 2015	7/14 - 6/15	--- ²	2.2	10.6	6.1	16.1	8.1	10.2	2.1	0.0	4.3	2.2			
SFY 2016	7/15 - 6/16	--- ²	3.5	0.0	1.7	1.7	1.7	5.0	1.7	3.5	1.8	9.0			
SFY 2017	7/16 - 6/17	--- ²	0.0	1.5	7.3	15.7	5.7	2.9	10.0	7.3	3.0	9.2			
SFY 2018	7/17 - 6/18	--- ²	0.0	9.6	8.6	4.3	1.4	1.4	2.9	5.8	2.9	3.7			
SFY 2019	7/18- 6/19	--- ²	0.9	0.9	1.8	2.6	2.6	2.6	2.6	0.9	0.9				
SFY 2020	7/19- 6/20	--- ²	5.7	4.9	0.0	3.0	0.0								
SFYs 2015-2020	7/14 - 6/20	1,669	2.4	4.1	3.5	6.0	2.6								<i>Data not available</i>
PIERCE															
SFY 2015	7/14 - 6/15	--- ²	2.6	7.7	0.0	14.2	4.7	9.5	7.1	19.3	7.3	0.0			
SFY 2016	7/15 - 6/16	--- ²	2.0	1.9	1.9	18.0	10.8	7.2	14.8	13.3	3.8	9.7			
SFY 2017	7/16 - 6/17	--- ²	1.3	5.3	6.5	12.7	6.3	7.7	3.9	2.6	6.7	12.2			
SFY 2018	7/17 - 6/18	--- ²	1.1	4.4	2.1	8.4	4.2	3.2	0.0	1.1	16.2	3.4			
SFY 2019	7/18- 6/19	--- ²	1.3	3.7	3.6	12.9	3.5	3.6	8.5	3.7	2.5				
SFY 2020	7/19- 6/20	--- ²	3.0	2.9	1.9	4.6	2.7								
SFYs 2015-2020	7/14 - 6/20	1,565	1.8	4.1	2.9	10.7	4.9								<i>Data not available</i>
SALISH															
SFY 2015	7/14 - 6/15	0													
SFY 2016	7/15 - 6/16	--- ²	0.0	18.5	0.0	0.0	0.0	18.5	0.0	0.0	0.0	18.5			
SFY 2017	7/16 - 6/17	--- ²	0.0	0.0	0.0	21.7	7.2	0.0	7.4	0.0	0.0	0.0			
SFY 2018	7/17 - 6/18	--- ²	2.5	2.4	0.0	4.8	0.0	2.4	2.5	5.0	5.0	2.5			
SFY 2019	7/18- 6/19	--- ²	0.0	0.0	3.6	9.0	7.1	7.1	5.4	5.6	5.6				
SFY 2020	7/19- 6/20	--- ²	5.1	0.0	0.0	6.3	3.1								
SFYs 2015-2020	7/14 - 6/20	--- ²	2.3	1.2	1.1	7.8	3.9								<i>Data not available</i>
SOUTHWEST															
SFY 2015	7/14 - 6/15	--- ²	8.5	8.4	5.4	15.6	7.8	2.6	5.2	2.7	0.0	0.0			
SFY 2016	7/15 - 6/16	--- ²	4.4	2.8	0.0	17.0	4.9	7.3	5.1	5.1	0.0	2.6			
SFY 2017	7/16 - 6/17	--- ²	2.6	0.0	0.0	11.7	0.0	2.3	2.4	2.4	4.9	5.1			
SFY 2018	7/17 - 6/18	--- ²	2.6	0.0	4.9	6.8	4.5	2.3	4.7	2.4	0.0	4.9			
SFY 2019	7/18- 6/19	--- ²	0.0	0.0	3.8	5.6	1.9	0.0	0.0	0.0	0.0				
SFY 2020	7/19- 6/20	--- ²	0.0	1.8	3.5	6.9	3.5								
SFYs 2015-2020	7/14 - 6/20	--- ²	2.6	1.9	3.0	10.1	3.6								<i>Data not available</i>

WISe Outcomes

JUNE 2021

Emergency Department Visits with Substance Use Disorder Diagnosis

SPOKANE												
SFY 2015	7/14 - 6/15	--- ¹	0.0	0.0	0.0	0.0	0.0	0.0	0.0	0.0	0.0	
SFY 2016	7/15 - 6/16	--- ²	35.1	0.0	0.0	0.0	8.8	96.5	46.3	101.0	44.4	
SFY 2017	7/16 - 6/17	--- ²	2.7	2.6	2.6	10.3	1.3	2.6	2.6	5.2	4.0	
SFY 2018	7/17 - 6/18	--- ²	3.7	0.9	0.9	3.4	0.9	5.1	2.6	2.7	2.7	
SFY 2019	7/18- 6/19	--- ²	6.2	5.7	0.9	8.1	7.1	6.3	4.1	7.4	7.4	
SFY 2020	7/19- 6/20	--- ²	0.0	3.0	2.0	3.9	5.8	Data not available				
SFYs 2015-2020	7/14 - 6/20	1,415	4.2	3.0	1.4	5.9	4.0					

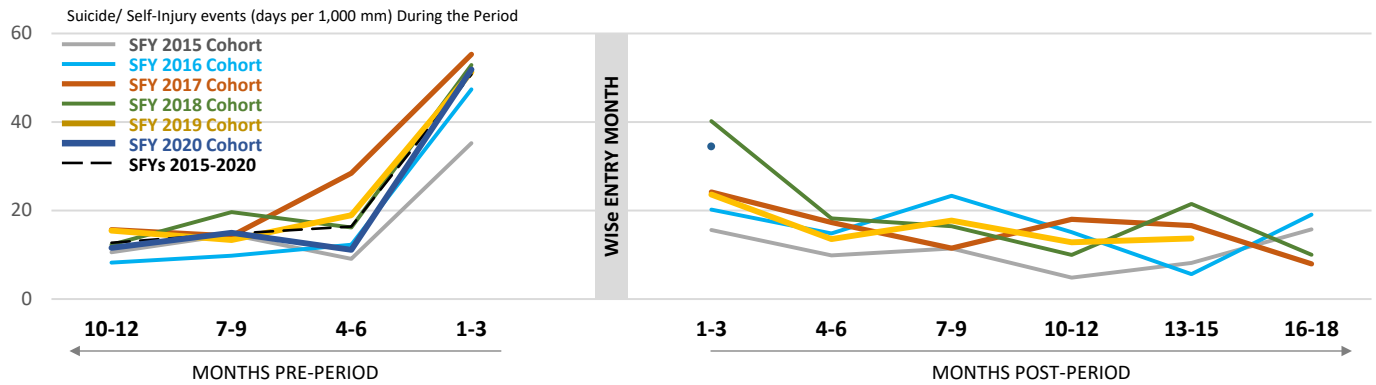
THURSTON-MASON												
SFY 2015	7/14 - 6/15	--- ²	1.6	6.3	7.8	10.5	13.3	6.0	4.6	1.5	3.1	
SFY 2016	7/15 - 6/16	--- ²	2.1	4.0	4.0	1.9	3.7	5.7	3.9	0.0	6.0	
SFY 2017	7/16 - 6/17	--- ²	1.9	0.0	6.9	6.7	5.0	0.0	1.7	0.0	1.7	
SFY 2018	7/17 - 6/18	--- ²	0.0	0.0	0.0	1.8	3.5	1.7	1.8	0.0	0.0	
SFY 2019	7/18- 6/19	--- ²	2.8	0.0	2.6	0.0	2.6	7.8	2.6	2.7	2.8	
SFY 2020	7/19- 6/20	--- ²	0.0	0.0	2.2	0.0	2.2	Data not available				
SFYs 2015-2020	7/14 - 6/20	1,240	1.2	1.7	3.9	3.5	5.1					

Notes. ¹Primary suppression: To protect the privacy of individuals, cells in this data product that represent 10 or fewer persons are not displayed. ²Secondary suppression: Region-level numbers of youth in individual years are also suppressed because most could be used to recalculate suppressed values. Aggregate years are shown where possible at the region level.

WISe Outcomes

JUNE 2021

Suicide/Self-Injury Diagnoses



Cohort	Entered WISe	N	MONTHS PRE-PERIOD				MONTHS POST PERIOD					
			10-12	7-9	4-6	1-3	1-3	4-6	7-9	10-12	13-15	16-18
WASHINGTON			Suicide / Self-injury Events (days per 1,000 mm) During the Period									
SFY 2015	7/14 - 6/15	881	10.6	14.6	9.1	35.2	15.6	9.8	11.5	4.8	8.2	15.8
SFY 2016	7/15 - 6/16	1,365	8.2	9.8	12.3	47.4	20.2	14.8	23.3	15.1	5.6	19.1
SFY 2017	7/16 - 6/17	1,867	15.7	14.2	28.4	55.3	24.2	17.3	11.5	18.0	16.6	7.9
SFY 2018	7/17 - 6/18	2,313	12.3	19.6	16.2	52.9	40.2	18.2	16.4	10.0	21.5	10.0
SFY 2019	7/18 - 6/19	2,694	15.5	13.3	18.9	51.3	23.6	13.5	17.7	12.8	13.7	
SFY 2020	7/19 - 6/20	3,204	11.5	15.0	11.1	51.9	34.4					
SFYs 2015-2020	7/14 - 6/20	12,324	12.7	14.8	16.4	50.8	28.7					Data not available

REGIONS	Entered WISe	N	MONTHS PRE-PERIOD				MONTHS POST PERIOD					
GREAT RIVERS			10-12	7-9	4-6	1-3	1-3	4-6	7-9	10-12	13-15	16-18
SFY 2015	7/14 - 6/15	---2	0.0	0.0	0.0	0.0	37.2	38.9	0.0	0.0	45.5	15.2
SFY 2016	7/15 - 6/16	---2	11.3	0.0	4.2	16.5	0.0	12.7	8.4	4.3	4.4	17.5
SFY 2017	7/16 - 6/17	---2	34.8	11.4	32.5	63.0	20.5	38.5	20.8	39.7	38.8	7.9
SFY 2018	7/17 - 6/18	---2	0.0	1.8	1.7	29.9	82.9	13.5	3.5	5.3	12.5	3.7
SFY 2019	7/18 - 6/19	---2	10.6	4.5	7.4	33.2	11.4	4.3	5.8	2.9	21.1	
SFY 2020	7/19 - 6/20	---2	6.6	18.0	8.9	25.6	6.1					
SFYs 2015-2020	7/14 - 6/20	944	10.2	8.2	9.6	32.1	26.1					Data not available

GREATER COLUMBIA	Entered WISe	N	MONTHS PRE-PERIOD				MONTHS POST PERIOD					
			10-12	7-9	4-6	1-3	1-3	4-6	7-9	10-12	13-15	16-18
SFY 2015	7/14 - 6/15	---2	0.0	9.5	4.6	18.0	18.0	0.0	4.6	9.4	11.2	9.3
SFY 2016	7/15 - 6/16	---2	6.5	7.5	17.2	49.8	16.0	20.9	2.4	9.6	3.7	51.5
SFY 2017	7/16 - 6/17	---2	10.0	4.4	38.2	20.4	11.2	4.6	2.1	11.7	5.3	10.2
SFY 2018	7/17 - 6/18	---2	4.0	7.9	10.7	19.7	23.3	6.6	2.9	6.8	0.0	4.9
SFY 2019	7/18 - 6/19	---2	17.3	13.7	21.6	35.9	9.8	21.5	11.7	8.5	2.6	
SFY 2020	7/19 - 6/20	---2	5.1	24.8	9.8	41.3	14.3					
SFYs 2015-2020	7/14 - 6/20	1,996	7.9	12.2	17.6	31.9	15.1					Data not available

KING COUNTY	Entered WISe	N	MONTHS PRE-PERIOD				MONTHS POST PERIOD					
			10-12	7-9	4-6	1-3	1-3	4-6	7-9	10-12	13-15	16-18
SFY 2015	7/14 - 6/15	0										
SFY 2016	7/15 - 6/16	---2	8.3	8.2	10.2	15.6	9.4	12.6	81.0	38.6	5.0	15.2
SFY 2017	7/16 - 6/17	---2	8.8	6.9	8.5	35.9	24.5	4.9	3.3	6.6	30.6	1.8
SFY 2018	7/17 - 6/18	---2	11.0	10.6	45.6	34.4	22.3	29.4	5.3	9.1	29.0	7.4
SFY 2019	7/18 - 6/19	---2	9.8	20.0	26.3	34.5	22.4	9.4	22.1	31.6	25.0	
SFY 2020	7/19 - 6/20	---2	2.7	4.7	11.2	22.2	9.0					
SFYs 2015-2020	7/14 - 6/20	1,496	7.1	10.0	18.8	27.7	16.2					Data not available

WISe Outcomes

JUNE 2021

Suicide/Self-Injury Diagnoses

NORTH CENTRAL															
SFY 2015	7/14 - 6/15	0													
SFY 2016	7/15 - 6/16	--- ²	0.0	0.0	0.0	50.0	0.0	0.0	0.0	0.0	0.0	0.0	0.0	0.0	33.3
SFY 2017	7/16 - 6/17	--- ²	6.9	20.8	0.0	41.7	13.9	6.9	14.2	7.1	7.2	0.0			
SFY 2018	7/17 - 6/18	--- ²	10.3	5.2	17.9	9.9	14.9	10.0	12.5	17.9	28.6	13.0			
SFY 2019	7/18- 6/19	--- ²	9.9	4.8	4.6	37.0	25.3	57.9	7.0	7.1	0.0				
SFY 2020	7/19- 6/20	--- ²	9.3	12.3	3.0	41.7	61.4								
SFYs 2015-2020	7/14 - 6/20	--- ²	9.1	8.3	7.4	31.2	28.9								
							<i>Data not available</i>								
NORTH SOUND															
SFY 2015	7/14 - 6/15	--- ²	0.0	0.0	10.5	20.6	0.0	5.3	25.6	0.0	9.8	26.1			
SFY 2016	7/15 - 6/16	--- ²	4.6	9.0	25.1	56.7	43.3	28.3	33.3	25.9	12.3	5.4			
SFY 2017	7/16 - 6/17	--- ²	19.8	26.9	19.7	50.1	37.0	28.6	7.2	4.4	7.6	9.2			
SFY 2018	7/17 - 6/18	--- ²	37.9	17.7	23.0	48.2	19.8	18.4	8.6	14.4	23.6	16.4			
SFY 2019	7/18- 6/19	--- ²	16.6	13.4	32.9	42.6	18.9	14.0	19.2	8.0	6.2				
SFY 2020	7/19- 6/20	--- ²	22.9	20.4	16.5	43.7	15.1								
SFYs 2015-2020	7/14 - 6/20	1,669	18.7	15.9	22.1	44.3	21.6								
							<i>Data not available</i>								
PIERCE															
SFY 2015	7/14 - 6/15	--- ²	0.0	6.6	6.5	127.5	6.0	12.1	17.9	0.0	2.4	7.5			
SFY 2016	7/15 - 6/16	--- ²	0.0	25.1	7.4	58.1	10.8	18.1	0.0	1.9	6.7	0.0			
SFY 2017	7/16 - 6/17	--- ²	9.3	5.3	18.3	45.6	16.3	7.0	15.5	30.4	21.6	6.8			
SFY 2018	7/17 - 6/18	--- ²	19.9	18.7	15.5	77.0	26.4	5.3	4.4	3.3	17.9	1.1			
SFY 2019	7/18- 6/19	--- ²	3.8	11.2	6.1	61.6	14.1	6.0	6.1	3.7	13.6				
SFY 2020	7/19- 6/20	--- ²	17.8	2.9	5.8	32.4	47.0								
SFYs 2015-2020	7/14 - 6/20	1,565	10.6	11.1	10.3	60.7	23.6								
							<i>Data not available</i>								
SALISH															
SFY 2015	7/14 - 6/15	0													
SFY 2016	7/15 - 6/16	--- ²	0.0	0.0	0.0	27.8	0.0	18.5	18.5	0.0	0.0	0.0			
SFY 2017	7/16 - 6/17	--- ²	29.6	29.6	59.3	36.2	43.5	51.9	44.4	16.3	17.1	9.0			
SFY 2018	7/17 - 6/18	--- ²	0.0	0.0	14.4	26.4	9.6	2.4	14.7	10.0	20.1	22.7			
SFY 2019	7/18- 6/19	--- ²	1.9	0.0	5.5	19.7	12.3	3.5	12.5	9.3	9.4				
SFY 2020	7/19- 6/20	--- ²	1.7	0.0	1.7	44.2	26.6								
SFYs 2015-2020	7/14 - 6/20	--- ²	3.5	2.3	10.2	31.4	18.7								
							<i>Data not available</i>								
SOUTHWEST															
SFY 2015	7/14 - 6/15	--- ²	43.9	28.8	7.0	0.0	13.3	6.6	5.2	0.0	13.3	16.5			
SFY 2016	7/15 - 6/16	--- ²	0.0	12.6	2.7	99.8	49.9	4.9	17.8	10.3	5.2	23.4			
SFY 2017	7/16 - 6/17	--- ²	2.6	22.6	14.3	81.6	30.1	30.1	26.0	2.4	7.4	15.2			
SFY 2018	7/17 - 6/18	--- ²	0.0	5.1	4.9	76.5	24.9	40.8	30.3	26.4	50.7	14.7			
SFY 2019	7/18- 6/19	--- ²	2.0	0.0	13.4	31.5	51.9	3.7	7.5	1.9	6.9				
SFY 2020	7/19- 6/20	--- ²	13.3	3.6	10.6	44.9	38.0								
SFYs 2015-2020	7/14 - 6/20	--- ²	9.9	10.8	9.3	54.8	35.7								
							<i>Data not available</i>								

WISe Outcomes

JUNE 2021

Suicide/Self-Injury Diagnoses

SPOKANE												
SFY 2015	7/14 - 6/15	---	0.0	0.0	0.0	0.0	0.0	0.0	0.0	0.0	0.0	
SFY 2016	7/15 - 6/16	---	112.6	0.0	0.0	31.3	78.9	8.8	64.8	50.5	11.1	0.0
SFY 2017	7/16 - 6/17	---	24.6	27.8	60.7	148.7	38.5	22.0	19.5	47.2	28.0	9.3
SFY 2018	7/17 - 6/18	---	14.7	61.7	16.6	116.9	108.5	43.7	55.4	11.6	38.4	18.7
SFY 2019	7/18- 6/19	---	44.4	31.7	28.3	133.0	49.2	11.6	46.1	29.5	27.9	
SFY 2020	7/19- 6/20	---	26.4	37.0	21.7	169.1	143.0					
SFYs 2015-2020	7/14 - 6/20	1,415	30.0	39.5	28.6	137.1	87.2	<i>Data not available</i>				

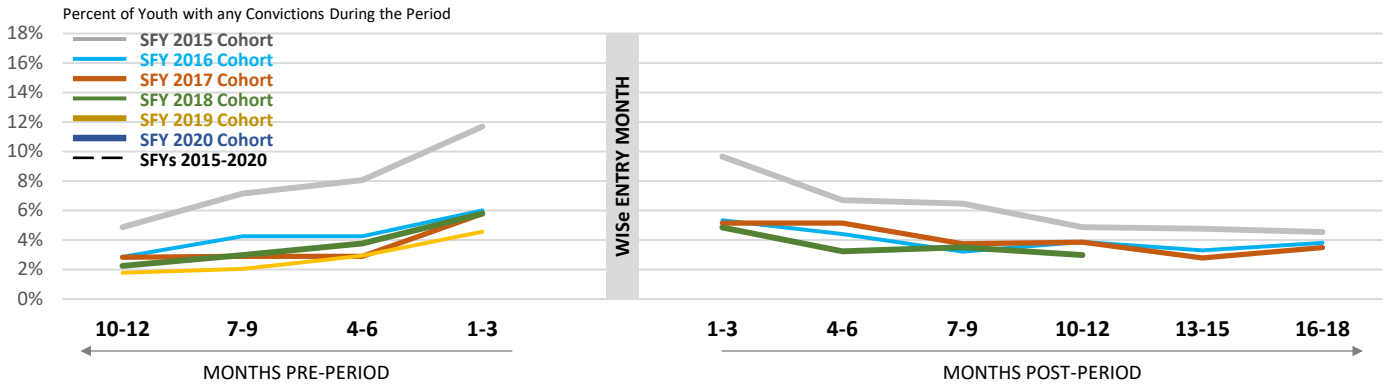
THURSTON-MASON												
SFY 2015	7/14 - 6/15	---	16.4	28.5	15.9	26.9	30.3	19.3	7.8	10.9	1.5	18.9
SFY 2016	7/15 - 6/16	---	5.3	7.2	13.0	38.8	1.9	0.0	5.8	1.9	2.0	7.0
SFY 2017	7/16 - 6/17	---	19.8	7.1	20.8	13.3	18.2	16.7	0.0	1.7	3.5	5.3
SFY 2018	7/17 - 6/18	---	11.6	22.5	11.1	23.0	5.2	1.7	9.0	5.5	5.7	1.9
SFY 2019	7/18- 6/19	---	16.5	8.3	13.2	36.5	28.4	15.6	17.1	5.4	16.7	
SFY 2020	7/19- 6/20	---	5.8	15.9	11.0	56.1	14.0					
SFYs 2015-2020	7/14 - 6/20	1,240	11.9	15.7	14.0	34.2	16.1	<i>Data not available</i>				

Notes. ¹Primary suppression: To protect the privacy of individuals, cells in this data product that represent 10 or fewer persons are not displayed. ²Secondary suppression: Region-level numbers of youth in individual years are also suppressed because most could be used to recalculate suppressed values. Aggregate years are shown where possible at the region level.

WISe Outcomes

JUNE 2021

Juvenile Justice Convictions



Cohort	Entered WISe	N	MONTHS PRE-PERIOD				MONTHS POST PERIOD					
			10-12	7-9	4-6	1-3	1-3	4-6	7-9	10-12	13-15	16-18
WASHINGTON												
Percent of Youth with any Convictions During the Period												
SFY 2015	7/14 - 6/15	881	4.9%	7.2%	8.1%	11.7%	9.6%	6.7%	6.5%	4.9%	4.8%	4.5%
SFY 2016	7/15 - 6/16	1,365	2.9%	4.2%	4.2%	6.0%	5.3%	4.4%	3.2%	3.9%	3.3%	3.8%
SFY 2017	7/16 - 6/17	1,867	2.8%	2.9%	2.9%	5.8%	5.1%	5.1%	3.7%	3.9%	2.8%	3.5%
SFY 2018	7/17 - 6/18	2,313	2.2%	3.0%	3.8%	5.8%	4.8%	3.2%	3.5%	3.0%		
SFY 2019	7/18 - 6/19	2,694	1.8%	2.0%	2.9%	4.6%						
SFY 2020	7/19 - 6/20	3,204										
SFYs 2015-2020	7/14 - 6/20	12,324					Data not available					

REGIONS		Entered WISe	MONTHS PRE-PERIOD				MONTHS POST PERIOD						
GREAT RIVERS			10-12	7-9	4-6	1-3	1-3	4-6	7-9	10-12	13-15	16-18	
SFY 2015	7/14 - 6/15	---2	0.0%	8.7%	4.3%	17.4%	13.0%	4.3%	13.0%	8.7%	8.7%	4.3%	
SFY 2016	7/15 - 6/16	---2	2.5%	2.5%	1.2%	6.2%	3.7%	4.9%	0.0%	1.2%	3.7%	2.5%	
SFY 2017	7/16 - 6/17	---2	2.3%	3.1%	3.1%	7.6%	7.6%	6.1%	4.6%	6.9%	2.3%	3.8%	
SFY 2018	7/17 - 6/18	---2	4.0%	3.5%	6.5%	7.0%	7.0%	2.5%	4.0%	2.5%	3.5%	4.0%	
SFY 2019	7/18 - 6/19	---2	2.1%	2.6%	6.4%	5.1%	3.0%	5.1%	3.4%	4.3%	3.4%		
SFY 2020	7/19 - 6/20	---2	0.7%	3.3%	1.5%	1.8%	2.9%						
SFYs 2015-2020	7/14 - 6/20	944	2.1%	3.2%	4.0%	5.3%	4.8%	Data not available					

GREATER COLUMBIA		Entered WISe	MONTHS PRE-PERIOD				MONTHS POST PERIOD						
			10-12	7-9	4-6	1-3	1-3	4-6	7-9	10-12	13-15	16-18	
SFY 2015	7/14 - 6/15	---2	5.3%	5.3%	10.0%	8.9%	7.4%	7.9%	7.4%	6.3%	4.2%	6.3%	
SFY 2016	7/15 - 6/16	---2	4.5%	5.8%	7.5%	9.2%	6.2%	3.8%	4.8%	6.8%	4.8%	6.2%	
SFY 2017	7/16 - 6/17	---2	5.5%	5.8%	5.8%	7.6%	5.5%	8.0%	5.5%	6.1%	4.3%	5.2%	
SFY 2018	7/17 - 6/18	---2	3.9%	5.6%	4.5%	7.3%	6.2%	4.8%	5.3%	3.1%	4.5%	5.3%	
SFY 2019	7/18 - 6/19	---2	3.9%	3.7%	6.9%	7.1%	5.9%	5.6%	4.2%	3.4%	3.2%		
SFY 2020	7/19 - 6/20	---2	3.3%	4.7%	5.7%	5.2%	5.0%						
SFYs 2015-2020	7/14 - 6/20	1,996	4.3%	5.1%	6.4%	7.3%	5.9%	Data not available					

KING COUNTY		Entered WISe	MONTHS PRE-PERIOD				MONTHS POST PERIOD					
			10-12	7-9	4-6	1-3	1-3	4-6	7-9	10-12	13-15	16-18
SFY 2015	7/14 - 6/15	0										
SFY 2016	7/15 - 6/16	---2	0.9%	1.4%	1.9%	0.9%	1.4%	1.4%	1.4%	1.9%	3.3%	1.4%
SFY 2017	7/16 - 6/17	---2	0.5%	0.5%	0.5%	2.9%	2.0%	0.5%	0.5%	1.0%	1.5%	2.0%
SFY 2018	7/17 - 6/18	---2	0.5%	1.5%	3.1%	3.1%	2.1%	1.5%	0.5%	1.0%		
SFY 2019	7/18 - 6/19	---2	0.8%	1.1%	0.8%	1.4%						
SFY 2020	7/19 - 6/20	---2										
SFYs 2015-2020	7/14 - 6/20	1,496					Data not available					

WISe Outcomes

JUNE 2021

Juvenile Justice Convictions

NORTH CENTRAL															
SFY 2015	7/14 - 6/15	0													
SFY 2016	7/15 - 6/16	--- ²	5.0%	5.0%	0.0%	5.0%	10.0%	15.0%	0.0%	0.0%	0.0%	0.0%	0.0%	0.0%	0.0%
SFY 2017	7/16 - 6/17	--- ²	0.0%	2.1%	8.3%	6.3%	6.3%	6.3%	6.3%	4.2%	2.1%	4.2%	4.2%	4.2%	4.2%
SFY 2018	7/17 - 6/18	--- ²	2.2%	1.5%	3.0%	6.7%	5.2%	1.5%	6.7%	3.0%	4.4%	4.4%	4.4%	4.4%	4.4%
SFY 2019	7/18 - 6/19	--- ²	0.0%	1.4%	0.0%	5.5%	4.1%	2.1%	2.1%	4.1%	2.8%				
SFY 2020	7/19 - 6/20	--- ²	0.9%	1.8%	1.8%	6.1%	4.4%								
SFYs 2015-2020	7/14 - 6/20	--- ²	1.1%	1.7%	2.2%	6.1%	5.0%								
							<i>Data not available</i>								
NORTH SOUND															
SFY 2015	7/14 - 6/15	--- ²	4.2%	7.8%	9.0%	10.2%	8.4%	5.4%	4.8%	3.0%	4.8%	2.4%	2.4%	2.4%	2.4%
SFY 2016	7/15 - 6/16	--- ²	2.5%	7.0%	4.5%	5.0%	5.0%	5.5%	3.0%	3.0%	1.5%	2.5%	2.5%	2.5%	2.5%
SFY 2017	7/16 - 6/17	--- ²	2.1%	2.1%	2.1%	5.1%	4.3%	5.1%	2.6%	3.8%	2.1%	3.8%	3.8%	3.8%	3.8%
SFY 2018	7/17 - 6/18	--- ²	2.5%	0.4%	2.5%	4.2%	3.0%	3.8%	2.5%	2.5%	2.5%	1.7%	1.7%	1.7%	1.7%
SFY 2019	7/18 - 6/19	--- ²	0.5%	2.1%	0.8%	3.1%	1.8%	1.8%	2.1%	1.3%	1.8%				
SFY 2020	7/19 - 6/20	--- ²	1.6%	2.5%	2.0%	2.3%	2.7%								
SFYs 2015-2020	7/14 - 6/20	1,669	1.9%	3.1%	2.8%	4.3%	3.6%								
							<i>Data not available</i>								
PIERCE															
SFY 2015	7/14 - 6/15	--- ²	4.2%	7.7%	6.3%	12.0%	9.9%	7.0%	9.2%	4.9%	4.9%	4.9%	4.9%	4.9%	4.9%
SFY 2016	7/15 - 6/16	--- ²	4.9%	4.9%	2.7%	7.0%	8.1%	5.9%	5.4%	4.9%	3.2%	3.2%	3.2%	3.2%	3.2%
SFY 2017	7/16 - 6/17	--- ²	4.9%	4.1%	1.5%	7.9%	9.4%	6.7%	4.1%	3.4%	2.2%	3.4%	3.4%	3.4%	3.4%
SFY 2018	7/17 - 6/18	--- ²	1.9%	3.5%	3.8%	5.3%	2.5%	3.8%	4.4%	1.9%	3.5%	2.5%	2.5%	2.5%	2.5%
SFY 2019	7/18 - 6/19	--- ²	1.1%	1.4%	1.8%	5.6%	4.9%	3.5%	0.0%	2.5%	1.8%				
SFY 2020	7/19 - 6/20	--- ²	2.2%	1.4%	1.4%	1.9%	2.4%								
SFYs 2015-2020	7/14 - 6/20	1,565	2.9%	3.3%	2.6%	5.8%	5.4%								
							<i>Data not available</i>								
SALISH															
SFY 2015	7/14 - 6/15	0													
SFY 2016	7/15 - 6/16	--- ²	0.0%	0.0%	0.0%	0.0%	0.0%	0.0%	0.0%	0.0%	5.6%	0.0%	0.0%	0.0%	0.0%
SFY 2017	7/16 - 6/17	--- ²	0.0%	4.3%	4.3%	2.2%	4.3%	4.3%	2.2%	2.2%	6.5%	2.2%	2.2%	2.2%	2.2%
SFY 2018	7/17 - 6/18	--- ²	4.3%	2.1%	3.6%	5.0%	2.9%	5.7%	3.6%	6.4%	1.4%	1.4%	1.4%	1.4%	1.4%
SFY 2019	7/18 - 6/19	--- ²	1.6%	1.1%	2.1%	4.7%	2.1%	2.1%	2.6%	1.6%	1.1%				
SFY 2020	7/19 - 6/20	--- ²	0.0%	0.9%	1.9%	2.3%	1.4%								
SFYs 2015-2020	7/14 - 6/20	--- ²	1.5%	1.5%	2.5%	3.6%	2.1%								
							<i>Data not available</i>								
SOUTHWEST															
SFY 2015	7/14 - 6/15	--- ²	7.0%	2.3%	4.7%	10.1%	10.9%	8.5%	9.3%	5.4%	3.9%	6.2%	6.2%	6.2%	6.2%
SFY 2016	7/15 - 6/16	--- ²	2.9%	2.9%	5.8%	10.2%	7.3%	5.1%	2.2%	4.4%	2.9%	2.2%	2.2%	2.2%	2.2%
SFY 2017	7/16 - 6/17	--- ²	0.7%	0.0%	3.5%	4.9%	6.3%	7.6%	4.2%	3.5%	4.9%	4.2%	4.2%	4.2%	4.2%
SFY 2018	7/17 - 6/18	--- ²	0.7%	1.4%	2.0%	3.4%	8.8%	3.4%	2.7%	2.7%	1.4%	3.4%	3.4%	3.4%	3.4%
SFY 2019	7/18 - 6/19	--- ²	0.6%	0.0%	2.2%	6.1%	3.3%	3.9%	2.8%	1.7%	1.1%				
SFY 2020	7/19 - 6/20	--- ²	2.6%	1.6%	0.5%	2.1%	3.1%								
SFYs 2015-2020	7/14 - 6/20	--- ²	2.3%	1.3%	2.9%	5.8%	6.2%								
							<i>Data not available</i>								

WISe Outcomes

JUNE 2021

Juvenile Justice Convictions

SPOKANE												
SFY 2015	7/14 - 6/15	--- ¹	0.0%	0.0%	0.0%	0.0%	0.0%	0.0%	0.0%	20.0%	0.0%	0.0%
SFY 2016	7/15 - 6/16	--- ²	0.0%	2.6%	0.0%	5.3%	5.3%	5.3%	7.9%	2.6%	7.9%	13.2%
SFY 2017	7/16 - 6/17	--- ²	1.9%	3.1%	2.3%	5.4%	2.3%	3.1%	3.4%	3.1%	1.9%	2.7%
SFY 2018	7/17 - 6/18	--- ²	0.8%	2.6%	3.8%	4.6%	5.9%	2.6%	2.8%	4.1%	4.6%	4.8%
SFY 2019	7/18 - 6/19	--- ²	2.9%	2.1%	2.1%	4.0%	3.7%	4.0%	3.2%	3.2%	0.5%	
SFY 2020	7/19 - 6/20	--- ²	1.2%	1.7%	2.0%	4.1%	2.0%	Data not available				
SFYs 2015-2020	7/14 - 6/20	1,415	1.6%	2.3%	2.5%	4.5%	3.7%	Data not available				

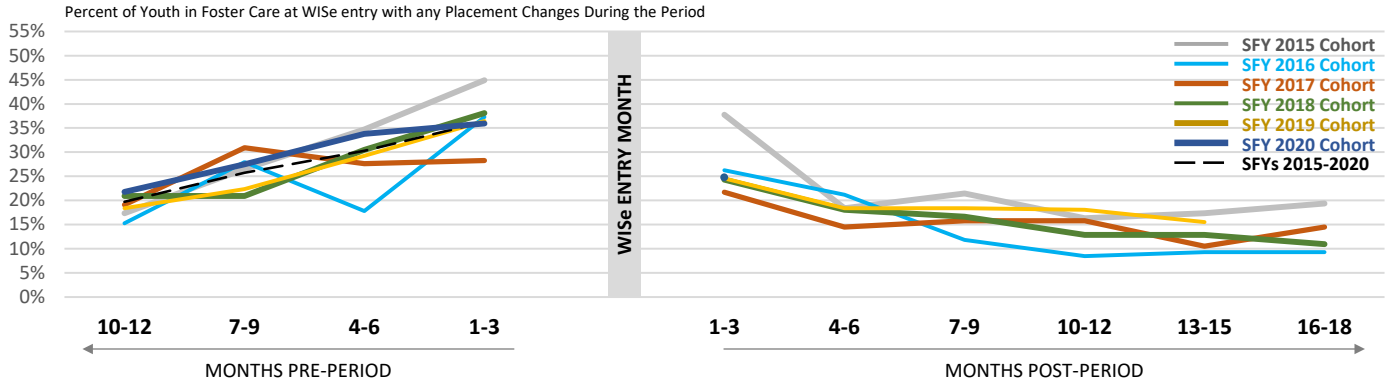
THURSTON-MASON												
SFY 2015	7/14 - 6/15	--- ²	4.9%	10.6%	9.3%	15.5%	11.5%	5.8%	3.1%	4.0%	5.3%	3.5%
SFY 2016	7/15 - 6/16	--- ²	1.7%	3.9%	5.0%	4.5%	5.6%	4.5%	2.8%	3.4%	2.2%	5.6%
SFY 2017	7/16 - 6/17	--- ²	3.4%	1.5%	2.0%	4.4%	4.4%	3.4%	4.4%	3.4%	2.5%	2.5%
SFY 2018	7/17 - 6/18	--- ²	2.1%	5.2%	3.6%	11.5%	5.2%	2.1%	2.1%	3.1%	4.2%	3.1%
SFY 2019	7/18 - 6/19	--- ²	3.1%	4.6%	6.9%	4.6%	3.8%	3.1%	8.5%	3.8%	4.6%	
SFY 2020	7/19 - 6/20	--- ²	2.3%	1.0%	3.9%	4.8%	1.9%	Data not available				
SFYs 2015-2020	7/14 - 6/20	1,240	2.9%	4.3%	5.0%	7.7%	5.3%	Data not available				

Notes. Because complete data on juvenile convictions is not available in King County starting in mid-2019, more periods are shown as "data not available" in King County and Statewide compared to other regions. ¹Primary suppression: To protect the privacy of individuals, cells in this data product that represent 10 or fewer persons are not displayed. ²Secondary suppression: Region-level numbers of youth in individual years are also suppressed because most could be used to recalculate suppressed values. Aggregate years are shown where possible at the region level.

WISe Outcomes

JUNE 2021

Foster Care Placement Changes



Cohort	Entered WISe	N	MONTHS PRE-PERIOD				MONTHS POST PERIOD					
			10-12	7-9	4-6	1-3	1-3	4-6	7-9	10-12	13-15	16-18
Percent of Youth in Foster Care at WISe entry with any Placement Changes During the Period												
SFY 2015	7/14 - 6/15	98	17.3%	26.5%	34.7%	44.9%	37.8%	18.4%	21.4%	16.3%	17.3%	19.4%
SFY 2016	7/15 - 6/16	---2	15.3%	28.0%	17.8%	37.3%	26.3%	21.2%	11.9%	8.5%	9.3%	9.3%
SFY 2017	7/16 - 6/17	152	19.1%	30.9%	27.6%	28.3%	21.7%	14.5%	15.8%	15.8%	10.5%	14.5%
SFY 2018	7/17 - 6/18	210	21.0%	21.0%	30.5%	38.1%	24.3%	18.1%	16.7%	12.9%	12.9%	11.0%
SFY 2019	7/18 - 6/19	277	18.4%	22.4%	29.2%	36.5%	24.5%	18.4%	18.4%	18.1%	15.5%	
SFY 2020	7/19 - 6/20	473	21.8%	27.5%	33.8%	35.9%	24.7%					
SFYs 2015-2020	7/14 - 6/20	1,328	19.7%	25.8%	30.3%	36.3%	25.4%					Data not available

REGIONS	Entered WISe	N	MONTHS PRE-PERIOD				MONTHS POST PERIOD					
GREAT RIVERS			10-12	7-9	4-6	1-3	1-3	4-6	7-9	10-12	13-15	16-18
SFY 2015	7/14 - 6/15	0										
SFY 2016	7/15 - 6/16	---1	20.0%	0.0%	0.0%	100.0%	80.0%	60.0%	20.0%	0.0%	20.0%	0.0%
SFY 2017	7/16 - 6/17	---2	13.3%	33.3%	40.0%	40.0%	6.7%	13.3%	13.3%	0.0%	6.7%	0.0%
SFY 2018	7/17 - 6/18	---2	30.0%	35.0%	35.0%	30.0%	30.0%	45.0%	30.0%	25.0%	35.0%	15.0%
SFY 2019	7/18 - 6/19	---2	30.0%	36.7%	30.0%	26.7%	30.0%	40.0%	23.3%	10.0%	23.3%	
SFY 2020	7/19 - 6/20	---2	18.4%	26.3%	23.7%	34.2%	18.4%					
SFYs 2015-2020	7/14 - 6/20	108	23.1%	30.6%	28.7%	35.2%	25.0%					Data not available

GREATER COLUMBIA	Entered WISe	N	MONTHS PRE-PERIOD				MONTHS POST PERIOD					
			10-12	7-9	4-6	1-3	1-3	4-6	7-9	10-12	13-15	16-18
SFY 2015	7/14 - 6/15	---2	0.0%	34.8%	39.1%	47.8%	47.8%	21.7%	30.4%	21.7%	13.0%	8.7%
SFY 2016	7/15 - 6/16	---2	15.8%	26.3%	15.8%	21.1%	26.3%	10.5%	5.3%	15.8%	5.3%	5.3%
SFY 2017	7/16 - 6/17	---2	25.0%	31.3%	18.8%	37.5%	12.5%	6.3%	12.5%	6.3%	6.3%	12.5%
SFY 2018	7/17 - 6/18	---2	17.6%	17.6%	35.3%	32.4%	23.5%	17.6%	11.8%	8.8%	2.9%	14.7%
SFY 2019	7/18 - 6/19	---2	28.0%	8.0%	36.0%	52.0%	40.0%	16.0%	36.0%	28.0%	16.0%	
SFY 2020	7/19 - 6/20	---2	22.4%	24.5%	46.9%	44.9%	32.7%					
SFYs 2015-2020	7/14 - 6/20	166	18.7%	22.9%	35.5%	40.4%	31.3%					Data not available

KING COUNTY	Entered WISe	N	MONTHS PRE-PERIOD				MONTHS POST PERIOD					
			10-12	7-9	4-6	1-3	1-3	4-6	7-9	10-12	13-15	16-18
SFY 2015	7/14 - 6/15	0										
SFY 2016	7/15 - 6/16	---2	13.3%	33.3%	6.7%	20.0%	6.7%	13.3%	13.3%	0.0%	6.7%	13.3%
SFY 2017	7/16 - 6/17	---2	10.0%	30.0%	10.0%	20.0%	30.0%	5.0%	10.0%	10.0%	10.0%	20.0%
SFY 2018	7/17 - 6/18	---2	34.6%	26.9%	11.5%	42.3%	23.1%	11.5%	15.4%	7.7%	15.4%	15.4%
SFY 2019	7/18 - 6/19	---2	18.4%	23.7%	18.4%	23.7%	31.6%	13.2%	18.4%	15.8%	18.4%	
SFY 2020	7/19 - 6/20	---2	26.3%	22.4%	26.3%	18.4%	15.8%					
SFYs 2015-2020	7/14 - 6/20	175	22.9%	25.1%	18.9%	23.4%	21.1%					Data not available

WISe Outcomes

JUNE 2021

Foster Care Placement Changes

NORTH CENTRAL															
SFY 2015	7/14 - 6/15	0													
SFY 2016	7/15 - 6/16	--- ¹	100.0%	0.0%	0.0%	0.0%	0.0%	0.0%	0.0%	0.0%	0.0%	0.0%	0.0%	0.0%	0.0%
SFY 2017	7/16 - 6/17	--- ¹	20.0%	40.0%	20.0%	20.0%	0.0%	0.0%	20.0%	0.0%	0.0%	0.0%	0.0%	0.0%	0.0%
SFY 2018	7/17 - 6/18	--- ¹	40.0%	20.0%	10.0%	50.0%	40.0%	0.0%	20.0%	10.0%	0.0%	0.0%	0.0%	10.0%	
SFY 2019	7/18 - 6/19	--- ²	24.0%	12.0%	20.0%	60.0%	12.0%	16.0%	4.0%	12.0%	12.0%				
SFY 2020	7/19 - 6/20	--- ²	21.4%	32.1%	42.9%	46.4%	25.0%	Data not available							
SFYs 2015-2020	7/14 - 6/20	69	26.1%	23.2%	27.5%	49.3%	20.3%								
NORTH SOUND															
SFY 2015	7/14 - 6/15	--- ²	6.3%	12.5%	12.5%	56.3%	50.0%	12.5%	18.8%	18.8%	6.3%	6.3%			
SFY 2016	7/15 - 6/16	--- ²	19.2%	26.9%	15.4%	34.6%	15.4%	7.7%	11.5%	7.7%	7.7%	11.5%			
SFY 2017	7/16 - 6/17	--- ²	28.6%	38.1%	47.6%	28.6%	23.8%	4.8%	23.8%	28.6%	4.8%	14.3%			
SFY 2018	7/17 - 6/18	--- ²	33.3%	16.7%	29.2%	41.7%	12.5%	16.7%	12.5%	20.8%	8.3%	4.2%			
SFY 2019	7/18 - 6/19	--- ²	14.3%	22.9%	25.7%	37.1%	20.0%	5.7%	14.3%	17.1%	14.3%				
SFY 2020	7/19 - 6/20	--- ²	14.3%	28.6%	31.7%	27.0%	19.0%	Data not available							
SFYs 2015-2020	7/14 - 6/20	185	18.4%	25.4%	28.1%	34.6%	21.1%								
PIERCE															
SFY 2015	7/14 - 6/15	--- ²	33.3%	50.0%	50.0%	58.3%	33.3%	16.7%	8.3%	0.0%	8.3%	33.3%			
SFY 2016	7/15 - 6/16	--- ²	9.5%	33.3%	33.3%	47.6%	28.6%	33.3%	23.8%	14.3%	9.5%	4.8%			
SFY 2017	7/16 - 6/17	--- ²	20.0%	33.3%	30.0%	23.3%	33.3%	30.0%	20.0%	30.0%	16.7%	23.3%			
SFY 2018	7/17 - 6/18	--- ²	20.7%	20.7%	51.7%	41.4%	20.7%	13.8%	24.1%	17.2%	3.4%	6.9%			
SFY 2019	7/18 - 6/19	--- ²	5.4%	10.8%	29.7%	45.9%	29.7%	27.0%	24.3%	32.4%	16.2%				
SFY 2020	7/19 - 6/20	--- ²	23.8%	23.8%	30.0%	37.5%	30.0%	Data not available							
SFYs 2015-2020	7/14 - 6/20	209	18.7%	24.9%	34.4%	39.7%	29.2%								
SALISH															
SFY 2015	7/14 - 6/15	0													
SFY 2016	7/15 - 6/16	0													
SFY 2017	7/16 - 6/17	--- ¹	0.0%	0.0%	0.0%	0.0%	0.0%	0.0%	0.0%	0.0%	0.0%	0.0%			
SFY 2018	7/17 - 6/18	--- ¹	16.7%	16.7%	33.3%	33.3%	16.7%	16.7%	0.0%	0.0%	16.7%	16.7%			
SFY 2019	7/18 - 6/19	--- ²	20.0%	40.0%	35.0%	40.0%	40.0%	35.0%	50.0%	25.0%	20.0%				
SFY 2020	7/19 - 6/20	--- ²	23.4%	31.9%	42.6%	44.7%	36.2%	Data not available							
SFYs 2015-2020	7/14 - 6/20	74	21.6%	32.4%	39.2%	41.9%	35.1%								
SOUTHWEST															
SFY 2015	7/14 - 6/15	--- ²	15.4%	19.2%	34.6%	26.9%	42.3%	15.4%	30.8%	15.4%	23.1%	30.8%			
SFY 2016	7/15 - 6/16	--- ²	11.1%	27.8%	16.7%	38.9%	44.4%	27.8%	0.0%	5.6%	11.1%	11.1%			
SFY 2017	7/16 - 6/17	--- ²	18.2%	18.2%	27.3%	36.4%	18.2%	18.2%	18.2%	9.1%	9.1%	18.2%			
SFY 2018	7/17 - 6/18	--- ²	0.0%	0.0%	58.3%	58.3%	33.3%	16.7%	8.3%	0.0%	16.7%	0.0%			
SFY 2019	7/18 - 6/19	--- ²	20.0%	26.7%	40.0%	20.0%	0.0%	6.7%	0.0%	0.0%	6.7%				
SFY 2020	7/19 - 6/20	--- ²	23.1%	38.5%	46.2%	61.5%	34.6%	Data not available							
SFYs 2015-2020	7/14 - 6/20	108	15.7%	24.1%	37.0%	40.7%	31.5%								

WISe Outcomes

JUNE 2021

Foster Care Placement Changes

SPOKANE															
SFY 2015	7/14 - 6/15	0													
SFY 2016	7/15 - 6/16	--- ¹	33.3%	33.3%	0.0%	33.3%	66.7%	0.0%	0.0%	0.0%	33.3%	33.3%			
SFY 2017	7/16 - 6/17	--- ²	7.1%	21.4%	21.4%	35.7%	42.9%	14.3%	7.1%	21.4%	21.4%	28.6%			
SFY 2018	7/17 - 6/18	--- ²	7.7%	23.1%	26.9%	34.6%	30.8%	11.5%	11.5%	11.5%	19.2%	15.4%			
SFY 2019	7/18 - 6/19	--- ²	17.5%	22.5%	30.0%	32.5%	20.0%	12.5%	5.0%	20.0%	12.5%				
SFY 2020	7/19 - 6/20	--- ²	28.2%	28.2%	23.1%	41.0%	25.6%								
SFYs 2015-2020	7/14 - 6/20	122	18.0%	24.6%	25.4%	36.1%	27.9%	<i>Data not available</i>							

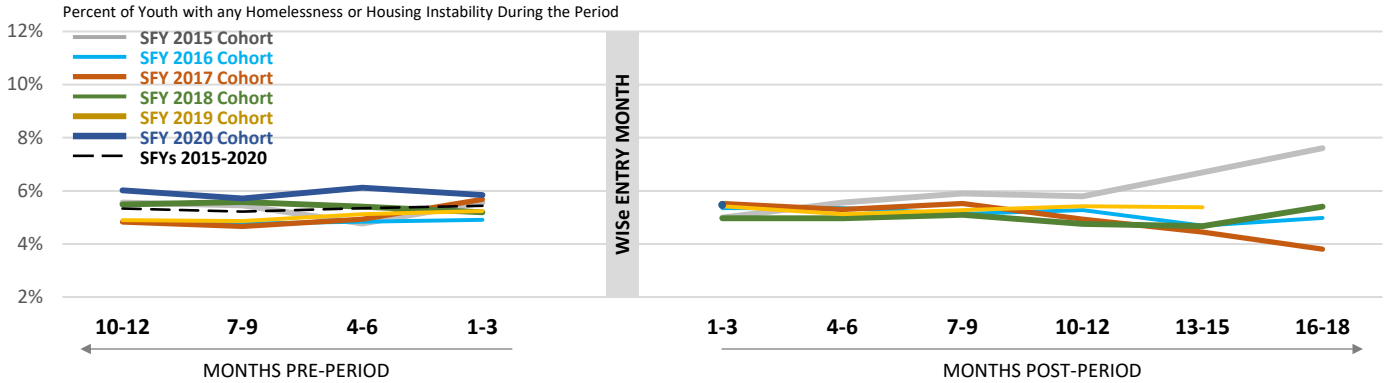
THURSTON-MASON															
SFY 2015	7/14 - 6/15	--- ²	38.1%	23.8%	38.1%	47.6%	14.3%	23.8%	9.5%	19.0%	28.6%	19.0%			
SFY 2016	7/15 - 6/16	--- ¹	10.0%	30.0%	30.0%	50.0%	10.0%	40.0%	20.0%	10.0%	10.0%	10.0%			
SFY 2017	7/16 - 6/17	--- ²	26.3%	31.6%	26.3%	21.1%	5.3%	21.1%	15.8%	10.5%	10.5%	0.0%			
SFY 2018	7/17 - 6/18	--- ²	8.7%	21.7%	13.0%	30.4%	21.7%	26.1%	21.7%	13.0%	17.4%	8.7%			
SFY 2019	7/18 - 6/19	--- ²	8.3%	33.3%	50.0%	16.7%	0.0%	8.3%	8.3%	0.0%	8.3%				
SFY 2020	7/19 - 6/20	--- ²	11.1%	33.3%	40.7%	29.6%	11.1%								
SFYs 2015-2020	7/14 - 6/20	112	17.9%	28.6%	32.1%	32.1%	11.6%	<i>Data not available</i>							

Notes. ¹Primary suppression: To protect the privacy of individuals, cells in this data product that represent 10 or fewer persons are not displayed. ²Secondary suppression: Region-level numbers of youth in individual years are also suppressed because most could be used to recalculate suppressed values. Aggregate years are shown where possible at the region level.

WISe Outcomes

JUNE 2021

Homelessness or Housing Instability



Cohort	Entered Wise	N	MONTHS PRE-PERIOD				MONTHS POST PERIOD					
			10-12	7-9	4-6	1-3	1-3	4-6	7-9	10-12	13-15	16-18
WASHINGTON												
Percent of Youth with any Homelessness or Housing Instability During the Period												
SFY 2015	7/14 - 6/15	881	5.6%	5.4%	4.8%	5.6%	5.0%	5.6%	5.9%	5.8%	6.7%	7.6%
SFY 2016	7/15 - 6/16	1,365	4.8%	4.8%	4.8%	4.9%	5.3%	5.3%	5.1%	5.3%	4.7%	5.0%
SFY 2017	7/16 - 6/17	1,867	4.8%	4.7%	4.9%	5.7%	5.5%	5.3%	5.5%	4.9%	4.4%	3.8%
SFY 2018	7/17 - 6/18	2,313	5.5%	5.6%	5.4%	5.2%	5.0%	5.0%	5.1%	4.8%	4.7%	5.4%
SFY 2019	7/18 - 6/19	2,694	4.9%	4.9%	5.1%	5.2%	5.4%	5.1%	5.3%	5.4%	5.4%	
SFY 2020	7/19 - 6/20	3,204	6.0%	5.7%	6.1%	5.8%	5.5%					
SFYs 2015-2020	7/14 - 6/20	12,324	5.3%	5.2%	5.3%	5.4%	5.3%	Data not available				

REGIONS		Entered Wise										
GREAT RIVERS												
SFY 2015	7/14 - 6/15	---	17.4%	13.0%	8.7%	8.7%	8.7%	21.7%	21.7%	17.4%	17.4%	21.7%
SFY 2016	7/15 - 6/16	---	4.9%	4.9%	3.7%	3.7%	3.7%	3.7%	1.2%	4.9%	6.2%	6.2%
SFY 2017	7/16 - 6/17	---	5.3%	4.6%	6.1%	6.1%	6.9%	6.9%	5.3%	2.3%	0.8%	0.8%
SFY 2018	7/17 - 6/18	---	8.0%	8.5%	8.5%	8.5%	8.0%	9.0%	8.0%	7.0%	9.5%	10.4%
SFY 2019	7/18 - 6/19	---	7.3%	6.8%	6.4%	6.4%	7.3%	7.7%	7.3%	7.3%	8.1%	
SFY 2020	7/19 - 6/20	---	7.7%	6.2%	4.7%	5.5%	5.5%					
SFYs 2015-2020	7/14 - 6/20	944	7.3%	6.7%	6.1%	6.4%	6.6%	Data not available				

GREATER COLUMBIA												
SFY 2015	7/14 - 6/15	---	5.8%	7.9%	6.3%	6.3%	5.8%	5.3%	6.3%	5.3%	4.7%	5.8%
SFY 2016	7/15 - 6/16	---	4.8%	4.5%	5.5%	6.8%	7.2%	6.2%	4.8%	4.5%	3.8%	4.8%
SFY 2017	7/16 - 6/17	---	4.0%	3.7%	4.9%	4.9%	4.3%	3.7%	4.0%	3.7%	2.4%	2.1%
SFY 2018	7/17 - 6/18	---	4.2%	4.2%	5.9%	5.0%	4.2%	4.2%	3.1%	3.1%	2.5%	2.8%
SFY 2019	7/18 - 6/19	---	3.9%	3.2%	3.4%	2.9%	3.7%	3.4%	4.2%	4.4%	3.7%	
SFY 2020	7/19 - 6/20	---	3.3%	3.1%	4.5%	2.6%	3.6%					
SFYs 2015-2020	7/14 - 6/20	1,996	4.2%	4.1%	4.9%	4.5%	4.6%	Data not available				

KING COUNTY												
SFY 2015	7/14 - 6/15	0										
SFY 2016	7/15 - 6/16	---	5.1%	6.0%	6.0%	6.0%	7.4%	7.4%	7.9%	7.4%	4.7%	5.1%
SFY 2017	7/16 - 6/17	---	6.3%	5.4%	6.3%	6.8%	5.4%	7.3%	6.8%	6.3%	7.3%	3.9%
SFY 2018	7/17 - 6/18	---	4.1%	4.6%	3.1%	3.1%	3.6%	4.1%	3.6%	2.6%	4.6%	6.7%
SFY 2019	7/18 - 6/19	---	6.7%	7.8%	8.3%	8.6%	7.5%	5.6%	5.8%	5.8%	6.1%	
SFY 2020	7/19 - 6/20	---	6.1%	6.3%	7.3%	7.5%	7.1%					
SFYs 2015-2020	7/14 - 6/20	1,496	5.9%	6.3%	6.7%	6.9%	6.6%	Data not available				

WISe Outcomes

JUNE 2021

Homelessness or Housing Instability

NORTH CENTRAL															
SFY 2015	7/14 - 6/15	0													
SFY 2016	7/15 - 6/16	--- ²	10.0%	10.0%	10.0%	10.0%	5.0%	5.0%	5.0%	5.0%	0.0%	5.0%			
SFY 2017	7/16 - 6/17	--- ²	0.0%	2.1%	4.2%	6.3%	4.2%	4.2%	6.3%	2.1%	4.2%	4.2%			
SFY 2018	7/17 - 6/18	--- ²	5.9%	3.7%	3.0%	3.7%	1.5%	4.4%	4.4%	5.2%	4.4%	7.4%			
SFY 2019	7/18 - 6/19	--- ²	3.4%	2.1%	4.8%	4.8%	4.1%	4.1%	4.1%	3.4%	2.1%				
SFY 2020	7/19 - 6/20	--- ²	7.9%	7.9%	9.6%	7.9%	4.4%								
SFYs 2015-2020	7/14 - 6/20	--- ²	5.2%	4.3%	5.6%	5.6%	3.5%								
							<i>Data not available</i>								
NORTH SOUND															
SFY 2015	7/14 - 6/15	--- ²	4.8%	5.4%	4.2%	7.2%	4.8%	4.8%	5.4%	4.2%	4.8%	3.6%			
SFY 2016	7/15 - 6/16	--- ²	6.5%	5.0%	4.5%	6.0%	6.0%	5.5%	7.0%	6.5%	7.0%	5.5%			
SFY 2017	7/16 - 6/17	--- ²	3.8%	3.0%	2.6%	3.8%	5.5%	5.1%	4.7%	4.3%	3.4%	3.8%			
SFY 2018	7/17 - 6/18	--- ²	4.7%	3.8%	4.2%	4.2%	3.4%	2.5%	3.4%	3.0%	3.0%	3.0%			
SFY 2019	7/18 - 6/19	--- ²	2.8%	2.8%	3.1%	3.6%	3.3%	4.6%	3.9%	4.9%	5.4%				
SFY 2020	7/19 - 6/20	--- ²	4.7%	3.8%	4.7%	4.1%	5.4%								
SFYs 2015-2020	7/14 - 6/20	1,669	4.4%	3.8%	3.9%	4.5%	4.7%								
							<i>Data not available</i>								
PIERCE															
SFY 2015	7/14 - 6/15	--- ²	3.5%	2.1%	3.5%	2.8%	2.8%	2.8%	2.8%	3.5%	4.9%	5.6%			
SFY 2016	7/15 - 6/16	--- ²	5.4%	3.8%	4.3%	2.7%	2.2%	3.2%	2.2%	3.8%	4.3%	4.3%			
SFY 2017	7/16 - 6/17	--- ²	6.4%	4.9%	4.5%	6.0%	5.6%	5.2%	6.4%	6.4%	6.4%	7.1%			
SFY 2018	7/17 - 6/18	--- ²	3.8%	4.7%	4.1%	3.8%	4.4%	3.5%	4.4%	5.0%	4.7%	6.3%			
SFY 2019	7/18 - 6/19	--- ²	5.6%	6.7%	5.3%	4.9%	6.0%	6.0%	5.6%	5.3%	6.0%				
SFY 2020	7/19 - 6/20	--- ²	7.6%	7.3%	6.5%	6.0%	5.1%								
SFYs 2015-2020	7/14 - 6/20	1,565	5.6%	5.4%	4.9%	4.7%	4.7%								
							<i>Data not available</i>								
SALISH															
SFY 2015	7/14 - 6/15	0													
SFY 2016	7/15 - 6/16	--- ²	0.0%	0.0%	0.0%	0.0%	0.0%	0.0%	0.0%	0.0%	0.0%	0.0%			
SFY 2017	7/16 - 6/17	--- ²	8.7%	8.7%	4.3%	10.9%	13.0%	8.7%	8.7%	8.7%	6.5%	4.3%			
SFY 2018	7/17 - 6/18	--- ²	4.3%	5.7%	5.0%	7.1%	7.9%	8.6%	7.1%	7.1%	6.4%	4.3%			
SFY 2019	7/18 - 6/19	--- ²	4.7%	4.7%	5.8%	7.9%	8.9%	7.9%	5.8%	5.3%	5.3%				
SFY 2020	7/19 - 6/20	--- ²	3.8%	4.2%	8.0%	11.3%	8.5%								
SFYs 2015-2020	7/14 - 6/20	--- ²	4.4%	4.9%	6.1%	8.9%	8.6%								
							<i>Data not available</i>								
SOUTHWEST															
SFY 2015	7/14 - 6/15	--- ²	3.9%	2.3%	3.1%	4.7%	3.9%	3.9%	6.2%	5.4%	6.2%	7.0%			
SFY 2016	7/15 - 6/16	--- ²	5.1%	5.8%	5.1%	4.4%	4.4%	5.8%	5.8%	5.1%	2.9%	3.6%			
SFY 2017	7/16 - 6/17	--- ²	5.6%	5.6%	6.3%	7.6%	4.9%	3.5%	3.5%	2.8%	0.7%	2.1%			
SFY 2018	7/17 - 6/18	--- ²	2.0%	1.4%	2.0%	2.7%	2.7%	1.4%	2.0%	4.1%	4.1%	4.8%			
SFY 2019	7/18 - 6/19	--- ²	3.9%	3.3%	3.9%	2.8%	3.9%	2.8%	2.2%	1.7%	2.8%				
SFY 2020	7/19 - 6/20	--- ²	9.8%	9.3%	8.3%	7.8%	6.2%								
SFYs 2015-2020	7/14 - 6/20	--- ²	5.3%	4.8%	4.9%	5.1%	4.4%								
							<i>Data not available</i>								

WISe Outcomes

JUNE 2021

Homelessness or Housing Instability

SPOKANE												
SFY 2015	7/14 - 6/15	--- ¹	0.0%	0.0%	0.0%	0.0%	0.0%	0.0%	20.0%	20.0%	20.0%	20.0%
SFY 2016	7/15 - 6/16	--- ²	0.0%	2.6%	0.0%	0.0%	0.0%	0.0%	5.3%	5.3%	5.3%	2.6%
SFY 2017	7/16 - 6/17	--- ²	2.7%	4.2%	3.8%	3.4%	3.4%	3.1%	5.4%	5.4%	5.4%	3.8%
SFY 2018	7/17 - 6/18	--- ²	8.4%	7.9%	6.1%	5.4%	4.8%	4.8%	6.9%	4.6%	3.6%	4.1%
SFY 2019	7/18 - 6/19	--- ²	4.8%	4.5%	5.1%	5.1%	5.3%	5.1%	7.0%	7.8%	7.0%	
SFY 2020	7/19 - 6/20	--- ²	4.3%	4.6%	3.5%	4.1%	3.5%					
SFYs 2015-2020	7/14 - 6/20	1,415	5.2%	5.4%	4.6%	4.5%	4.2%		<i>Data not available</i>			

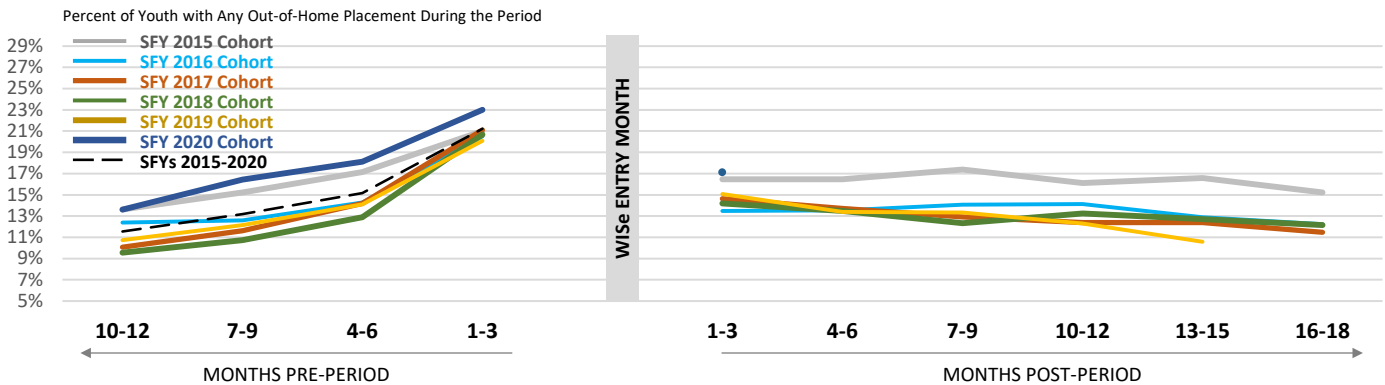
THURSTON-MASON												
SFY 2015	7/14 - 6/15	--- ²	7.1%	6.6%	5.3%	5.8%	6.2%	7.5%	5.8%	7.5%	9.7%	11.9%
SFY 2016	7/15 - 6/16	--- ²	2.8%	3.9%	4.5%	3.4%	5.6%	5.6%	5.0%	5.0%	5.6%	6.7%
SFY 2017	7/16 - 6/17	--- ²	5.9%	6.9%	6.9%	7.4%	8.4%	8.9%	7.4%	6.9%	6.9%	4.9%
SFY 2018	7/17 - 6/18	--- ²	7.8%	9.4%	10.4%	8.9%	9.9%	9.4%	8.3%	8.3%	7.3%	7.8%
SFY 2019	7/18 - 6/19	--- ²	6.9%	6.9%	6.2%	6.9%	5.4%	4.6%	6.9%	6.9%	5.4%	
SFY 2020	7/19 - 6/20	--- ²	8.4%	7.7%	8.1%	6.5%	5.8%					
SFYs 2015-2020	7/14 - 6/20	1,240	6.7%	7.0%	7.0%	6.5%	6.9%		<i>Data not available</i>			

Notes. ¹Primary suppression: To protect the privacy of individuals, cells in this data product that represent 10 or fewer persons are not displayed. ²Secondary suppression: Region-level numbers of youth in individual years are also suppressed because most could be used to recalculate suppressed values. Aggregate years are shown where possible at the region level.

WISe Outcomes

JUNE 2021

Any Out-of-Home Placement



Cohort	Entered WISe	N	MONTHS PRE-PERIOD				MONTHS POST PERIOD					
			10-12	7-9	4-6	1-3	1-3	4-6	7-9	10-12	13-15	16-18
WASHINGTON												
Percent of Youth with Any Out-of-Home Placement During the Period												
SFY 2015	7/14 - 6/15	881	13.6%	15.2%	17.1%	21.0%	16.5%	16.5%	17.4%	16.1%	16.6%	15.2%
SFY 2016	7/15 - 6/16	1,365	12.4%	12.6%	14.3%	20.5%	13.5%	13.6%	14.1%	14.1%	12.9%	12.2%
SFY 2017	7/16 - 6/17	1,867	10.1%	11.6%	14.2%	21.1%	14.6%	13.7%	12.9%	12.4%	12.4%	11.5%
SFY 2018	7/17 - 6/18	2,313	9.6%	10.7%	12.9%	20.7%	14.2%	13.5%	12.3%	13.2%	12.7%	12.1%
SFY 2019	7/18 - 6/19	2,694	10.7%	12.1%	14.1%	20.1%	15.1%	13.4%	13.3%	12.3%	10.6%	
SFY 2020	7/19 - 6/20	3,204	13.6%	16.4%	18.1%	23.0%	17.1%					
SFYs 2015-2020	7/14 - 6/20	12,324	11.5%	13.2%	15.2%	21.2%	15.3%					Data not available

REGIONS		Entered WISe										
GREAT RIVERS												
SFY 2015	7/14 - 6/15	---	4.3%	4.3%	0.0%	0.0%	8.7%	0.0%	0.0%	0.0%	13.0%	13.0%
SFY 2016	7/15 - 6/16	---	12.3%	6.2%	8.6%	12.3%	8.6%	11.1%	12.3%	12.3%	12.3%	9.9%
SFY 2017	7/16 - 6/17	---	6.9%	7.6%	15.3%	19.8%	17.6%	15.3%	16.8%	18.3%	18.3%	18.3%
SFY 2018	7/17 - 6/18	---	6.0%	7.5%	9.0%	14.9%	13.4%	14.9%	12.4%	13.9%	14.4%	14.9%
SFY 2019	7/18 - 6/19	---	10.3%	12.4%	14.5%	19.2%	16.7%	15.8%	15.8%	15.8%	15.0%	
SFY 2020	7/19 - 6/20	---	13.5%	19.0%	19.7%	20.8%	13.9%					
SFYs 2015-2020	7/14 - 6/20	944	9.9%	11.9%	14.1%	17.8%	14.4%					Data not available

GREATER COLUMBIA												
SFY 2015	7/14 - 6/15	---	12.1%	16.3%	18.4%	27.4%	17.9%	18.4%	19.5%	17.9%	18.4%	17.9%
SFY 2016	7/15 - 6/16	---	8.2%	8.2%	10.6%	20.5%	13.4%	12.3%	12.3%	14.4%	11.3%	10.6%
SFY 2017	7/16 - 6/17	---	8.3%	7.6%	9.8%	14.1%	11.3%	8.0%	8.9%	7.6%	5.5%	5.5%
SFY 2018	7/17 - 6/18	---	8.1%	9.5%	12.0%	16.8%	13.2%	11.8%	11.5%	12.3%	10.4%	9.5%
SFY 2019	7/18 - 6/19	---	7.8%	7.8%	9.3%	12.7%	8.8%	8.8%	8.8%	8.6%	6.1%	
SFY 2020	7/19 - 6/20	---	9.7%	11.4%	13.5%	16.8%	12.3%					
SFYs 2015-2020	7/14 - 6/20	1,996	8.8%	9.7%	11.8%	17.1%	12.3%					Data not available

KING COUNTY												
SFY 2015	7/14 - 6/15	0										
SFY 2016	7/15 - 6/16	---	16.7%	16.7%	16.7%	15.8%	14.0%	16.3%	17.7%	16.3%	16.3%	14.0%
SFY 2017	7/16 - 6/17	---	13.7%	16.1%	15.1%	24.9%	14.6%	14.1%	17.1%	14.6%	16.1%	14.6%
SFY 2018	7/17 - 6/18	---	14.9%	16.4%	21.5%	25.6%	22.1%	22.1%	19.5%	20.0%	23.1%	18.5%
SFY 2019	7/18 - 6/19	---	13.1%	13.9%	16.9%	21.1%	16.9%	16.4%	16.1%	15.3%	12.2%	
SFY 2020	7/19 - 6/20	---	15.9%	18.0%	17.9%	20.9%	16.7%					
SFYs 2015-2020	7/14 - 6/20	1,496	14.9%	16.4%	17.6%	21.4%	16.8%					Data not available

WISe Outcomes

JUNE 2021

Any Out-of-Home Placement

NORTH CENTRAL															
SFY 2015	7/14 - 6/15	0													
SFY 2016	7/15 - 6/16	--- ²	5.0%	5.0%	10.0%	5.0%	10.0%	10.0%	15.0%	20.0%	25.0%	25.0%			
SFY 2017	7/16 - 6/17	--- ²	14.6%	18.8%	16.7%	22.9%	14.6%	20.8%	16.7%	16.7%	18.8%	20.8%			
SFY 2018	7/17 - 6/18	--- ²	11.1%	8.9%	8.1%	14.1%	9.6%	11.1%	14.1%	13.3%	12.6%	13.3%			
SFY 2019	7/18 - 6/19	--- ²	13.8%	11.0%	11.7%	23.4%	18.6%	17.9%	15.2%	13.8%	12.4%				
SFY 2020	7/19 - 6/20	--- ²	18.4%	23.7%	25.4%	31.6%	24.6%								
SFYs 2015-2020	7/14 - 6/20	--- ²	13.9%	14.1%	14.5%	21.9%	16.7%								<i>Data not available</i>
NORTH SOUND															
SFY 2015	7/14 - 6/15	--- ²	17.5%	19.3%	18.7%	21.7%	17.5%	15.7%	16.3%	15.1%	15.7%	15.7%			
SFY 2016	7/15 - 6/16	--- ²	16.5%	17.0%	20.5%	28.0%	17.5%	16.5%	17.5%	15.0%	16.0%	15.0%			
SFY 2017	7/16 - 6/17	--- ²	12.3%	15.7%	19.1%	23.4%	16.6%	12.8%	12.3%	11.5%	12.3%	10.6%			
SFY 2018	7/17 - 6/18	--- ²	15.7%	18.6%	19.9%	26.3%	13.1%	13.1%	11.9%	12.7%	11.0%	12.3%			
SFY 2019	7/18 - 6/19	--- ²	11.3%	14.1%	17.5%	21.9%	13.6%	12.3%	12.1%	10.0%	9.5%				
SFY 2020	7/19 - 6/20	--- ²	12.2%	17.6%	21.2%	24.6%	17.4%								
SFYs 2015-2020	7/14 - 6/20	1,669	13.5%	16.8%	19.5%	24.1%	15.8%								<i>Data not available</i>
PIERCE															
SFY 2015	7/14 - 6/15	--- ²	13.4%	13.4%	15.5%	19.0%	11.3%	13.4%	13.4%	13.4%	12.7%	10.6%			
SFY 2016	7/15 - 6/16	--- ²	10.8%	11.4%	12.4%	23.8%	14.6%	15.7%	15.7%	16.2%	12.4%	12.4%			
SFY 2017	7/16 - 6/17	--- ²	9.7%	11.2%	14.6%	20.6%	15.0%	17.2%	13.1%	14.2%	13.1%	12.7%			
SFY 2018	7/17 - 6/18	--- ²	8.2%	8.8%	10.7%	20.1%	11.9%	9.7%	9.7%	12.3%	9.7%	7.2%			
SFY 2019	7/18 - 6/19	--- ²	10.9%	10.6%	12.7%	19.7%	15.8%	14.1%	15.1%	12.3%	12.3%				
SFY 2020	7/19 - 6/20	--- ²	18.2%	21.1%	22.5%	29.8%	23.0%								
SFYs 2015-2020	7/14 - 6/20	1,565	12.1%	13.2%	15.1%	22.7%	16.0%								<i>Data not available</i>
SALISH															
SFY 2015	7/14 - 6/15	0													
SFY 2016	7/15 - 6/16	--- ²	5.6%	22.2%	5.6%	22.2%	0.0%	0.0%	11.1%	5.6%	5.6%	5.6%			
SFY 2017	7/16 - 6/17	--- ²	13.0%	17.4%	17.4%	32.6%	17.4%	21.7%	17.4%	8.7%	10.9%	10.9%			
SFY 2018	7/17 - 6/18	--- ²	5.7%	5.7%	7.9%	17.1%	10.7%	9.3%	7.1%	10.0%	11.4%	10.0%			
SFY 2019	7/18 - 6/19	--- ²	8.9%	10.0%	11.6%	18.4%	20.5%	16.8%	16.3%	15.3%	12.1%				
SFY 2020	7/19 - 6/20	--- ²	17.4%	19.7%	19.2%	26.3%	24.9%								
SFYs 2015-2020	7/14 - 6/20	--- ²	11.4%	13.3%	13.7%	22.1%	18.9%								<i>Data not available</i>
SOUTHWEST															
SFY 2015	7/14 - 6/15	--- ²	16.3%	15.5%	20.2%	25.6%	26.4%	24.8%	24.0%	24.0%	26.4%	21.7%			
SFY 2016	7/15 - 6/16	--- ²	8.0%	10.9%	9.5%	19.7%	14.6%	14.6%	12.4%	13.9%	12.4%	12.4%			
SFY 2017	7/16 - 6/17	--- ²	7.6%	7.6%	7.6%	11.1%	12.5%	13.2%	12.5%	10.4%	13.2%	11.8%			
SFY 2018	7/17 - 6/18	--- ²	4.1%	5.4%	8.8%	19.7%	13.6%	12.9%	10.9%	13.6%	10.9%	12.2%			
SFY 2019	7/18 - 6/19	--- ²	5.6%	6.7%	11.1%	16.7%	11.7%	10.6%	9.4%	8.3%	8.9%				
SFY 2020	7/19 - 6/20	--- ²	13.5%	11.9%	17.1%	22.3%	18.1%								
SFYs 2015-2020	7/14 - 6/20	--- ²	9.1%	9.6%	12.5%	19.1%	15.9%								<i>Data not available</i>

WISe Outcomes

JUNE 2021

Any Out-of-Home Placement

SPOKANE												
SFY 2015	7/14 - 6/15	--- ¹	20.0%	40.0%	60.0%	40.0%	40.0%	40.0%	40.0%	40.0%	0.0%	
SFY 2016	7/15 - 6/16	--- ²	42.1%	34.2%	47.4%	57.9%	23.7%	13.2%	18.4%	13.2%	18.4%	
SFY 2017	7/16 - 6/17	--- ²	10.0%	12.3%	17.6%	32.6%	18.0%	16.9%	14.9%	14.9%	13.4%	
SFY 2018	7/17 - 6/18	--- ²	8.2%	9.2%	13.0%	25.5%	17.3%	15.6%	13.0%	14.0%	13.5%	
SFY 2019	7/18 - 6/19	--- ²	12.0%	16.3%	16.6%	26.7%	17.4%	12.6%	13.1%	13.6%	10.4%	
SFY 2020	7/19 - 6/20	--- ²	12.8%	15.1%	16.8%	26.7%	15.7%	Data not available				
SFYs 2015-2020	7/14 - 6/20	1,415	11.6%	13.9%	16.8%	28.3%	17.3%					
THURSTON-MASON												
SFY 2015	7/14 - 6/15	--- ²	11.5%	12.8%	15.0%	15.5%	12.4%	13.7%	16.4%	13.7%	12.4%	
SFY 2016	7/15 - 6/16	--- ²	9.5%	10.6%	12.8%	12.3%	8.4%	8.9%	8.4%	9.5%	7.3%	
SFY 2017	7/16 - 6/17	--- ²	9.4%	10.8%	12.3%	16.7%	11.8%	10.8%	8.9%	10.3%	11.8%	
SFY 2018	7/17 - 6/18	--- ²	14.1%	16.1%	14.6%	20.8%	13.5%	14.1%	13.5%	9.9%	12.5%	
SFY 2019	7/18 - 6/19	--- ²	14.6%	17.7%	16.9%	21.5%	15.4%	13.1%	14.6%	11.5%	10.0%	
SFY 2020	7/19 - 6/20	--- ²	8.4%	10.6%	12.3%	17.4%	12.6%	Data not available				
SFYs 2015-2020	7/14 - 6/20	1,240	10.8%	12.7%	13.7%	17.2%	12.3%					

Notes. ¹Primary suppression: To protect the privacy of individuals, cells in this data product that represent 10 or fewer persons are not displayed. ²Secondary suppression: Region-level numbers of youth in individual years are also suppressed because most could be used to recalculate suppressed values. Aggregate years are shown where possible at the region level.