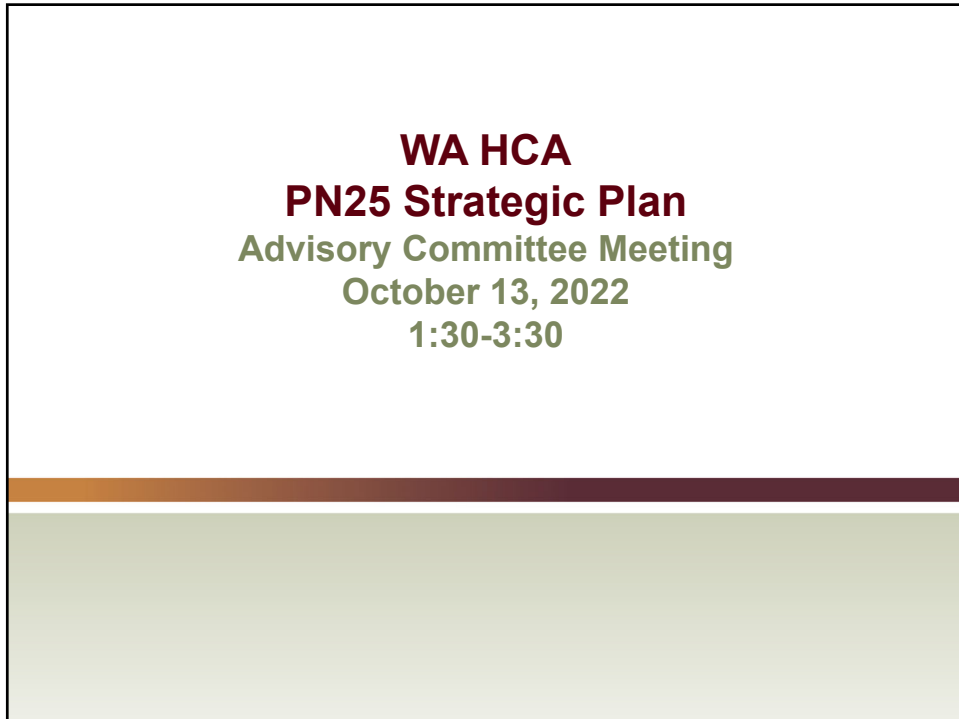




1



2

Agenda

- 1:30 Welcome and Introductions
(CYBHWG Co-Chairs)
- 2:00 Update on Stipends (Nate Lewis)
- 2:10 Meeting norms and process (KAI)
- 2:30 Update on Advisory Committee Structure
(CYBHWG Co-Chairs)
- 3:00 Public Comments



Introductions



Updates on Stipends

For young people and family members!

We are excited to tell you that starting October 3 we will be able to offer payment (called stipends) of \$45/hr to people joining this meeting who:

- are not being paid by their employer for participating in this committee
- are attending because of their own, or their family member's, lived experience with the behavioral health system

We are also able to reimburse you for child or elder care, if needed.

Please email cybhwg@hca.wa.gov or send a message in Chat to Nate Lewis or Rachel Burke if you believe you are eligible.



Kauffman & Associates
INCORPORATED

KAI Confidential

5

Break-out Group Conversation: Meeting Norms and Process

Discussion Topics:

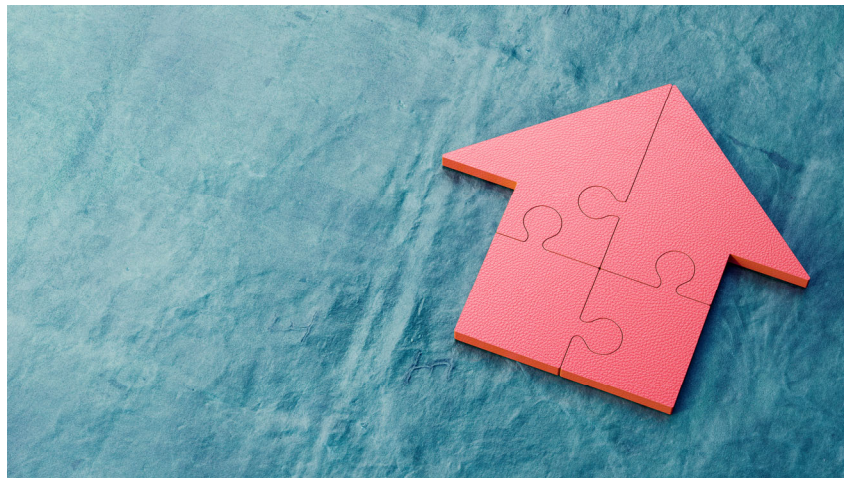
1. What do we want the advisory group to look like and feel like?
2. What is important in terms of how we conduct business in this advisory group?
3. What will be the process for decision making?



Kauffman & Associates
INCORPORATED

6

Update on Advisory Committee Structure



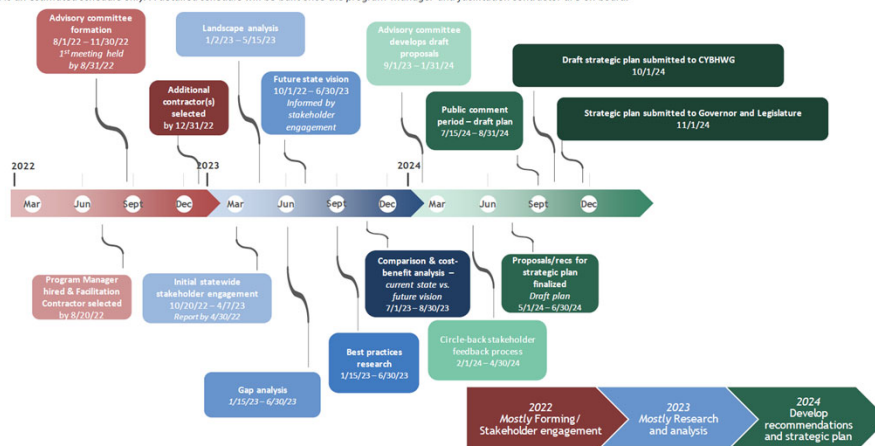
Kauffman & Associates
INCORPORATED

KAI Confidential

7

Prenatal to 25 Behavioral Health Strategic Plan - Preliminary Schedule (draft)

This is an estimated schedule only. A detailed schedule will be built once the program manager and facilitation contractor are on board.



Kauffman & Associates
INCORPORATED

8

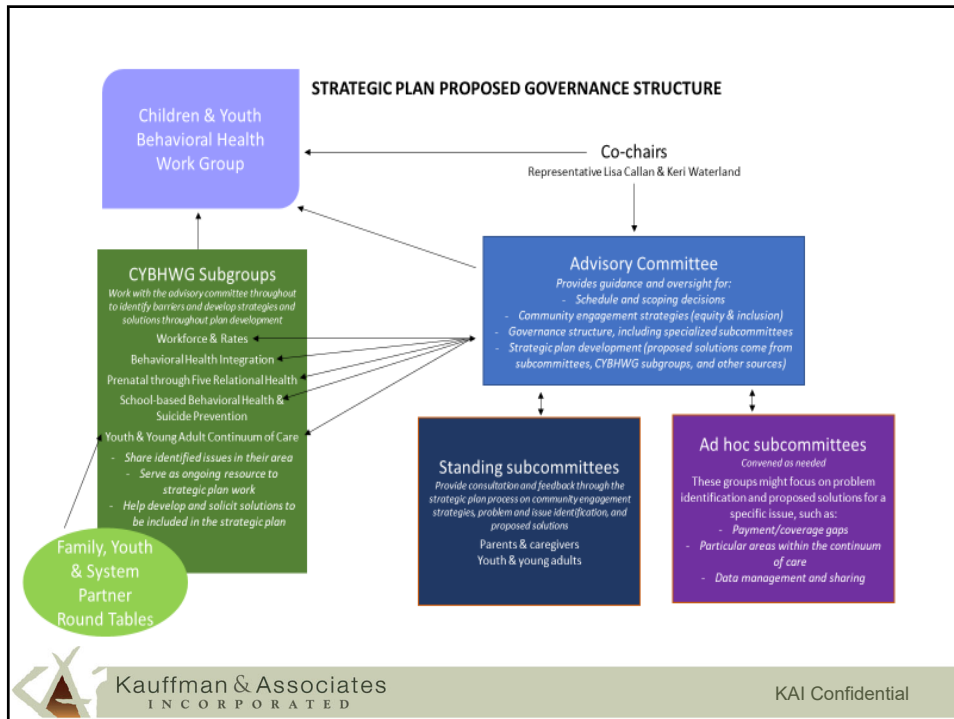
Purpose of the Advisory Committee

Develop a draft strategic plan that describes:

1. The current landscape of behavioral health services
2. The vision for the behavioral health service delivery system
3. A comparison of the current behavioral health system for families and the new vision through a cost-benefit analysis



Kauffman & Associates
INCORPORATED



Kauffman & Associates
INCORPORATED

KAI Confidential

Strategic Plan Advisory Workgroup Membership

Shall include at a minimum:

1. Community members with lived experience including those with cultural, linguistic, and ethnic diversity as well as thought having diverse experience with behavioral health care.
2. DCYF
3. DOH
4. HCA
5. Office of Homeless Youth Prevention and Protection Programs
6. Office of the Governor
7. Developmental Disabilities Administration
8. Office of the Superintendent of Public Instruction
9. Office of the Insurance Commissioner
10. A Tribal Representative
11. Two legislative members or alternates from the CYBHWG
12. Individuals with subject matter expertise



Kauffman & Associates
INCORPORATED

KAI Confidential

11

Public Comments



Kauffman & Associates
INCORPORATED

KAI Confidential

12

Future Advisory Committee Meetings

November 18, 2-5 p.m.

- Provide feedback on draft Committee charter

December 5, 9-12 p.m.

- New members will participate
- Approve Charter



Kauffman & Associates
INCORPORATED

13



14