

Provider & network needs in response to youth SUD residential closures

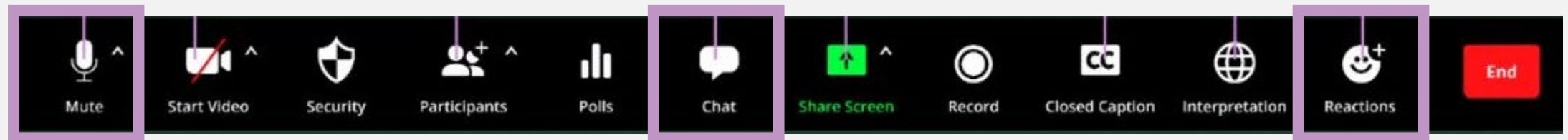
Informational session, August 8

Before we begin

- This meeting is being recorded.
- The meeting may be shared on HCA's webpage.
- This recording is open to public disclosure.
- Please do not disclose any private or confidential information.

Before we begin

- Please mute yourself if you are not speaking
- Open discussion - enter questions/feedback into the chat or raise your hand
- If we cannot answer your question on this call, we will follow-up after the meeting.
- This time is for you. We welcome the discussion.



Presenters



Diana Cockrell
(she/her)

Section Manager,
Division Behavioral
Health and Recovery



Amanda Lewis
(she/her)

Youth Substance Use
Disorder, Co-occurring
treatment lead



Objective

- ▶ **Provider perspectives:** Hear from outpatient SUD and mental health providers and other key referral partners who are experiencing difficulties finding appropriate levels of care for youth and young adults.
- ▶ **Conversation:** Discussion between key referral partners and funders responsible for ensuring access to services that support health and wellbeing.
- ▶ **Education:** Learn about programs that are being implemented in various regions to support families and provider.

Session one themes



Immediate (next 3 months)

- Communications re: services and supports
- Withdrawal Management (detox)
- Service expansion including co-occurring treatment
- Financial assistance



Intermediate (3-24 months)

- Data
- Staffing and workforce
- Training, education
- Service need, accessibility



Long-term (2+ years)

- Reimbursement rates, financial support

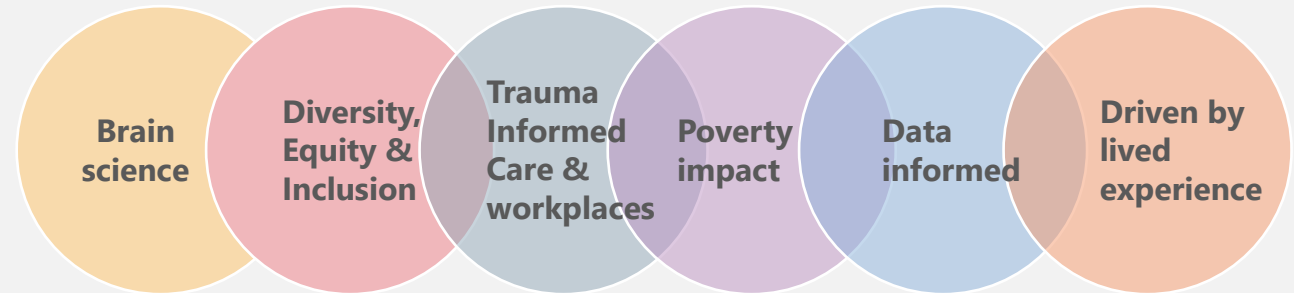
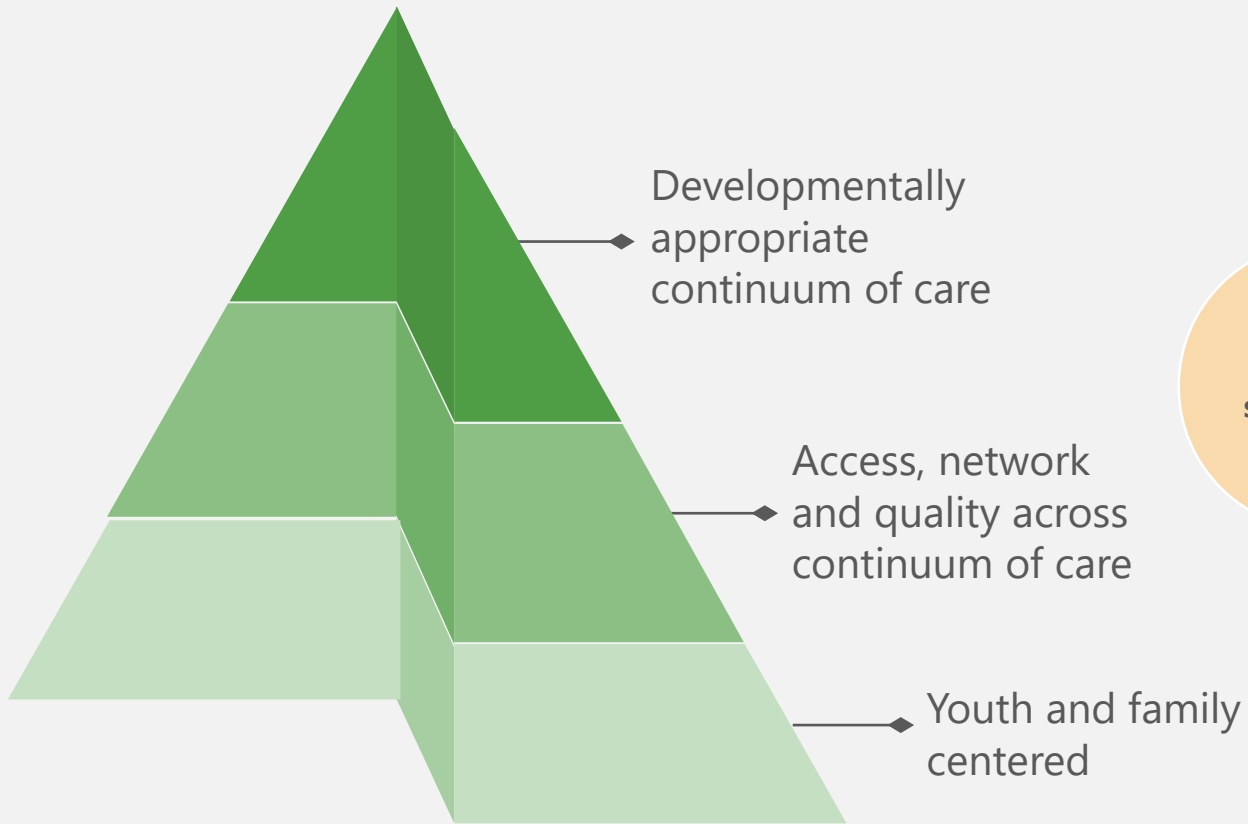
Session two themes

Strong cross-system collaboration | System partners supporting provider need



- Synced cross-agency communication and messaging (i.e. DOH, HCA)
- Continued workforce building
- Community relationships
- Service availability and expansion
- Accessibility

Youth, young adult behavioral health care



Recommendations for system improvements

Continuum of care

Withdrawal management, crisis stabilization ★

Statewide SUD, co-occurring (COD) outpatient ★

COD residential treatment ★

Accessibility

Assess access and referral pathways 🔄

Full continuum of care ✓★

Funding and resources

Reimbursement rates ✓★

Workforce pay ✓★

Paid internship opportunities ✓★

Strengthen communication & messaging

Synced cross-agency messaging (i.e. DOH, HCA) 🔄

Services and supports in real time ★

Continued workforce building

Credentialing and licensing process 🔄

Co-occurring clinicians 🔄

Mentorship 🔄

Training & education 🔄

Community, partner relationships

Continuum of care networking, pathway to elevate needs ★✓

Immediate (next 3 months): ★

Intermediate (3-24 months): 🔄

Long-term (2+ years): ✓

Collective
steps
forward



CYBHWG behavioral health
strategic plan subgroup



What are we not asking?



How to best showcase need?

Resources

Center of Parent Excellence project (COPE)

Provides a pathway for parents who are accessing and navigating the children's behavioral health system to have peer support.



Youth Behavioral Health Navigators

Regional teams who build community and gathering specific supports for children, youth, young adults, and families in their region.



Mobile Response & Stabilization Services (MRSS)

A rapid response, home and community-based crisis intervention and stabilization model customized to meet the developmental needs of children, youth, young adults, and their families.



Medication for Opioid Use Disorder (MOUD) locator

An online locator that provides MOUD services by medication type and location.



Washington Recovery Help Line

Is an anonymous and confidential help line that provides crisis intervention and referral services for Washington State residents.



Washington State Community Connectors (WSCC)

A community of support for caregivers of children with a range of behavioral health needs, including mental health and substance use.



Next steps
